



LE MARTRES
BEEF

"Get With The Strength"

2021 Annual Bull Sale



Stud Sire - Le Martres Gladstone (G133) (Poll)

Friday March 5th, 2021

**On Property "Rosemont Farm",
136 Rosemont Road, Table Top, NSW, Australia**



www.lemartreslimousins.com



LE MARTRES

BEEF

NEWS UPDATE

Le Martres Stud Herd Achieves Long Held Goals -

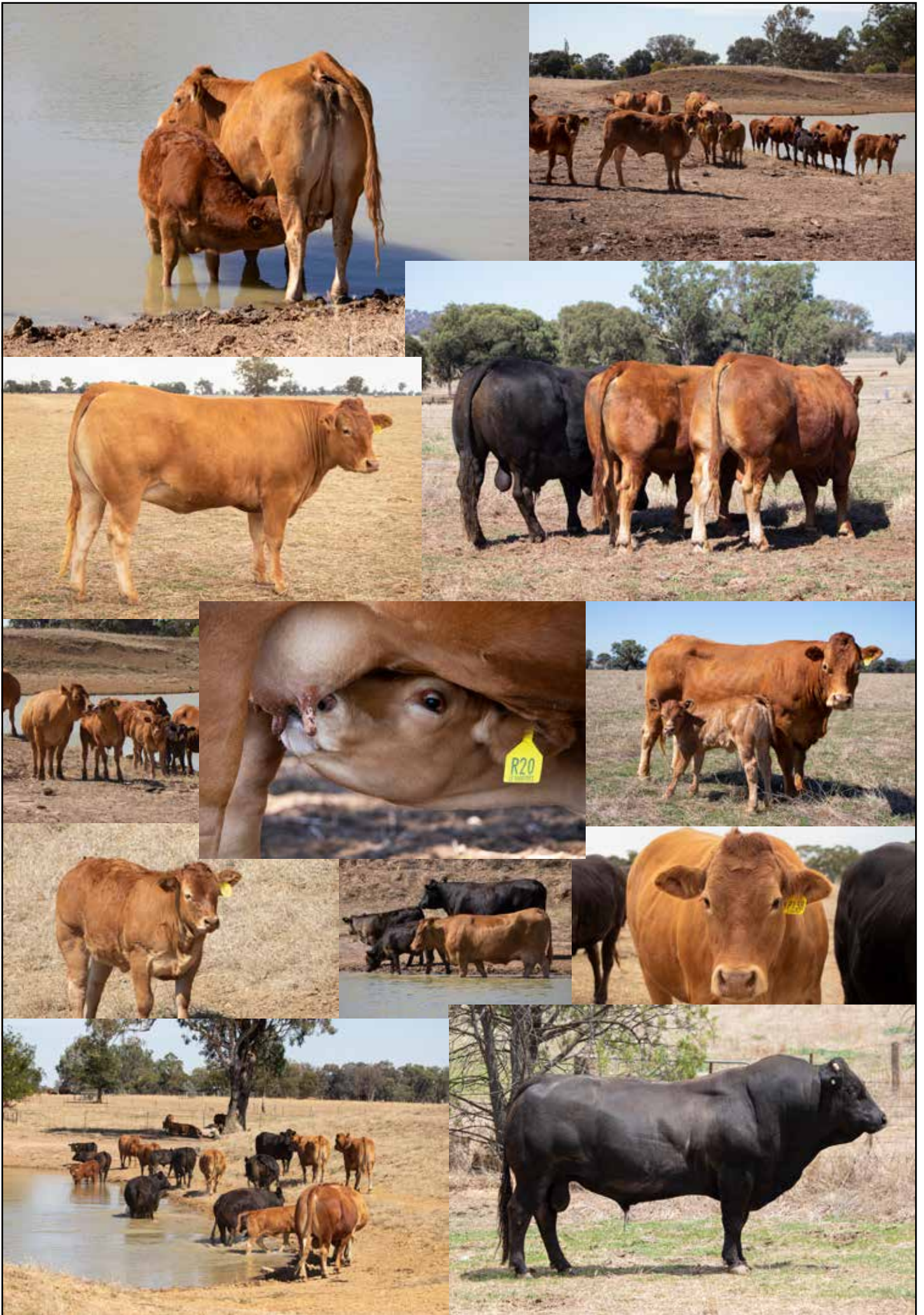
At 'Rosemont Farm', home to the Le Martres Limousin Stud Herd, the last 2 years of drought conditions have been very trying. Despite these conditions, during 2020 the herd reached the long held goals of owning 200 Stud Cows and breeding 50 Saleable bulls. During times when many herds were forced to scale back, the implementation of strategic measures resulted in the firming up of future fodder production and the permanent grazing of heifers, allowed the Herd asset to be both grown and maintained.

In addition, the Le Martres herd has reached the milestone of 33 years of breeding. Our cattle have been bred, originally using a selection of French A.I. sires selected as having the shortest Gestation Period, to ensure European cattle could readily be bred with both British & Tropical cattle. Hence the Le Martres herd has a good reputation for calf size and reliable calving - hugely important traits to commercial cattle people.

Le Martres cattle have been purpose bred to have –

- 4-6 Great Cow Families in each pedigree, ensuring the cattle are strong/dominate Breeders.
- Early puberty traits, leading to reliable & annual calving.
- Longevity, for maximum profitability.
- Large testicles.
- Sound udders and teat shape & length, combined with excellent milking ability.
- Exceptional Carcase traits, especially Fat Cover & Marbling.
- Well developed stomachs for versatile performance in both grassland & feed-lot environments.
- Polled heads
- Good Manners.....







LE MARTRES
BEEF

12th Annual Bull Sale

50 Apricot, Black, Blue & Strawberry Limousin
(Mature & Yearling) Sires – with “Big Butts”

Friday March 5th, 2021

**On Property - “Rosemont Farm”, 136 Rosemont Road,
Table Top, NSW**

**Inspections commence at 11 am
Helmsman Sale commences at 1 pm
with phone bidding available.**

**Location:
Directions:**

136 Rosemont Road, Table Top, via Albury, NSW, Australia
Coming from Albury, 18 kms, turn off the Hume Freeway onto the
Olympic Hwy, then just 2 kms north on the Olympic Hwy turn left
into Rosemont Road.

Le Martres Beef Team:

Leon Martin
0428 577 138

Ron Leary
0417 506 745

Nikita Grant
0449 922 039

Aaron Grant
0484 060 741

Morning Tea and Luncheon provided at ‘Rosemont Farm’

Agent: Michael Glasser of GTSM - 0403 526 702





LE MARTRES

BEEF

PAST STUD SIRES



Le Martres Chad (C90) - French Pure



Le Martres Darby (D58) - French Pure



Le Martres Black Drake (D89) - Aust. Pure, Black & Polled



Le Martres Black Declan (D41) - Aust. Pure, Black & Polled



LE MARTRES

BEEF

PAST STUD SIRES



Le Martres Black Edbert (E24) - Aust. Pure, Black & Polled



Le Martres Edwin (E42) - Aust. Pure & Polled



**Le Martres Eleazor (E57) -
French Pure**



Limoges El Bulli (E16) - Aust. Pure, Black & Polled



Limoges Esument (E22) - Aust. Pure & Polled



LE MARTRES

BEEF

CURRENT STUD SIRES



Le Martres Black Fagan (F88) - Grade 1 Pure, Black & Polled



Le Martres Governor (G70) - Aust. Pure & Polled



**Le Martres Gladstone (G133)
- Aust. Pure & Polled**



Le Martres Hambleton (H59) - Aust. Pure & Polled



**Le Martres Black Herald (H87) - Aust. Pure, Black &
Scurred**



LE MARTRES

BEEF

CURRENT STUD SIRES



Le Martres Black Jacob (J72) - Aust. Pure, Black & Scurred



Le Martres Blue Kaleb (K121) - Grade 2 Pure, Blue & Polled



Le Martres Latimer (L96) - Aust. Pure & Polled



Le Martres Black Leonardo (L106) - Aust Pure, Black & Scurred



LE MARTRES

BEEF

CURRENT STUD SIRES



Le Martres Black Mead (M100) - Aust. Pure, Black & Polled



Le Martres Maestro (M150) - French Pure & Polled



Le Martres Black Nero (N16) - Aust. Pure, Black & Dehorned



Le Martres Blue Prince Michael (P183) - Grade 3 Pure, Blue & Polled



LE MARTRES

BEEF

PAST STUD DAMS



Le Martres Zille LEMFZ43



Le Martres Anabel LEMPA63



Le Martres Celest LEMPC55



LE MARTRES

BEEF

CURRENT STUD DAMS



**Kandou Zoe GCBPZ07
(Poll)**



**Benamitchy Lorinda
BAMPA12**



**Le Martres Delight
LEMFD77**



**Le Martres Fifi LEMPF57
(Poll)**



**Le Martres Justine
LEMFJ108**



**Le Martres Levina
LEMPL54 (Poll)**



**Le Martres Mae
LEMPM166 (Poll)**



LE MARTRES

BEEF

CURRENT STUD DAMS



Le Martres Black Danica LEMPD35 (Poll)



Le Martres Black Gazelle LEMPG90 (Poll)



Le Martres Black Jaspa LEMPJ69 (Poll)



Le Matres Black Kaarina LEMPK98 (Poll)



Le Martres Black Kyla LEMPK36 (Poll)



LE MARTRES

BEEF

CURRENT STUD DAMS



Le Martres Blue Horizon LEM1H17 (Poll)



Le Martres Blue Nightingale LEM2N18 (Poll)



Le Martres Blue Petra LEM1N168



Le Martres Blue Lavender LEM1N169 (Poll)



LE MARTRES BEEF

Dear Fellow Beef Producers

Welcome to our twelfth Le Martres Beef Annual Bull Sale.

We proudly offer you another industry focused set of bulls with a selection of both mature & yearling bulls. And, for the first time, French Poll and Strawberry Poll bulls.

Established in 1988, Le Martres Beef proudly breeds Limousin cattle with optimal growth and exceptional quality carcasses, a range of coat colors (apricot, black, blue & strawberry) and an increasing selection of which are polled or double polled.

Our Limousin cattle are bred to perform in Australian conditions for your benefit. "Le Martres Beef cattle work for you". Leon Martin

The stud has a within herd genetic selection program based on 23 years of adopting the Livestock Assessment services of the 'Natural Ecosystems Group' (NEG) of Albury, NSW. This service utilises objective measurement - weighing, live scanning and indexing technology to identify cattle of superior 'meat yield and quality'.

The many benefits are,

- higher carcase yields
- better balanced carcasses, ie. ideal meat/fat/bone ratios
- greater carcase uniformity across progeny.
- higher value heifer progeny
- higher meat content (> 60% dressing percentage)
- higher 'Carcase Merit Index' post weaning for high meat performance (NEG; CMI >2000 @ 12 months, or NEG; CMI/mth > 166.67)
- adequate fat cover(>4 mm & < 10 mm) for softness and ease of finishing
- higher marbling (> 2.0% IMF) for meat quality.

Young herd sires are selected from within the herd on the basis of,

- born early & relatively small (ensuring shorter gestation & small birth size)
- high 'Carcase Merit Index' post weaning
- bred from superior milk performance dams
- structurally correct
- carrying large testicles well suspended away from the body.

We continue to place great emphasis on cow families and, sons bred from these families.

Again, as we move amongst our clients, we encourage them to retain the F1 & F2 heifers from their commercial herds and, breeding on with these cattle. Also, our Le Martres genetics are proving ideal for both grassland &/or feed-lot finishing, especially as domestic trade orders. And, increasingly our cattle are successfully meeting the challenges set for larger Steers &/or Bullocks.

We remain dedicated to objectively improving the meat yield & quality of our cattle for your benefit.

Breed with Le Martres and, Bank the benefits".

Yours in Limousin,

The Le Martres Beef Team.



Leon Martin

Ron Leary

SALE INFORMATION

The 'Selling System'

On Property - The Helmsman Sale will be conducted in the 'Woolshed' which is located in close proximity to the stockyards. Mr Michael Glasser of 'GTSM' will conduct the sale. There will be no sale ring, or selling of the bulls through a sale ring.

Buyers Orders And Phone Link Up

Mobile phones operate successfully at the Woolshed (venue). We encourage potential buyers who are unable to attend the sale to make arrangements with the vendor or the listed Sale Agents during the sale to place bids. Please make arrangements at least 48 hours prior to the Sale Day.

Inspection

Bulls can be inspected prior to the sale by arrangement with the vendor or Selling Agents. This gives us the opportunity to assist in selection of the most suitable genetics for your requirements.

Guarantee

Bulls - We guarantee to ensure all clients achieve one crop of calves from each bull purchased. The bulls have been selected for structural soundness. The bulls have been raised on a grass fed system which has proven successful over time to ensure our bulls/females are fertile. In the event of infertility, we (the vendor) guarantee (without expenses, interest, costs and damages) if any bull proves to be totally infertile or totally incapable of natural service, provided it is not caused by an injury or disease contracted since leaving the sale, to replace the bull with a bull of comparable value. Any claim for a bull must be lodged within 6 months of the date of the Sale direct with the vendor, and be accompanied with a relevant Veterinary Certificate. A claim will be considered on its merits by us (the vendor) and our Veterinarian.

Health

TB and Brucellosis free herd and stock are free to move anywhere in Australia. JD status is JBas 6. The bulls have been vaccinated previously with Vaxall 5 in 1 and Pestigard.

Tattoos

The bulls have an industry tattoo denoting the purity of '1', '2' or '3'. In explanation, the Le Martres Beef Breeding Program selects young Herd Sires to introduce the traits of black coat color and polledness into the herd. Many of these sale bulls are of higher purity than these tattoos denote.

Objective Measurement

The bulls were weighed, carcass scanned and indexed in December 2020. This practice is meaningful by providing the buyer with information of the body type of the calves these bulls are likely to produce when their calves are of a similar age. Over time, this approach has proven to be reliable and, very well received by our clients. This information is provided in the catalogue for your reference.

The bulls will be weighed again just prior to the Sale and, have a scrotal measurement taken, and this information will be provided in a supplementary sheet.

Semen Collection

Each bull is being sold with 100% possession, marketing and ownership. Le Martres Beef is reserving the right, if desired in the future, to collect semen from any bull. All costs associated with the collection of semen will be met by Le Martres Beef, and collection would be done at a time suitable to the purchaser. The purchaser will have total control of the bull, including any marketing of the physical bull or semen. The purchaser will have total control of the bull, including any marketing of the physical bull or semen.

Notice to all Buyers

Pre On Line Registration

1. All Buyers must pre register with GTSM.

Invoicing

1. GTSM will invoice successful Purchasers at the completion of the Sale.

Sale Rebates

1. All Buyers who settle their purchases on the day by cheque/credit card will receive a 2% rebate.

Delivery

1. Cattle will only be released after financial settlement has been completed with GTSM.

Notice to all Agents

Pre On Line Registration

1. Agents can go online at www.gtsm.net.au and introduce their Buyers before the sale.

Sale Rebates

1. All Agents whom fully complete & sign the Registration Form and settle on their clients behalf within the terms offered in the invoice will receive a 5% rebate on any of their clients purchases.
2. All Agents settling only on their clients behalf only will receive a 1% rebate on any of their clients purchases.

Personal Transport To And From The Property

Inspections by appointment - transport from Albury to and from the property can be arranged. Please contact the Agents of the Martin Family to make any such arrangements.

Air Facilities

Good airport facilities are available at Albury and Wagga Wagga. And private planes may also use Holbrook.

Accommodation

We recommend you contact the Motel direct:

Thurgoona Country Club Resort

1 Evesham Place,
THURGOONA
Ph: (02) 60431666

Insurance

We recommend you insure your purchases. All care will be taken to the conclusion of the sale but thereafter it is the purchaser's responsibility for any injury or death. We recommend you insure all purchases on the day with GTSM, and insure for at least the first 12 month period.

Livestock Delivery

Joe Wilton is the vendor's nominated carrier. Joe will help co-ordinate all transport arrangements for your new purchasers with Agents GTSM. Joe Wilton - 0408 739 559.

Important Notices

1. The vendor will not be responsible for any errors or omissions in this catalogue.
2. The Selling Agent, its members, subsidiary or related corporations, officers, agents and employees for themselves and for those for whom they act while exercising due care provide all information without responsibility and give no guarantee whatsoever as to its accuracy. All persons who attend the sale do so entirely at their own risk and the Selling Agent, its members, subsidiary or related corporations, officers, agents and employees and its principals, for themselves and for those for whom they act, do not assume or accept any responsibility or liability of whatever nature for any injury or damage whatsoever which may occur.



LE MARTRES BEEF

Le Martres Beef is known for adopting objective measurement to improve the carcass yield and quality.

This process is reaping financial rewards for their clients and the greater Beef Industry.

A 'weigh & Scan' operation was conducted on the 30.12.20 on the 2019 Spring drop of yearling sires, which appear in the 2021 Bull Sale. The assessment provided the following results and, a comparison with the previous 2018 drop showed the following trends –

<u>Trait:</u>	<u>2019 Bulls Av. Result:</u>	<u>Comparison With 2018 Bulls:</u>
* Age	15.7 months	-6%
* Live Weight	569 kg	-0.5%
* Rib Fat	5.3 mm	-10%
* Rump Fat	5.6 mm	-5%
* Marbling/IMF	3.3 %	+3%
* EMA (Eye Muscle Area)	111.13 cm ²	-5%
* NEG; Carcass Merit Index	2930.7 (Super Elite)	-1%
* NEG; CMI/Age	186.3	+0.2%

The 2019 cattle were slightly younger when assessed, and accordingly have recorded lower gains for a range of traits. Interestingly, they have recorded a higher gain for Marbling/IMF (%), which is a very positive trend.

These results confirm the consolidation of the positive trait changes achieved over recent years. In itself, a most positive result.

Le Martres genetic selection program continues to produce cattle with above average performance and, an extremely desirable set of carcass traits.

EXPLANATORY NOTES FOR CATALOGUE

LWT:

Live weight is measured by weighing the live animal. Results are measured in kilograms.

RIB & RUMP FAT:

Fat Depths are measured by carcass scanning of the live animal. Fat depths are measured on both the 12/13th Rib and P8;Rump sites, and measured in millimetres.

Measures of >3mm and <10mm will be ideal results for Domestic Trade cattle.

EMA:

Eye Muscle Areas are measured by carcass scanning of the live animal. Such areas are measured on the 12/13th Rib site, and measured in square centimetres.

Eye Muscle Areas(EMAs) greater than 100 cm sq. for either sex and all ages of cattle, excluding cattle under 6 months, will be a very good result.

IMF:

Intramuscular Fat is measured by carcass scanning of the live animal. IMF is measured on the 12/13th Rib site, and measures the percentage of fat distributed through-out the eye muscle.

Intramuscular Fat(IMF) measures of >2% will be ideal result for Domestic Trade cattle.

NEG; CMI:

The 'Natural Ecosystem Group (NEG); Carcase Merit Index' (CMI) is based upon the Live Weight(LW), Eye Muscle Area(EMA), Fat Depths(FD) and Intramuscular Fat(IMF) of the animals weighed & scanned.

Animals with heavy LW, large EMA, least FD and high IMF are rated highest by the 'NEG; CMI'.

The results are presented in groupings by age, and ranked from highest to lowest.

N.B It will be recommended animals under the age of 24 months be divided into groups with up to a three month spread of age for the purpose of peer group comparisons.

NEG; CMI/AGE:

The 'Natural Ecosystem Group (NEG); Carcase Merit Index' (CMI)/month is a powerful tool for assessing the performance of a live animal, ie. carcass merit relative to age. And, likewise when comparing a live animal against its peers.

EXPLANATION OF THE SUFFIXES TO ANIMAL NAMES IN THIS CATALOGUE

Horn Status:	(HP*)	Homozygous Polled by DNA test
	(HP)	Homozygous Polled by progeny test
	(2P)	Homozygous Polled by pedigree
	(P)	Polled
	(S)	Scurred
Colour:	(HB)	Homozygous Black by DNA test
	(2B)	Homozygous Black by pedigree
	(B)	Black
	(R)	Red (not Apricot)
Protoporphyrin Status:	(PN)	Proto Normal
	(PF)	Proto free by pedigree
	(PC)	The animal is a carrier of the abnormal gene for Proto.
	(PS)	Proto suspect (parent of carrier animal)
	(PU)	The animal has not been tested for Proto or have parents which have been tested normal or are free by pedigree.

EXPLANATORY NOTES FOR CATALOGUE

F94L – The Limousin Muscle Gene

What are the effects of the Limousin Muscling Gene?

The research conducted by the Adelaide University group led by Dr Wayne Pitchford has clearly documented the effects of the Muscle Gene as shown below.

	Two Copies of the Gene:	Zero Copies of the Gene:	% Difference:
Hot Carcase Weight	390.8 kg	380.2 kg	+3%
Weight of Silverside	11.58 kg	9.76 kg	+19%
Eye Muscle Area	102.0 sq cm	86.1 sq cm	+19%
Retail Beef Yield	73.4%	68.1%	+8%
Shear force of Loin Muscle*	4.06	4.30	- 6%
Shear force of Silverside*	3.94	4.43	-11%

Note: (*) lower shear force indicates more tender beef

How big is the effect if I use a Limousin bull over cows of another breed?

Most Limousin bulls carry two copies of the Limousin Muscle Gene so each of the progeny will get at least one copy of the Gene from the bull.

Animals with one copy are likely to exhibit about half the differences shown above.

A Limousin cross calf is expected to have –

- * 9.5% more Silverside,
- * 9.5% larger Eye Muscle Area
- * 4% more Retail Beef Yield
- * 3% increase in Tenderness of the Loin Muscle
- * 5.5% increase in Tenderness of the Silverside.

F94L Verification

All bulls in this Sale are descendants of Stud Sires whom have had their F94L status verified by a DNA Test.

What is a Limousin bull worth?

A Limousin bull siring 30 calves per year over 5 years.

Realistically these calves – steers & heifers – can make a \$50 premium per head in the market.

Therefore it can be reasoned the bull is worth $30 \times 5 \times \$50 = \$7,500$ MORE to the Buyer!

ID No.	Rank	LWT (kg)	Rib Fat (mm)	Rump Fat (mm)	IMF (%)	EMA (cm ²)	Carcass Merit Index: Vers. 5:	Age: (mths)	CMI/Age:	Sire:	Skin Color:	Horn Status:
Yearling Bulls (12-14 mths):												
Q179	1	465	5.0	5.0	2.9	105.29	2647.6	13.2	200.8	F88	Black	Polled
Mean:		478	4.8	4.8	3.0	105.40	2729.96	12.9	211.8			
Yearling Bulls (14-18 mths):												
Q89	1	590	6.0	6.0	3.4	130.38	3307.3	15.4	214.5	G70	Apricot	Polled
Q163	2	504	5.0	5.0	3.2	115.81	2986.4	13.9	214.3	F88	Black	Scurred
Q72	3	684	5.0	5.0	3.2	124.88	3489.5	16.6	209.8	L214	Apricot	Dehorned
Q87	4	620	6.0	6.0	4.1	113.64	3097.2	15.1	205.7	L214	Black	Scurred
Q153	5	630	5.0	5.0	3.7	113.86	3231.6	15.7	205.2	G70	Apricot	Scurred
Q103	6	632	5.0	6.0	3.7	121.74	3320.7	16.2	204.5	G133	Apricot	Scurred
Q129	7	618	6.0	6.0	3.9	119.75	3197.3	15.7	203.1	L214	Apricot	Scurred
Q150	8	614	5.0	5.0	3.1	116.53	3174.5	15.8	201.2	G70	Blue	Polled
Q139	9	580	5.0	6.0	3.5	120.25	3170.6	15.9	199.3	L96	Apricot	Scurred
Q155	10	520	5.0	6.0	3.9	113.38	2977.9	15.0	198.7	K121	Strawberry	Polled
Q75	11	616	6.0	6.0	3.6	125.66	3278.4	16.8	194.8	G133	Apricot	Scurred
Q114	12	598	5.0	5.0	3.1	114.91	3112.2	16.1	193.2	L214	Apricot	Scurred
Q65	13	628	5.0	5.0	2.8	119.98	3229.3	16.8	192.2	M150	Apricot	Scurred
Q67	14	580	5.0	5.0	3.3	119.97	3220.6	16.9	190.6	M150	Apricot	Polled
Q97	15	544	5.0	5.0	3.4	112.44	3010.5	15.9	189.6	G70	Apricot	Polled
Q134	16	608	5.0	5.0	2.8	108.13	2937.8	15.6	187.7	L214	Apricot	Dehorned
Q188	17	544	6.0	6.0	3.6	104.40	2694.1	14.4	187.5	F88	Black	Dehorned
Q76	18	632	6.0	6.0	3.5	116.27	3086.8	16.5	187.1	M150	Apricot	Polled
Q108	19	618	6.0	6.0	3.1	113.38	2941.7	16.0	183.7	L214	Black	Scurred
Q100	20	580	5.0	6.0	3.5	112.06	2992.5	16.3	183.5	G133	Apricot	Polled
Q133	21	552	5.0	6.0	3.1	108.42	2807.1	15.3	183.2	L96	Apricot	Polled
Q63	22	606	5.0	6.0	2.7	117.26	3032.6	16.6	183.0	G133	Apricot	Dehorned
Q85	23	479	5.0	5.0	3.4	103.00	2695.0	15.0	179.8	L96	Apricot	Scurred
Q137	24	530	6.0	7.0	4.3	109.31	2793.9	15.7	177.8	L106	Black	Polled
Q66	25	570	5.0	6.0	3.9	110.01	2989.7	16.8	177.6	M150	Apricot	Polled
Q154	26	525	6.0	6.0	3.5	103.26	2622.2	14.8	176.9	F88	Apricot	Polled
Q113	27	548	5.0	7.0	3.7	108.80	2811.1	16.0	175.2	G70	Apricot	Polled
Q159	28	506	6.0	6.0	3.4	106.40	2643.5	15.2	174.4	K121	Blue	Dehorned

Q151	29	556	5.0	5.0	3.1	102.11	2762.5	15.9	174.0	L96	Apricot	Polled
Q142	30	532	5.0	5.0	2.9	104.35	2655.5	15.3	173.3	L96	Apricot	Polled
Q112	31	532	6.0	6.0	3.2	111.99	2779.8	16.1	172.2	G133	Apricot	Polled
Q82	32	554	4.0	5.0	2.7	98.31	2703.6	15.7	172.1	L96	Apricot	Scurred
Q60	33	548	6.0	6.0	3.1	111.29	2777.2	16.5	168.6	M150	Apricot	Polled
Q80	34	490	4.0	4.0	2.8	93.45	2589.3	15.6	166.2	K121	Blue	Scurred
Q99	35	518	5.0	5.0	2.3	104.72	2637.3	16.1	164.1	L96	Apricot	Polled
Q110	36	608	5.0	5.0	2.3	97.02	2623.0	16.0	163.8	L214	Apricot	Scurred
Q165	37	482	5.0	6.0	3.2	90.09	2304.6	14.2	162.7	K121	Strawberry	Polled
Mean:		569	5.3	5.6	3.3	111.13	2930.7	15.7	186.3			
Mature Bulls (19-25 mths):												
Q52	1	714	6.0	6.0	3.6	128.48	3506.3	19.9	176.3	H59	Apricot	Scurred
Q33	2	680	5.0	6.0	3.9	122.89	3456.6	19.8	174.7	H59	Apricot	Polled
Q24	3	716	6.0	6.0	3.8	125.31	3470.1	21.1	164.2	F88	Black	Scurred
P182	4	882	7.0	7.0	3.9	143.16	3983.6	25.0	159.4	L214	Apricot	Scurred
Q04	5	700	5.0	5.0	3.2	120.25	3416.2	21.5	158.7	F88	Black	Polled
Q07	6	704	6.0	6.0	3.5	123.00	3355.5	21.8	154.0	F88	Black	Polled
Q11	7	648	5.0	5.0	3.7	113.84	3261.7	21.2	153.8	F88	Black	Polled
Q16	8	696	6.0	6.0	4.2	118.01	3336.1	21.8	152.8	F88	Black	Dehorned
Q09	9	690	5.0	5.0	3.4	112.65	3263.3	21.6	151.3	F88	Black	Polled
Q44	10	712	7.0	7.0	3.9	110.88	2993.2	20.0	150.0	H59	Apricot	Polled
Q22	11	652	5.0	6.0	4.1	110.28	3164.2	21.4	147.9	F88	Black	Polled
Q03	12	692	7.0	9.0	4.5	120.44	3083.7	21.5	143.7	F88	Black	Polled
Mean:		705	5.8	6.2	3.8	120.57	3348.4	21.4	156.8			



LE MARTRES

BEEF









LOT 1		LE MARTRES BLUE QUENTIN Q150	
DOB: 7/9/19	Tattoo: LEM2Q150		
Purchaser:		\$

LOT 2		LE MARTRES BLACK QUINN Q24	
DOB: 28/3/19	Tattoo: LEM2Q24		
Purchaser:		\$

LOT 3		LE MARTRES STRAWBERRY QUINCY Q155	
DOB: 1/10/19	Tattoo: LEM2Q155		
Purchaser:		\$

LOT 4		LE MARTRES BLACK QUINTON Q163	
DOB: 2/11/19	Tattoo: LEM2Q163		
Purchaser:		\$

LOT 5		LE MARTRES BLACK QUINTIN Q07	
DOB: 8/3/19	Tattoo: LEM2Q07		
Purchaser:		\$

LOT 6		LE MARTRES BLACK QUINLAN Q87	
DOB: 29/9/19	Tattoo: LEMPQ87		
Purchaser:		\$

LOT 7		LE MARTRES BLACK QASIM Q04	
DOB: 16/3/19	Tattoo: LEM3Q04		
Purchaser:		\$

LOT 8		LE MARTRES BLACK QUADE Q108	
DOB: 31/8/19	Tattoo: LEMPQ108		
Purchaser:		\$

LOT 9		LE MARTRES BLACK QUEST Q22	
DOB: 20/3/19	Tattoo: LEM2Q22		
Purchaser:		\$

LOT 10		LE MARTRES BLACK QURAN Q09	
DOB: 15/3/19	Tattoo: LEM2Q09		
Purchaser:		\$

LOT 11		LE MARTRES BLUE QUIN Q159	
DOB: 26/9/19	Tattoo: LEM3Q159		
Purchaser:		\$

LOT 12		LE MARTRES STRAWBERRY QUINCEY Q165	
DOB: 26/10/19	Tattoo: LEM3Q165		
Purchaser:		\$

LOT 13		LE MARTRES BLACK QUINTUS Q16	
DOB: 7/3/19	Tattoo: LEM2Q16		
Purchaser:		\$

LOT 14		LE MARTRES BLACK QUSAI Q137	
DOB: 9/9/19	Tattoo: LEM3Q137		
Purchaser:		\$

LOT 15		LE MARTRES BLACK QUESTON Q03	
DOB: 18/3/19	Tattoo: LEM2Q03		
Purchaser:		\$

LOT 16		LE MARTRES BLACK QUAID Q11	
DOB: 26/3/19	Tattoo: LEM2Q11		
Purchaser:		\$

LOT 17		LE MARTRES BLACK QUAN Q80	
DOB: 13/9/19	Tattoo: LEM3Q80		
Purchaser:		\$

LOT 18		LE MARTRES BLACK QAIS Q188	
DOB: 20/10/19	Tattoo: LEM2Q188		
Purchaser:		\$

LOT 19		LE MARTRES QUADIR Q129	
DOB: 8/9/19	Tattoo: LEMFQ129		
Purchaser:		\$

LOT 20		LE MARTRES QUINTRELL Q151	
DOB: 4/9/19	Tattoo: LEMPQ151		
Purchaser:		\$

LOT 21		LE MARTRES QUSAY Q153	
DOB: 8/9/19	Tattoo: LEMPQ153		
Purchaser:		\$

LOT 22		LE MARTRES QUILL Q82	
DOB: 9/9/19	Tattoo: LEMPQ82		
Purchaser:		\$

LOT 23		LE MARTRES QUINNTON Q113	
DOB: 30/8/19	Tattoo: LEMPQ113		
Purchaser:		\$

LOT 24		LE MARTRES QUINTAVIOUS Q63	
DOB: 14/8/19	Tattoo: LEMPQ63		
Purchaser:		\$

LOT 25		LE MARTRES QADIR Q75	
DOB: 6/8/19	Tattoo: LEMPQ75		
Purchaser:		\$

LOT 26		LE MARTRES QUILLAN Q52	
DOB: 5/5/19	Tattoo: LEMPQ52		
Purchaser:		\$

LOT 27		LE MARTRES QUAMIR Q89	
DOB: 18/9/19	Tattoo: LEMPQ89		
Purchaser:		\$

LOT 28		LE MARTRES QUANTAVIOUS Q142	
DOB: 21/9/19	Tattoo: LEMPQ142		
Purchaser:		\$

LOT 29		LE MARTRES QUINTYN Q133	
DOB: 21/9/19	Tattoo: LEMPQ133		
Purchaser:		\$

LOT 30		LE MARTRES QUASHAWN Q99	
DOB: 29/8/19	Tattoo: LEMPQ99		
Purchaser:		\$

LOT 31		LE MARTRES QUAVON Q110	
DOB: 31/8/19	Tattoo: LEMPQ110		
Purchaser:		\$

LOT 32		LE MARTRES QUENTYN Q154	
DOB: 6/10/19	Tattoo: LEM2Q154		
Purchaser:		\$

LOT 33		LE MARTRES QUINT Q103	
DOB: 24/8/19	Tattoo: LEM3Q103		
Purchaser:		\$

LOT 34		LE MARTRES POSEIDON P182	
DOB: 1/12/18	Tattoo: LEMPP182		
Purchaser:		\$

LOT 35		LE MARTRES QUINNELL Q60	
DOB: 17/8/19	Tattoo: LEMFQ60		
Purchaser:		\$

LOT 36		LE MARTRES QUANTEZ Q85	
DOB: 1/10/19	Tattoo: LEMPQ85		
Purchaser:		\$

LOT 37		LE MARTRES QUAVION Q66	
DOB: 6/8/19	Tattoo: LEMPQ66		
Purchaser:		\$

LOT 38		LE MARTRES QUINTEZ Q33	
DOB: 8/5/19	Tattoo: LEMPQ33		
Purchaser:		\$

LOT 39		LE MARTRES QANTUS Q44	
DOB: 3/5/19	Tattoo: LEMPQ44		
Purchaser:		\$

LOT 40		LE MARTRES QUANTUM Q76	
DOB: 16/8/19	Tattoo: LEMPQ76		
Purchaser:		\$

LOT 41		LE MARTRES QASEM Q112	
DOB: 27/8/19	Tattoo: LEMPQ112		
Purchaser:		\$

LOT 42		LE MARTRES QUVON Q65	
DOB: 7/8/19	Tattoo: LEMFQ65		
Purchaser:		\$

LOT 43		LE MARTRES QASSIM Q72	
DOB: 12/8/19	Tattoo: LEMFQ72		
Purchaser:		\$

LOT 44		LE MARTRES QUARTEZ Q139	
DOB: 3/9/19	Tattoo: LEMPQ139		
Purchaser:		\$

LOT 45		LE MARTRES QUINLIN Q67	
DOB: 4/8/19	Tattoo: LEMPQ67		
Purchaser:		\$

LOT 46		LE MARTRES QUARTZ Q114	
DOB: 28/8/19	Tattoo: LEMPQ114		
Purchaser:		\$

LOT 47		LE MARTRES QUINTARIUS Q97	
DOB: 4/9/19	Tattoo: LEMPQ97		
Purchaser:		\$

LOT 48		LE MARTRES QUANTRELL Q134	
DOB: 11/9/19	Tattoo: LEMPQ134		
Purchaser:		\$

LOT 49

LE MARTRES QUINNTIN Q100

DOB: 22/8/19

Tattoo: LEMPQ100

Purchaser: \$

LOT 50

LE MARTRES BLACK QUICKSILVER Q179

DOB: 25/11/19

Tattoo: LEMPQ179

Purchaser: \$





LE MARTRES BEEF

Taking Delivery Of Your New Cattle - Bulls

To help your new cattle settle into their new property, the following points may be of assistance.

- * All Le Martres Beef cattle have been grazed in large herds all of their lives, so they have always had plenty of companion animals, and never been alone.
- * It is a good idea to have mature cattle of your own in the stockyards for company for when your new cattle arrive. These cattle will provide company for the new cattle, and encourage them to settle in quicker, and get to know the lay-out of your stockyards/races/ paddocks.
- * At Le Martres Beef we handle our cattle quietly and confidently, we always show our cattle respect, and our cattle respect us. We generally use motorbikes and dogs to yard the cattle. And, work the cattle on foot and with dogs in the stockyards. The cattle are not familiar with horses.
- * Handle you new cattle quietly and with respect and they will settle into their new property and herd and will be easy to handle whenever the need arises.

At Delivery

- * At Le Martres Beef we will work with you to ensure your newly purchased cattle are delivered safely, professionally and timely. We highly recommend Mr Joe Wilton as the nominated carrier.

During The Settling In Period

- * The majority of cattle have been grazed in a large herd.
- * Once unloaded, ensure the cattle have mature company and plenty of food and water.
- * Be aware it is a new environment for the cattle and, sometimes time in the yards with mature company and plenty of food and water may be required.
- * Do not box up bulls not familiar with each other – the majority of breakdowns/injuries are caused in the bull paddock when new bulls are directly added to an existing group of bulls.
- * Remember the pecking order scenario with other bulls – the newest addition into a bull paddock may receive a hard time for a while. Perhaps graze bulls in adjoining paddocks for some time before grazing together in the same paddock.
- * The bull(s) are use to being treated with respect and will respond accordingly to good management.

At Joining Time

- * For a young bull(s) arrange a minimal number of cows/heifers to allow the bull(s) to learn to serve and work amongst the herd. Practice makes perfect!!!
- * Observe the bull(s) closely and regularly at the commencement of a joining period. This ensures you are aware of the bulls ability to serve, and you will get to know their behaviour and manners. Continuing to observe the bull(s) will increase the chances of you noticing if an accident has occurred and/or females in the herd are returning from service. In which case, the bull(s) can be removed and a back up bull(s) placed in the herd.
- * If using more than one bull in a herd it is advisable to combine a mature with a young bull or two in a team.
- * Do not mate bulls with horns and polled/dehorned bulls together. Single mating is preferred.

After Joining Time

- * Try and combine younger bulls in the bull paddock, and graze older bulls in a separate herd to avoid injury of the older bulls.
- * Offer all bulls plenty of food and water in order to recover body weight and regain optimal health and nutrition.

Le Martres Beef Semen and Embryos For Sale

SEMEN:

Unlicensed Semen stored at Agrigene's Centre, Wangaratta, Victoria.

Le Martres Mozart	French Pure	\$50.00 per straw	(Packages available)
Le Martres Pierrot	French Pure	\$50.00 per straw	(Packages available)
Le Martres Valentino	French Pure	\$50.00 per straw	(Packages available)
Le Martres Warwick	French Pure	\$50.00 per straw	(Packages available)
Le Martres Washington	French Pure	\$50.00 per straw	(Packages available)
Le Martres Chad	French Pure	\$50.00 per straw	(Packages available)
Le Martres Caesar	French Pure	\$50.00 per straw	(Packages available)
Le Martres Darby	French Pure	\$50.00 per straw	(Packages available)
Le Martres Eleazor	French Pure	\$50.00 per straw	(Packages available)
Le Martres Lafferty	French Pure	\$50.00 per straw	(Packages available)
Le Martres Maestro	French Pure (Poll)	\$100.00 per straw	(Packages available)

Le Martres Delwyn	Aust. Pure (Apr & Horn)	\$50.00 per straw	(Packages available)
Le Martres Governor	Aust. Pure (Apr & Poll)	\$50.00 per straw	(Packages available)
Le Martres Hambleton	Aust. Pure (Red & Poll)	\$50.00 per straw	(Packages available)
Le Martres Lange	Aust. Pure (Apr & Scurred)	\$50.00 per straw	(Packages available)

Le Martres Black Walmsley	Aust. Pure (Blk & Poll)	\$50.00 per straw	(Packages available)
Le Martres Black Worsley	Aust. Pure (Blk & Horn)	\$50.00 per straw	(Packages available)
Le Martres Black Xcalibre	Aust. Pure (Blk & Horn)	\$50.00 per straw	(Packages available)
Le Martres Black Xtreme	Aust. Pure (Blk & Poll)	\$50.00 per straw	(Packages available)
Le Martres Black Antonio	Aust. Pure (Blk & Poll)	\$50.00 per straw	(Packages available)
Le Martres Black Edbert	Aust. Pure (Blk & Poll)	\$50.00 per straw	(Packages available)
Le Martres Black Herald	Aust. Pure (Blk & Scurred)	\$50.00 per straw	(Packages available)
Le Martres Black Jacob	Aust. Pure (Blk & Scurred)	\$50.00 per straw	(Packages available)
Le Martres Black Jenkins	Aust. Pure (Blk & Poll)	\$50.00 per straw	(Packages available)
Le Martres Black Leonardo	Aust. Pure (Blk & Scurred)	\$50.00 per straw	(Packages available)

Le Martres Daley	Grade 2 (Apr & Poll)	\$50.00 per straw	(Packages available)
Le Martres Eben	Grade 2 (Apr & Scur)	\$50.00 per straw	(Packages available)
Le Martres Black Fagan	Grade 2 (Blk & Poll)	\$50.00 per straw	(Packages available)
Le Martres Blue Kaleb	Grade 2 (Blue & Poll)	\$50.00 per straw	(Packages available)
Le Martres Blue Hercules	Grade 1 (Blue & Poll)	\$50.00 per straw	(Packages available)
Le Martres Red Henry	Grade 1 (Dark Red & Poll)	\$50.00 per straw	(Packages available)
Le Martres Red Jarmin	Grade 1 (Dark Red & Poll)	\$50.00 per straw	(Packages available)

Limoges El Bulli	Aust. Pure (Blk & Poll)	\$50.00 per straw	(Packages available)
Limoges Esument	Aust. Pure (Apr & Poll)	\$50.00 per straw	(Packages available)

Sundowner Toro	French Pure	\$50.00 per straw	(Packages available)
Sundowner Xavier	French Pure	\$50.00 per straw	(Packages available)
Ivyrock Jean	French Pure	\$50.00 per straw	(Packages available)
Ivyrock Klipse	French Pure	\$50.00 per straw	(Packages available)

Licensed Semen stored at Agrigene's Centre, Wangaratta, Victoria.

Prices and Availability on application:

Aznavour Charles	Filou	Labyille	Tamis
B. Delors	Fixe	Leonay Oscar	Tuts Treasure
Black Ox Junior	Flash	Little London Faceur	Tanhill Premier
Burton Ozzy	Foxtrot	Lukas Sandie	Tanhill Tigre
Daget	Frappeur	Marden Umph	Tanhill Rumpus
Earthquake 93,	Fripon 1	Oakley Sirius	Tanhill Sogood
Email	Goldenview Revamp	Petard	Tanhill Claus
Echo	Hampton Filin	Prince of Paris	White Lakes Black Polled
Esbrouffeur	Hampton Valiant	Refstrup Tabias	Gamlber
Famous	Harvest Rajah	Shatton Pedro	White Lakes Yuletide
Fantastique	Hengrave Trooper	Streamville Colin	Wilkesly Sampson
Fieldhouse Pilate	Hvidbjerg Adam	Sundowner Fancy	

EMBRYOS:

Embryos stored at Agrigene's Centre, Wangaratta, Victoria.

Prices and Availability on application:

Selection of French Pure embryos sired by,
 Framoire King Blonde
 Matching Fan Fan
 Tanhill Rumpus
 Wintershall Funamble

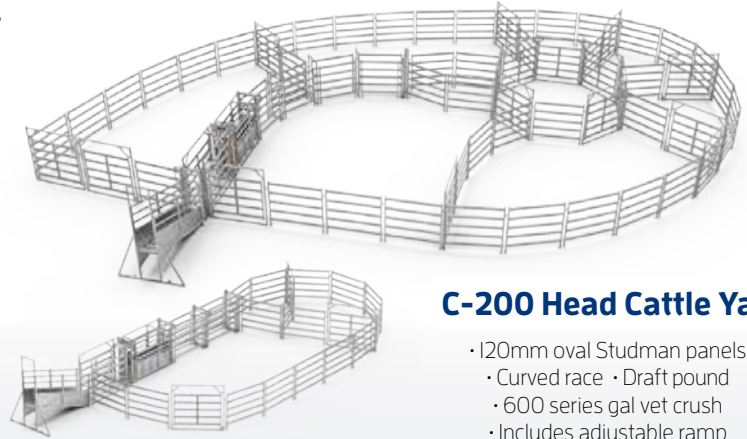
Selection of Black Polled Australian Pure embryos by,
 Lukas Sandie
 Topaki Nero
 White Lakes Black Opal



Give us a call now! **1800 65 77 66**

1200 Series HD Crush

- Hot dipped galvanised
- Patented anti-rattle latches
- Single parallel squeeze
- Super duty head bail
- Full vet section
- Three unique side doors for easy animal access



C-200 Head Cattle Yard

- 120mm oval Studman panels
- Curved race
- Draft pound
- 600 series gal vet crush
- Includes adjustable ramp
- Total area 398m²

C-50 Head Cattle Yard

- Yardsmen oval 71mm oval panels
- Includes adjustable ramp
- 600 series vet crush
- Total area 110m



Forced Tub and Race

- Hot dipped galvanised
- Curve force and race system
- Fully adjustable for all cattle sizes
- Available in 120 - 360 degree tubs or without race



Automatic 3 Way Draft

- Heavy duty galvanised construction
- Access gates with slam latches
- Pneumatically driven from crush control panel
- Designed to work with Clipex HD series pneumatic crushes

Don't waste time tying wire to fence posts
Do it right and clip them in!



Clipex® Fence Posts



Clipex® Wire



Clipex® End Assemblies



New S-fence Wire!

SAFE - SECURE - SIMPLE
Fabricated in Australia
Introductory pricing available!

SALTFREE

DESALINATION

AUST PTY LTD

Various units available for domestic & commercial applications • Competitive affordable prices
Australian made & owned



- 12,000 litres – 500,000 litres per day depending on your water quality.
- Additional dosing pump on all units as standard for administering anti-scalent.
- Computerized units will independently refill water storage tanks automatically.
- Sturdy, attractive, strong & compact framework.
- Ability to treat up to 10,000 ppm with either a manual or automatic format for brackish water, as well as a sea treatment system specific for treating water quality up to 35,000 ppm.
- 12 month warranty and hand held T.D.S meter comes as standard issue.

ON A ROLL.

P.A.

1.9%

FINANCE FOR
60 MONTHS*

across the Krone range

COMPRIMA COMBI PACK

New W-Pattern tine arrangement camless pick-up for constant flow of crop.

New ultrasound sensor that replaces the sensor arms on the wrapping table.

Extra wheel and rubber mat on the bale turner that effectively protects the paddock and drop down action of the bale turner.

CCI1200 12" terminal standard.



*Offer is available for business borrowers only. 1.9%p.a. finance rate, no repayments for the first 6 months then monthly repayments. Maximum term 60 months, a minimum 20% deposit, minimum financed amount of \$4,000 and no residual payments. Terms, conditions, fees, charges and credit criteria apply. Different term and different deposit may result in a different rate. Credit provided by Kubota Australia Pty Ltd ABN 72005300621. This finance offer is available until 30/04/2020 with finance application submitted by 31/05/2020 and applies to new Krone models.

TAKE PERFORMANCE UP A GEAR

0%

COMPARISON RATE
FOR 36 MONTHS**

across the RTV range

RTV-XG850 SIDEKICK

For the utility vehicle that takes performance up a gear, get in the driver's seat of Kubota's new Sidekick RTV-XG850.

Experience Kubota's fastest RTV yet with a dumping cargo tray, independent front and rear suspension, speed-sensitive electronic power steering, engine braking and a towing capacity of up to 907kg.



Bertolis Ag & Industrial Albury

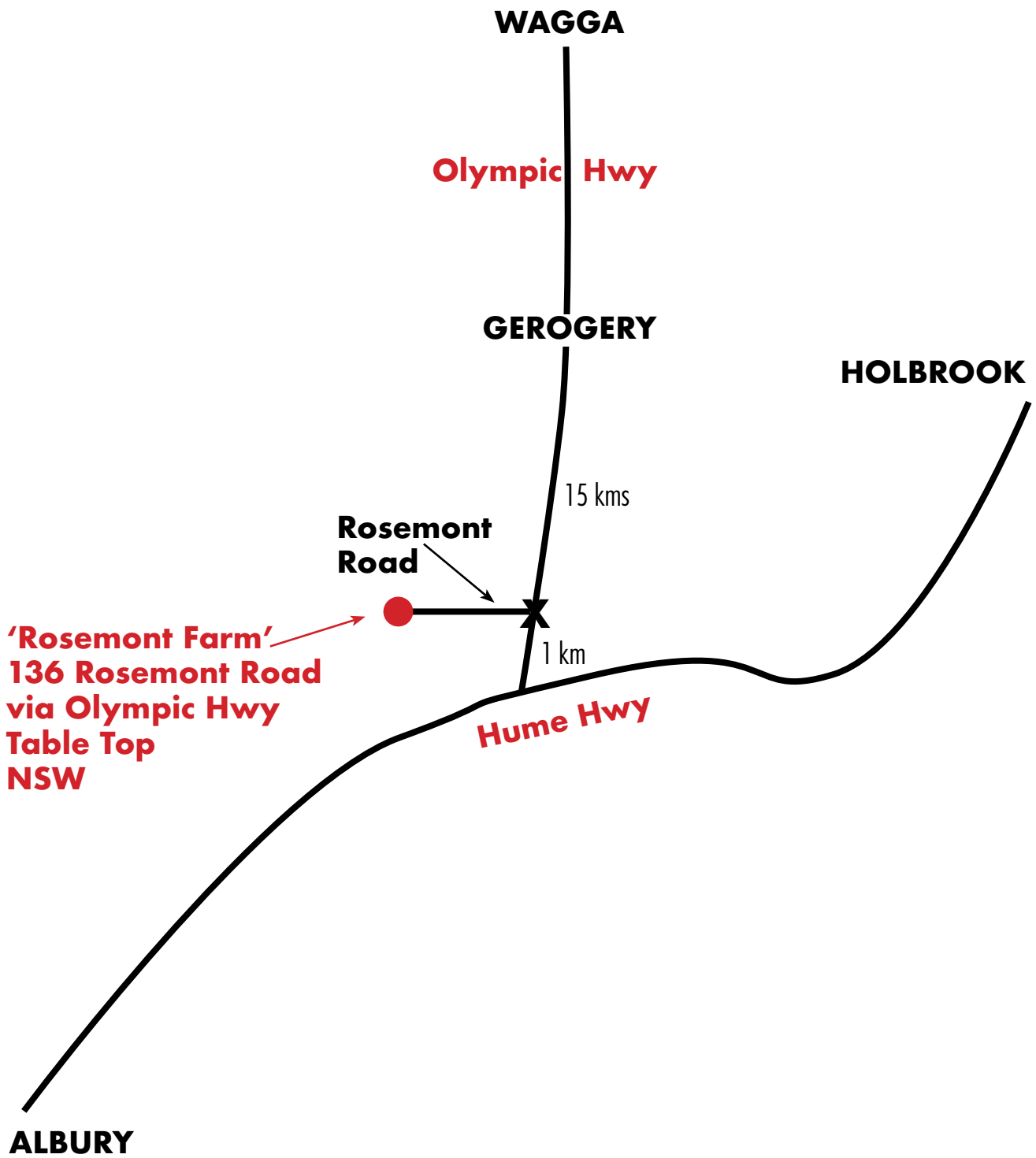
520 Dallinger Road
Albury NSW 2640

Ph: 02 6025 5390
Web: betolis.com.au

Kubota

**0.00% comparison rate based on \$30,000 secured loan with 60 monthly repayments. For both business and consumer borrowers. This offer is only available with a minimum 20% deposit, 36 monthly repayments and a minimum financed amount of \$4,000. Credit criteria applies. No upfront fees or account keeping fees. Fees may apply depending on how loan is conducted. Credit provided by Kubota Australia Pty Ltd ABN 72005300621, Australian Credit License Number 442007. "WARNING" The comparison rate is true only for the examples given and may not include all fees and charges. Different terms, fees or other loan amounts may result in a different comparison rate. This finance offer is available until 29/02/20 and applies to new RTV models.

LOCATION MAP





Stud Sire - LE Martres Black Mead M100 (Poll)

Designed & Printed by Graphipress 02 6041 1466



LE MARTRES
BEEF