

"Get With The Strength"

Le Martres Limousins

2016

Bull Sale



Friday 26th February, 2016

**On Property "Rosemont Farm",
Table Top, NSW**

**View cattle on:
www.lemartreslimousins.com**



LE MARTRES
LIMOUSIN STUD



LE MARTRES

LIMOUSIN STUD

NEWS UPDATE

Le Martres Acquires Ivyrock Limousin Stud Elite Cow Families

Le Martres has invested in it's future by acquiring a series of 'elite' cow families from the renowned Ivyrock Limousin Stud of Ballarat VIC at their 'Retirement Sale' last October 23rd 2015.

Over the last 2 decades Le Martres has championed the importance of Cow Families in breeding up the Le Martres herd to its current high profile status.

In this acquisition, three renowned dam families 'Premier Vixen Y22', 'Arkhide Magritte Q10' and 'Eclipse' IMP were secured.

1. Premier Vixen Y22 is a black & polled daughter of Premier Guardian V77 and Premier Vixen V13. Four daughters of this great cow were acquired.
2. Arkhide Magritte Q10 was a french pure daughter of Billabong Lancelot and Ardenvalle Lavinia. Two french pure polled daughters of this great cow were acquired.
3. Eclipse IMP was a french pure, imported cow. Through her son Arkhide Titanic, five grand daughters of this great cow were acquired.

By acquiring these new cows, outstanding traits have been acquired including marbling(IMF) percentages as high as 6.4%, eye muscle areas(EMA) as high as 125 sq. cm and liveweights up to 896 kg.

Le Martres looks forward to it's future by being able to offer great bulls from these new, high performing, well proven Limousin Cow families.



Eclipse (IMP)



Arkhide Titanic (ARKFT5)



Arkhide Magritte (ARKFQ10)



LE MARTRES
LIMOUSIN STUD

7th On Property Limousin Sale

30 Apricot & Black & Dark Red Limousin
Mature & Yearling Sires – with “Big Butts”

Friday 26th February, 2016

Inspections commence at 11 am
Helmsman Sale commences at 1 pm
with phone bidding available.

Location: 136 Rosemont Road, Table Top, NSW.
Directions: Just 2 kms north on the Olympic Highway after leaving the intersection of the Olympic & Hume Highways, turn left into Rosemont Road.

Le Martres Limousin Stud – The Martin Family

Leon & Sandra Martin
Ph.: 02 6043 1328
Mob.: 0428 577 138

Ian & Val Martin
Ph.: 02 6043 1070
Mob.: 0429 162 211

Stud Manager:

Ron Leary
Ph.: 03 5728 6512
Mob.: 0417 506 742

Morning Tea and Luncheon at ‘Rosemont Farm’

Agents:



GTSM
Glasser Total Sales Management

Michael Glasser
0403 526 702



Mike Scollard - 0408 578 059
John Lang - 0408 576 446



LE MARTRES

LIMOUSIN STUD

STUD SIRES



Le Martres Chad (C90) - French Pure



Le Martres Darby (D58) - French Pure



Le Martres Black Drake (D89) - Aust. Pure, Black & Polled



Le Martres Black Declan (D41) - Aust. Pure, Black & Polled



LE MARTRES

LIMOUSIN STUD



Le Martres Black Edbert (E24) - Aust. Pure, Black & Polled



Le Martres Edwin (E42) - Aust. Pure & Polled



**Le Martres Eleazor (E57) -
French Pure**



Limoges El Bulli (E16) - Aust. Pure, Black & Polled



Limoges Esument (E22) - Aust. Pure & Polled



LE MARTRES

LIMOUSIN STUD

STUD DAMS



Le Martres Zille LEMFZ43



Le Martres Anabel LEMPA63



Le Martres Fifi LEMPF57



Le Martres Celest LEMPC55



LE MARTRES

LIMOUSIN STUD

Dear Fellow Beef Producers

Welcome to the seventh Le Martres Limousins Bull Sale.

We are delighted to again offer you another industry focused set of bulls.

This year, in addition to our draft of yearling bulls, we will offer a limited number of 'Ivyrock Limousin' two year old bulls.

Again, our Sale Bull team just seems to get better and better for a whole range of reasons. We urge you to read on and find out why.

For those of you whom know our cattle, we produce and grow out cattle under grass feed conditions. We believe our cattle will therefore move and readily perform well in a wide range of environments. And, this is why our cattle are highly fertile.

Established in 1988, Le Martres Limousin proudly breeds Limousin cattle with exceptional quality carcasses, a range of coat colors (apricot, black, red & blue) and an increasing selection of which are polled.

Our Limousin cattle are bred to perform in Australian conditions for your benefit.

The stud has a within herd genetic selection program based on 18 years of utilising the services of the 'Natural Ecosystems Group' (NEG) of Albury, NSW. This service utilises objective measurement - weighing, live scanning and indexing technology to identify cattle of superior 'meat yield and quality'.

The many benefits are,

- higher carcass yields
- better balanced carcasses, ie. ideal meat/fat/bone ratios
- greater carcass uniformity across progeny.
- higher value heifer progeny
- higher meat content (> 60% dressing percentage)
- higher 'Carcass Merit Index' post weaning for high meat performance (NEG; CMI >2000 @ 12 months, or NEG; CMI/mth > 166.67)
- adequate fat cover (>4 mm & < 10 mm) for softness and ease of finishing
- higher marbling (> 2.0 IMF) for meat quality.

Young herd sires are selected from within the herd on the basis of,

- born early & relatively small (ensuring shorter gestation & small birth size)
- high 'Carcass Merit Index' post weaning
- bred from superior milk performance dams
- structurally correct
- carrying large testicles well suspended away from the body.

We continue to place a great emphasis on cow families and, sons bred from these families.

As we continue to move amongst our clients, we find they achieve great success by retaining the F1 & F2 heifers from their commercial herds and, breed on with these cattle. Also, our Le Martres genetics are proving ideal for both grassland &/or feed-lot finishing, especially for domestic trade orders.

We remain dedicated to objectively improving the meat yield & quality of our cattle for your benefit.

"Become a successful member of the Le Martres TEAM. Join us in 2016"

Yours in Limousin,
The Martin Family.



Leon & Sandra Martin



Ian & Val Martin

SALE INFORMATION

The 'Selling System'

The Helmsman Sale will be conducted in the 'Woolshed' which is located in close proximity to the stockyards. Mr Michael Glasser of 'GTSM' will conduct the sale. There will be no sale ring, or selling of the bulls through a sale ring.

Buyers Orders and Phone Link Up

Mobile phones operate successfully at the Woolshed (venue). We encourage potential buyers who are unable to attend the sale to make arrangements with the vendor or the listed Sale Agents during the sale to place bids. Please make arrangements at least 48 hours prior to the Sale Day.

Video Link Up

There will be no video link up this year. Previously, this service proved too problem-matic with many viewers experiencing viewing problems due to poor internet service in their locality. We may choose to resume such a service in the future.

Inspection

Bulls can be inspected prior to the sale by arrangement with the vendor or Selling Agents. This gives us the opportunity to assist in selection of the most suitable genetics for your requirements.

Guarantee

Bulls - We guarantee to ensure all clients achieve one crop of calves from each bull purchased. The bulls have been selected for structural soundness. The bulls have been raised on a grass fed system which has proven successful over time to ensure our bulls/females are fertile. In the event of infertility, we (the vendor) guarantee (without expenses, interest, costs and damages) if any bull proves to be totally infertile or totally incapable of natural service, provided it is not caused by an injury or disease contracted since leaving the sale, to replace the bull with a bull of comparable value. Any claim for a bull must be lodged within 6 months of the date of the Sale direct with the vendor, and be accompanied with a relevant Veterinary Certificate. A claim will be considered on its merits by us (the vendor) and our Veterinarian.

Health

TB and Brucellosis free herd and stock are free to move anywhere in Australia. JD status is Protected. The bulls have been vaccinated previously with Vaxall 5 in 1 and Pestigard.

Tattoos

Certain bulls have an industry tattoo denoting the purity of '1', '2' or '3'. In explanation, the Le Martres Limousins Breeding Program selected young Herd Sires to introduce the traits of black coat color and polledness into the herd. Many of these sale bulls are of higher purity than these tattoos denote, and we ask you to take more notice of the percentage purity listed in the catalogue.

Objective Measurement

The yearling bulls have been weighed, carcass scanned and indexed as yearlings in December 2015.

This practice is meaningful by providing the buyer with information of the body type of the calves these bulls are likely to produce when their calves are of a similar age. Over time, this approach has proven to be reliable and, very well received by our clients. This information is provided in the catalogue for your reference.

The bulls will be weighed again just prior to the Sale and, have a scrotal measurement taken, and this information will be provided in a supplementary sheet.

Semen Collection

Each bull is being sold with 100% possession, marketing and ownership. Le Martres Limousins is reserving the right, if desired in the future, to collect semen from any bull for our own in herd use only. All costs associated with the collection of semen will be met by Le Martres Limousins, and collection would be done at a time suitable to the purchaser. The purchaser would have total control of the bull, including any marketing of the physical bull or semen.

Notice to all Buyers

Pre On Line Registration

1. All Buyers can prior to arriving go online at www.gtsm.net.au and register for this sale.

Sale Rebates

1. All Buyers who settle their purchases on the day by cheque/credit card will receive a 2% rebate.

Notice to all Agents

Pre On Line Registration

1. Agents can go online at www.gtsm.net.au and register their Buyers before escorting them to the sale.

Sale Rebates

1. All Agents attending the Sale and whom fully complete & sign the Registration Form and settle on their clients behalf will receive a 5% rebate on any of their clients purchases.
2. All Agents settling on their clients behalf only will receive a 1% rebate on any of their clients purchases.

Personal Transport To And From Sale Venue

We can arrange transport to and from the sale venue. Please contact the Agents of the Martin Family to make arrangements at least 48 hours prior to the Sale Day.

Air Facilities

Good airport facilities are available at Albury and Wagga Wagga. And private planes may also use Holbrook.

Accommodation

We recommend you contact the Motels direct:

Thurgoona Country Club Resort

1 Evesham Place,
THURGOONA
Ph: (02) 60431666

Chifley Albury

Cnr Dean & Elizabeth Streets,
ALBURY
Ph: (02) 60215366
reservations.albury@chifleyhotels.com

Catering

Refreshments for morning tea and a light lunch will be available on Sale Day.

Insurance

We encourage you to insure your purchases. All care will be taken to the conclusion of the sale but thereafter it is the purchaser's responsibility for any injury or death. We recommend you insure all purchases on the day with GTSM, agent for CGU Insurance, and insure for at least the first joining period.

Livestock Delivery

Joe Wilton is the vendor's nominated carrier, and he will be in attendance – Joe will help co-ordinate all transport arrangements for your new purchasers with Agents GTSM.

Important Notices

1. The vendor will not be responsible for any errors or omissions in this catalogue.
2. The Selling Agent, its members, subsidiary or related corporations, officers, agents and employees for themselves and for those for whom they act while exercising due care provide all information without responsibility and give no guarantee whatsoever as to its accuracy. All persons who attend the sale do so entirely at their own risk and the Selling Agent, its members, subsidiary or related corporations, officers, agents and employees and its principals, for themselves and for those for whom they act, do not assume or accept any responsibility or liability of whatever nature for any injury or damage whatsoever which may occur.



LE MARTRES

LIMOUSIN STUD

“Get With The Strength = Le Martres Limousins Bulls = The Cash Flow Solution”.

Le Martres bulls maximize the opportunity to achieve the best market prices available.

2015 has been proven to be another great year for ‘Le Martres Limousins’ and our clients.

Le Martres Limousins is widely known for adopting objective measurement to improve the carcass yield and quality. This process is reaping financial rewards for their clients and the greater Beef Industry.

A ‘weigh & Scan’ operation conducted on the 11.12.15 on the 2014 drop of yearling sires, which appear in the 2016 Bull Sale, provided the following averaged results and, a comparison with the previous 2013 drop showed the following exciting trends –

<u>Trait:</u>	<u>2014 Bulls Av. Result:</u>	<u>Comparison With 2013 Bulls:</u>
* Age	13.9 months	+0.7%
* Live Weight	511 kg	-0.8%
* Rib Fat	5.0 mm	+4.2%
* Rump Fat	5.8 mm	+7.4%
* Marbling/IMF	2.7 %	+17.4%
* EMA (Eye Muscle Area)	99.87 cm ²	+2.7%
* NEG; Carcase Merit Index	2523.8 (Super Elite)	+2.6%

We are very pleased with these results, given the short & dry Spring ‘15 weather we experienced.

We believe these cattle have performed very well, matching the previous years average live weight and increasing the average fat covers, marbling % and Muscling(Eye Muscle Area).

Again, we believe these results demonstrate the Le Martres Limousins within herd genetic selection program is producing cattle with ideally balanced carcasses and, cattle able to perform in Australian grassland conditions.

CALENDAR OF FUTURE EVENTS

2016 -

28th January	Southern Beef Week Open Day	On Property
26th February	Le Martres Limousins Bull Sale	On Property
27th February	Canberra Show - Limousin Judging	Canberra Showgrounds
4th April	Genomix Beef Genetic Sale	Toowoomba Showgrounds
15-18th September	Henty Machinery Field Days	Site/0522.1
24th September	Melbourne Show - Carcase Competition	Melbourne Showgrounds
25th September	Melbourne Show - Limousin Judging	Melbourne Showgrounds



LE MARTRES

LIMOUSIN STUD

2015 Royal Melbourne Show Beef Cattle Carcase Competition

UPDATE: After enjoying our involvement with local schools and entering steers into the 2014 Melbourne Show Beef Carcase Competition, we arranged for another consignment of steers to go with even more local schools for the 2015 Melbourne Show.

This year for the first time we purchased purebred steers from the Limoges Limousin Stud of Lake Tarago via Goulburn NSW, owned and operated by Dr John Sheehy & Family. The Limoges stud is founded on 100% Le Martres genetics, thus giving us another opportunity to test our genetics, but secured from a different herd & environment.

We placed 2 steers with,

**Mr Ron Webb & his students from Rutherglen High School VIC,
Mr Wayne Whale & his students at St Pauls College at Walla Walla NSW
Mrs Michelle Godde & her students at Billabong High School at Culcairn NSW
Mr Luke Collins & his students at Yanco Agricultural High School at Yanco NSW**

And, we placed 1 steer with,

Mr Gary Webb & his students from Finley High School NSW.

On September 22nd 2015, Mr Ron Leary and Mr David Grant representing Le Martres Limousins and, Mrs Margaret Pierce of 'Belanglo Park', Gerogery NSW attended the Melbourne Show to watch the steers being judged 'On The Hoof'.

All schools and their students had done a marvellous job in feeding and coaching the steers in preparedness for the big Show. And, all students competed well and gave our steers every opportunity.

In 2014 Mrs Pierce's steer, bred with 100% Le Martres genetics and, exhibited by Billabong High School, won

- 1. In the Led Class Awards -
'Champion Heavy Domestic Steer' and 'Champion Steer'.**
- 2. In the School & College Awards -
'Champion Schools Led Steer'.**

This year Le Martres again backed up, with Limoges Kanga, Exhibit No.280, exhibited by St Pauls College, winning

- 1. In the Led Class Awards -
'Champion Heavy Domestic Steer' and 'Reserve Champion Steer'.**
- 2. In the School & College Awards -
'Reserve Champion Schools Led Steer'**



Congratulations to Mr Wayne Whale & his students and, St Paul College.

The following day, the steers were trucked away to a local abattoir and killed and during the following weeks the carcase results released.

cont. over page



LE MARTRES

LIMOUSIN STUD

2015 Royal Melbourne Show Beef Cattle Carcase Competition cont...

Le Martres Limousins continue to embrace entering the Melbourne Show Ring with steers with the help of local schools. This formula has proven to be a win win situation.

Firstly, by donating steers to local schools operating an Agriculture Department, the students are seizing the opportunity to learn to prepare and show cattle and, then enter the Show Ring and compete against the best handlers in the Beef Industry. The experience the students are gaining is absolutely invaluable. They pick up skills they will carry all through-out their lives, skills they can call on at anytime and skills that no one can ever take away from them.

Congratulations to the following schools and their head Agriculture teachers for their brilliant work in 2015.

- St Pauls College of Walla Walla NSW and Mr Wayne Whale.
- Billabong High School of Culcairn NSW and Mrs Michelle Godde.
- Rutherglen High School of Rutherglen VIC and Mr Ron Webb.
- Yanco Agricultural High School of Yanco NSW and Mr Luke Collins.
- Finley High School of Finley NSW and Mr Gary Webb.



Secondly, this process allows Le Martres Limousins to research and assess how our genetics will perform.

The following is a summary of how our steers performed.

Class 1 – Medium Domestic: 39 head of steers entered, including 2 head of Le Martres Limousins steers.

39 head of steers versus 2 head of Le Martres Limousins steers -

Tag No.:	Dressing %	Rib Fat (mm)	Rump Fat (mm)	EMA (sq.cm)	IMF (MSA)	Retail Value (\$)
----------	------------	--------------	---------------	-------------	-----------	-------------------

Average of 39 head of steers:	53.38	4.9	5.9	72.8	240	-
Average of 2 head of Le Martres Limousins steers:	58.00	2.0	2.5	105.0	175	1337.30+GST
Differences:	+4.62 (+8.7%)	-2.9 (-59.1%)	-3.4 (-57.6%)	+32.2 (+44.2%)	-65 (-27.1%)	-

Class 2 – Heavy Domestic: 95 head of steers entered, including 4 head of Le Martres Limousins steers.

95 head of steers versus 4 head of Le Martres Limousins steers -

Tag No.:	Dressing %	Rib Fat (mm)	Rump Fat (mm)	EMA (sq.cm)	IMF (MSA)	Retail Value (\$)
----------	------------	--------------	---------------	-------------	-----------	-------------------

Average of 95 head of steers:	55.17	6.6	8.4	85.6	313	-
Average of 4 head of Le Martres Limousins steers:	58.38	6.5	6.3	100.8	250	1732.54+GST
Differences:	+3.21 (+5.8%)	-0.1 (-1.5%)	-2.1 (-25.0%)	+15.2 (+17.8%)	-63 (-20.1%)	-

Class 3 – Export: 59 head of steers entered, including 2 head of Le Martres Limousins steers.

59 head of steers versus 2 head of Le Martres Limousins steers -

Tag No.:	Dressing %	Rib Fat (mm)	Rump Fat (mm)	EMA (sq.cm)	IMF (MSA)	Retail Value (\$)
----------	------------	--------------	---------------	-------------	-----------	-------------------

Average of 59 head of steers:	56.60	8.0	10.0	99.2	392	-
Average of 2 head of Le Martres Limousins steers:	60.60	6.5	5.5	108.0	315	1724.08+GST
Differences:	+4.10 (+7.2%)	-1.5 (-18.7%)	-4.5 (-45.0%)	+8.8 (+8.9%)	-77 (-19.61%)	-

These comparisons prove Le Martres genetics consistently carry adequate & even fat cover over the carcass and **excel in eye muscle area or muscularity**, hence the high dressing percentage and retail \$ value.

The 8 head of steers were at slaughter, on average, 392 days or approx. 12.8 months of age.

Thirdly, using purebred steers, this meant our cattle were eligible to be selected on behalf of the Limousin Breed for the Borthwick Trophy. Exhibit No.280, Limoges Kanga, was selected into the Limousin team and the team of three representing the breed came second on points. To our delight, our steer was the highest scoring Limousin steer in the team and, was the third highest individual scoring steer in the whole event involving 193 animals.

In conclusion, in our view, adopt Limousin genetics bred and engineered to meet Meat Industry specifications and you can afford to upgrade your entire beef herd to Purebred Limousin females using Le Martres genetics. More of our clients are breeding with Limousin infused females and collecting the dividends.



LE MARTRES

LIMOUSIN STUD

Objective Measurement Assessment - 11.12.15

Ranked by NEG; CMI:

The bulls were assessed and then be ranked from highest to lowest based upon a performance assessment offered by Natural Ecosystems Group (NEG) - NEG; Carcase Merit Index (CMI).

ID No.	Rank	LWT (kg)	Rib Fat (mm)	Rump Fat (mm)	IMF (%)	EMA (cm ²)	Carcase Merit Index; Vers. 5:	Sire:
Yearling Bulls (15 mths):								
K37	1	540	4.0	5.0	2.8	104.85	2836.5	E22
K87	2	515	5.0	5.0	2.3	111.71	2784.2	H01
K62	3	465	3.0	5.0	2.2	104.85	2706.6	E24
K83	4	535	5.0	6.0	2.9	106.40	2705.1	E24
K48	5	570	4.5	5.0	3.3	94.86	2701.0	C90
K55	6	465	5.0	6.0	3.1	109.56	2684.2	E22
K03	7	545	4.5	6.0	1.3	109.80	2604.3	H01
K40	8	495	3.0	4.5	1.9	97.78	2602.8	E16
K34	9	495	5.0	6.0	3.1	103.26	2598.1	C90
K54	10	560	6.0	6.0	3.2	101.32	2595.5	C90
K23	11	545	5.0	6.0	3.4	96.60	2582.5	E22
K60	12	515	6.0	6.0	2.9	106.22	2581.6	E57
K07	13	575	4.0	5.0	2.9	89.54	2577.8	E57
K75	14	490	4.0	5.0	2.8	96.67	2573.8	E57
K20	15	540	6.0	7.0	2.9	105.98	2533.3	E22
K88	16	480	4.5	4.5	1.9	99.61	2488.6	H01
K58	17	475	5.0	6.0	2.8	99.82	2445.4	E24
K69	18	520	6.0	6.0	2.6	101.55	2444.6	E22
K63	19	475	5.0	7.0	2.8	103.67	2443.6	E22
K50	20	535	3.5	6.0	2.1	91.78	2398.6	E22
K01	21	565	7.0	7.5	3.2	101.42	2392.4	E22
K22	22	510	6.0	7.0	2.7	103.16	2391.8	E22
K76	23	510	4.5	5.0	3.1	86.49	2387.6	E22
K72	24	435	5.0	5.0	2.3	95.73	2300.8	E22
K46	25	475	6.0	6.0	2.4	97.78	2256.9	D89
K81	26	485	6.0	6.0	3.1	91.39	2237.7	E57
K35	27	480	6.0	6.0	3.6	84.73	2157.8	E22
Mean:		511	5.0	5.8	2.7	99.87	2519.0	



LE MARTRES

LIMOUSIN STUD

Objective Measurement Assessment - 11.12.15

Ranked by NEG; CMI/AGE:

The bulls were assessed and then be ranked from highest to lowest based upon a performance assessment offered by Natural Ecosystems Group (NEG) - NEG; Carcase Merit Index (CMI)/Month.

ID No.	Rank	LWT (kg)	Rib Fat (mm)	Rump Fat (mm)	IMF (%)	EMA (cm ²)	Carcase Merit Index; Vers. 5:	Age: (mths)	CMI/Age:	Sire:
Yearling Bulls (15 mths):										
K87	1	515	5.0	5.0	2.3	111.71	2784.2	13.5	206.0	H01
K83	2	535	5.0	6.0	2.9	106.40	2705.1	13.4	201.2	E24
K37	3	540	4.0	5.0	2.8	104.85	2836.5	14.1	201.1	E22
K62	4	465	3.0	5.0	2.2	104.85	2706.6	13.8	195.6	E24
K48	5	570	4.5	5.0	3.3	94.86	2701.0	13.8	195.1	C90
K03	6	545	4.5	6.0	1.3	109.80	2604.3	13.4	194.6	H01
K75	7	490	4.0	5.0	2.8	96.67	2573.8	13.4	192.4	E57
K40	8	495	3.0	4.5	1.9	97.78	2602.8	13.5	192.2	E16
K34	9	495	5.0	6.0	3.1	103.26	2598.1	13.7	189.5	C90
K88	10	480	4.5	4.5	1.9	99.61	2488.6	13.3	186.4	H01
K55	11	465	5.0	6.0	3.1	109.56	2684.2	14.4	186.0	E22
K54	12	560	6.0	6.0	3.2	101.32	2595.5	14.1	183.6	C90
K07	13	575	4.0	5.0	2.9	89.54	2577.8	14.1	182.3	E57
K60	14	515	6.0	6.0	2.9	106.22	2581.6	14.2	181.4	E57
K20	15	540	6.0	7.0	2.9	105.98	2533.3	14.0	181.3	E22
K69	16	520	6.0	6.0	2.6	101.55	2444.6	13.5	180.5	E22
K23	17	545	5.0	6.0	3.4	96.60	2582.5	14.4	179.8	E22
K63	18	475	5.0	7.0	2.8	103.67	2443.6	13.7	178.2	E22
K22	19	510	6.0	7.0	2.7	103.16	2391.8	13.6	175.7	E22
K76	20	510	4.5	5.0	3.1	86.49	2387.6	13.6	175.4	E22
K58	21	475	5.0	6.0	2.8	99.82	2445.4	14.0	174.2	E24
K72	22	435	5.0	5.0	2.3	95.73	2300.8	13.4	171.1	E22
K50	23	535	3.5	6.0	2.1	91.78	2398.6	14.3	167.3	E22
K81	24	485	6.0	6.0	3.1	91.39	2237.7	13.4	167.2	E57
K46	25	475	6.0	6.0	2.4	97.78	2256.9	13.8	163.5	D89
K01	26	565	7.0	7.5	3.2	101.42	2392.4	14.7	162.8	E22
K35	27	480	6.0	6.0	3.6	84.73	2157.8	13.7	157.0	E22
Mean:		511	5.0	5.8	2.7	99.87	2519.0	13.8	182.3	

EXPLANATORY NOTES FOR CATALOGUE

LWT:

Live weight is measured by weighing the live animal. Results are measured in kilograms.

RIB & RUMP FAT:

Fat Depths are measured by carcass scanning of the live animal. Exterior fat depths are measured on both the 12/13th Rib and P8; Rump sites, and measured in millimetres.

Measures of >3mm and <10mm will be ideal results for Domestic Trade cattle.

EMA:

Eye Muscle Areas are measured by carcass scanning of the live animal. Such areas are measured on the 12/13th Rib site, and measured in square centimetres. Eye Muscle Areas(EMAs) greater than 100 cm sq. for either sex and all ages of cattle, excluding cattle under 6 months, will be a very good result.

IMF:

Intramuscular Fat is measured by carcass scanning of the live animal. IMF is measured on the 12/13th Rib site, and measures the percentage of fat distributed through-out the eye muscle.

Intramuscular Fat(IMF) measures of >2% will be ideal result for Domestic Trade cattle.

NEG; CMI:

The 'Natural Ecosystem Group (NEG); Carcass Merit Index' (CMI) is based upon the Live Weight(LW), Eye Muscle Area(EMA), Fat Depths(FD) and Intramuscular Fat(IMF) of the animals weighed & scanned.

Animals with heavy LW, large EMA, least FD and high IMF are rated highest by the 'NEG; CMI'.

The results are presented in groupings by age, and ranked from highest to lowest.

N.B It will be recommended animals under the age of 24 months be divided into groups with up to a three month spread of age for the purpose of peer group comparisons.

NEG; CMI/AGE:

The 'Natural Ecosystem Group (NEG); Carcass Merit Index' (CMI)/month is a powerful tool for assessing the performance of a live animal, ie. carcass merit relative to age. And, likewise, when comparing a live animal against its peers.

EXPLANATION OF THE SUFFIXES TO ANIMAL NAMES IN THIS CATALOGUE

Horn Status:	(HP*)	Homozygous Polled by DNA test
	(HP)	Homozygous Polled by progeny test
	(2P)	Homozygous Polled by pedigree
	(P)	Polled
	(S)	Scurred
Colour:	(HB)	Homozygous Black by DNA test
	(2B)	Homozygous Black by pedigree
	(B)	Black
	(R)	Red (not Apricot)
Protoporphyrin Status:	(PN)	Proto Normal
	(PF)	Proto free by pedigree
	(PC)	The animal is a carrier of the abnormal gene for Proto.
	(PS)	Proto suspect (parent of carrier animal)
	(PU)	The animal has not been tested for Proto or have parents which have been tested normal or are free by pedigree.

EXPLANATORY NOTES FOR CATALOGUE

F94L – The Limousin Muscle Gene

What are the effects of the Limousin Muscling Gene?

The research conducted by the Adelaide University group led by Dr Wayne Pitchford has clearly documented the effects of the Muscle Gene as shown below.

	Two Copies of the Gene:	Zero Copies of the Gene:	% Difference:
Hot Carcase Weight	390.8 kg	380.2 kg	+3%
Weight of Silverside	11.58 kg	9.76 kg	+19%
Eye Muscle Area	102.0 sq cm	86.1 sq cm	+19%
Retail Beef Yield	73.4%	68.1%	+8%
Shear force of Loin Muscle*	4.06	4.30	-6%
Shear force of Silverside*	3.94	4.43	-11%

Note: (*) lower shear force indicates more tender beef

How big is the effect if I use a Limousin bull over cows of another breed?

Most Limousin bulls carry two copies of the Limousin Muscle Gene so each of the progeny will get at least one copy of the Gene from the bull.

Animals with one copy are likely to exhibit about half the differences shown above.

A Limousin cross calf is expected to have –

- * 9.5% more Silverside,
- * 9.5% larger Eye Muscle Area
- * 4% more Retail Beef Yield
- * 3% increase in Tenderness of the Loin Muscle
- * 5.5% increase in Tenderness of the Silverside.

F94L Verification

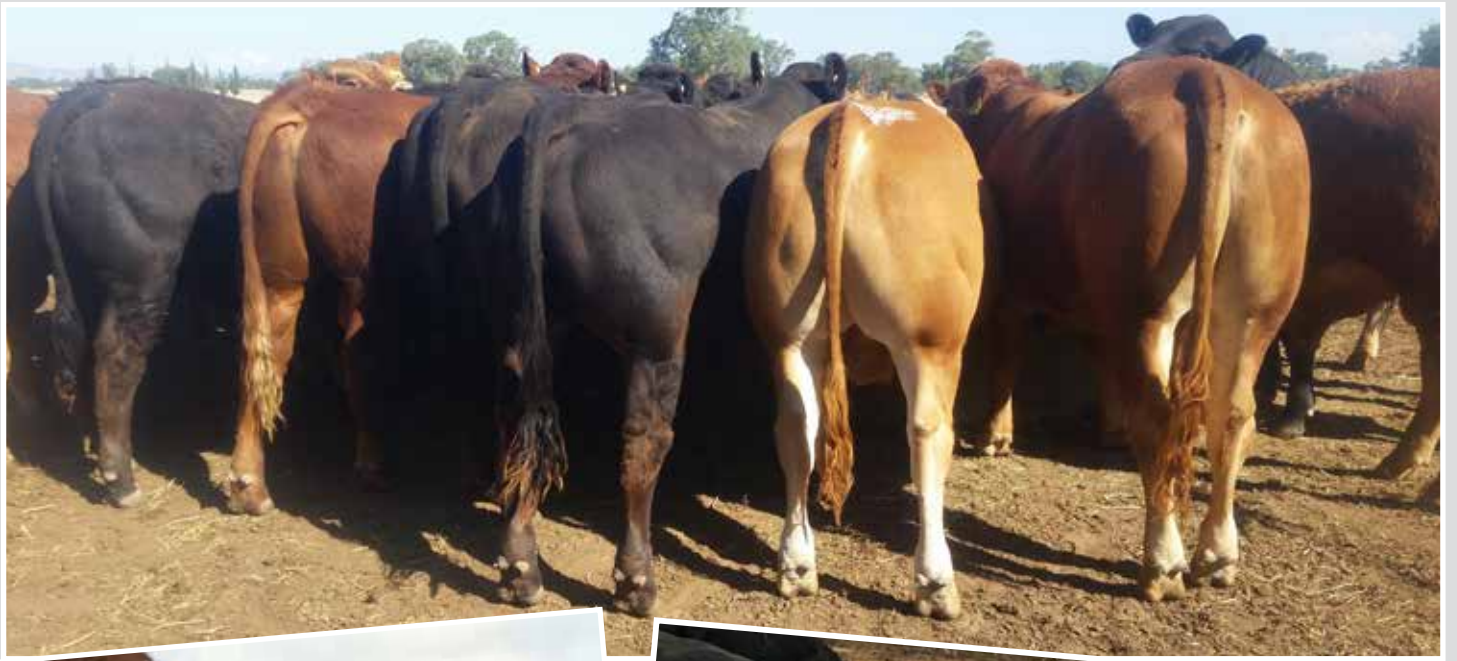
All bulls in this Sale have had their F94L status verified by DNA Test.

What is a Limousin bull worth?

A Limousin bull siring 30 calves per year over 5 years.

Realistically these calves – steers & heifers – can make a \$50 premium per head in the market. Therefore it can be reasoned the bull is worth 30 x 5 x \$50 - \$7,500 MORE to the Buyer!









1**LE MARTRES BLACK KEVIN****Tattoo:** LEMPK87 **Born:** 26/10/2014 **% FB:** 93.37**Black & Polled.**

Birth Weight 35-40 kg.

On 11.12.15 at 13.5 months –
Liveweight 515 kg,
Rib Fat 5.0 mm, Rump Fat 5.0 mm,
Intramuscular Fat (IMF) 2.3%,
Eye Muscle Area (EMA) 111.71 sq.cm,
NEG Carcase Merit Index (CMI) 2784.2 - Super Elite rating!!
NEG CMI/Age 206.0

F94L DNA Test – Available on Sale Day.

Protoporphyrin Test – Available on Sale Day.

Breeding - Purebred Limousin.

LE MARTRES BLACK REBEL (LEM3Q40) (P) (B) (PN)
LE MARTRES BLACK WORSLEY (LEM3W46) (B) (PN) (AA)
LE MARTRES NIACIN (LEMPN310) (PU)
Sire: LE MARTRES BLACK HERRATIO (LEMPH01) (P) (B) (PN) (AA)
LE MARTRES BLACK ANTONIO (LEMPA100) (P) (B) (PN) (AA)
LE MARTRES BLACK DEE (LEMPD70) (B) (P)
LE MARTRES ANNA (LEMPA16) (PU)

LE MARTRES VALENTINO (LEMFV37) (PN)
LE MARTRES BLACK ANTONIO (LEMPA100) (P) (B) (PN) (AA)
WHITE LAKES MEANT FOR LOVE (WLPM24) (P) (B) (PU)
Dam: LE MARTRES DAMALIS (LEMPD28) (PU)
LE MARTRES MOZART (LEMF263) (PU)
LE MARTRES SANDRA (LEMP55) (PU)
MARUNGI PBT P K 116 (PBTPK116) (PU)

Purchaser: \$

2**LE MARTRES KITCHNER****Tattoo:** LEMPK83 **Born:** 28/10/2014 **% FB:** 91.62**Apricot & Polled.**

Birth Weight 35-40 kg.

On 11.12.15 at 13.4 months –
Liveweight 535 kg,
Rib Fat 5.0 mm, Rump Fat 6.0 mm,
Intramuscular Fat (IMF) 2.9%,
Eye Muscle Area (EMA) 106.40 sq.cm,
NEG Carcase Merit Index (CMI) 2705.1 - Super Elite rating!!
NEG CMI/Age 201.2

F94L DNA Test – Available on Sale Day.

Protoporphyrin Test – Available on Sale Day.

Breeding - Purebred Limousin.

LE MARTRES VALENTINO (LEMFV37) (PN)
LE MARTRES BLACK ANTONIO (LEMPA100) (P) (B) (PN) (AA)
WHITE LAKES MEANT FOR LOVE (WLPM24) (P) (B) (PU)
Sire: LE MARTRES BLACK EDBERT (LEMP24) (B) (P) (PN) (AA)
LE MARTRES PIERROT (LEMP41) (PN)
LE MARTRES XCELLENCE (LEMPX09) (PU)
LE MARTRES SEPTEMBER (LEMP63) (PU)

LE MARTRES ATLAS (LEM3A34) (PU)
LE MARTRES DALEY (LEM2D9) (P) (PN) (AA)
LE MARTRES SUCROSE (LEM2S75) (P) (PU)
Dam: LE MARTRES FIFI (LEM2F57) (P) (PU)
LE MARTRES WASHINGTON (LEMF76) (PN)
LE MARTRES ANANNEE (LEMPA18) (PU)
LE MARTRES UNDERA (LEMPU40) (PU)

Purchaser: \$

3**LE MARTRES KIERAN****Tattoo:** LEMPK37 **Born:** 8/10/2014 **% FB:** 92.90**Apricot & Polled.**

Birth Weight 35-40 kg.

On 11.12.15 at 14.1 months –
Liveweight 540 kg,
Rib Fat 4.0 mm, Rump Fat 5.0 mm,
Intramuscular Fat (IMF) 2.8%,
Eye Muscle Area (EMA) 104.85 sq.cm,
NEG Carcase Merit Index (CMI) 2836.5 - Super Elite rating!!
NEG CMI/Age 201.1

F94L DNA Test – Available on Sale Day.

Protoporphyrin Test – Available on Sale Day.

Breeding - Purebred Limousin.

LE MARTRES BLACK WALMSLEY (LEM3W25) (P) (B) (PN) (AA)
LE MARTRES ATLAS (LEM3A34) (PU)
MARUNGI PBT P K 116 (PBTPK116) (PU)
Sire: LIMOGES ESUMENT (LIM3E22) (P) (PN) (AC)
LE MARTRES PIERROT (LEMP41) (PN)
LE MARTRES XHANNY (LEMPX28) (P) (PU)
LE MARTRES BLACK TAPIOCA (LEMP45) (B) (PU)

EDMOND CIM58 (IMFFN58) (PN)
LE MARTRES VALENTINO (LEMFV37) (PN)
LE MARTRES NATALIE (LEMFN278) (PU)
Dam: LE MARTRES BRIDGIT (LEMPB51) (PU)
LE MARTRES SKIP (LEMP34) (PN)
LE MARTRES UPRIGHT (LEMPU26) (PU)
LE MARTRES RAW DEAL (LEMPR58) (P) (PU) (AA)

Purchaser: \$

4

LE MARTRES BLACK KEITH

Tattoo: LEMPK62 **Born:** 16/10/2014 **% FB:** 91.90

Black & Polled.

Birth Weight 35-40 kg.

On 11.12.15 at 13.8 months –
Liveweight 465 kg,
Rib Fat 3.0 mm, Rump Fat 5.0 mm,
Intramuscular Fat (IMF) 2.2%,
Eye Muscle Area (EMA) 104.85 sq.cm,
NEG: Carcase Merit Index (CMI) 2706.6 - Super Elite rating!!
NEG CMI/Age 195.6

F94L DNA Test – Available on Sale Day.

Protoporphyrin Test – Available on Sale Day.

Breeding - Purebred Limousin.

LE MARTRES VALENTINO (LEMFV37) (PN)
LE MARTRES BLACK ANTONIO (LEMPA100) (P) (B) (PN) (AA)
WHITE LAKES MEANT FOR LOVE (WLPM24) (P) (B) (PU)
Sire: LE MARTRES BLACK EDBERT (LEMPE24) (B) (P) (PN) (AA)
LE MARTRES PIERROT (LEMFP41) (PN)
LE MARTRES XCELLENCE (LEMPX09) (PU)
LE MARTRES SEPTEMBER (LEMP563) (PU)

LE MARTRES ATLAS (LEM3A34) (PU)
LE MARTRES DALEY (LEM2D9) (P) (PN) (AA)
LE MARTRES SUCROSE (LEM2S75) (P) (PU)
Dam: LE MARTRES FIDELA (LEM2F59) (PU)
LE MARTRES PIERROT (LEMFP41) (PN)
LE MARTRES ANASTASIA (LEMPA11) (PU)
LE MARTRES BLACK RUSTAVI (LEMPR83) (B) (PU)

Purchaser: \$

5

LE MARTRES BLACK KENDALL

Tattoo: LEMPK48 **Born:** 16/10/2014 **% FB:** 87.50

Black & Scurred.

Birth Weight 35-40 kg.

On 11.12.15 at 13.8 months –
Liveweight 570 kg,
Rib Fat 4.5 mm, Rump Fat 5.0 mm,
Intramuscular Fat (IMF) 3.3%,
Eye Muscle Area (EMA) 94.86 sq.cm,
NEG: Carcase Merit Index (CMI) 2701.0 - Super Elite rating!!
NEG CMI/Age 195.1

F94L DNA Test – Available on Sale Day.

Protoporphyrin Test – Available on Sale Day.

Breeding - Purebred Limousin.

FLEURI (IMFFP60) (PU)
LE MARTRES WASHINGTON (LEMFW6) (PN)
TOPAKI ALICE AP2 (TPKFE2) (PU)
Sire: LE MARTRES CHAD (LEMFC90) (PN) (AA)
LE MARTRES TRUMAN (LEMFT15) (PU)
LE MARTRES WALLA (LEMFW45) (PU)
LE MARTRES KAARINA (LEMPK221) (PU)

LE MARTRES ANGUS (LEM0X203)
LE MARTRES MARTY (LEM1A39) (B) (PN)
LE MARTRES XADIS (LEMPX26) (PU)
Dam: LE MARTRES BLACK DANE (LEM2D127) (B) (PU)
LE MARTRES VALENTINO (LEMFV37) (PN)
LE MARTRES BRETTE (LEMPB78) (PU)
LE MARTRES XERA (LEMPX29) (PU)

Purchaser: \$

6

LE MARTRES BLACK KIMBALL

Tattoo: LEMPK03 **Born:** 30/10/2014 **% FB:** 92.35

Black & Polled.

Birth Weight 35-40 kg.

On 11.12.15 at 13.4 months –
Liveweight 545 kg,
Rib Fat 4.5 mm, Rump Fat 6.0 mm,
Intramuscular Fat (IMF) 1.3%,
Eye Muscle Area (EMA) 109.80 sq.cm,
NEG: Carcase Merit Index (CMI) 2604.3 - Super Elite rating!!
NEG CMI/Age 194.6

F94L DNA Test – Available on Sale Day.

Protoporphyrin Test – Available on Sale Day.

Breeding - Purebred Limousin.

LE MARTRES BLACK REBEL (LEM3Q40) (P) (B) (PN)
LE MARTRES BLACK WORSLEY (LEM3W46) (B) (PN) (AA)
LE MARTRES NIACIN (LEMPN310) (PU)
Sire: LE MARTRES BLACK HERRATIO (LEMPH01) (P) (B) (PN) (AA)
LE MARTRES BLACK ANTONIO (LEMPA100) (P) (B) (PN) (AA)
LE MARTRES BLACK DEE (LEMPD70) (B) (P)
LE MARTRES ANNA (LEMPA16) (PU)

FLEURI (IMFFP60) (PU)
LE MARTRES WASHINGTON (LEMFW6) (PN)
TOPAKI ALICE AP2 (TPKFE2) (PU)
Dam: LE MARTRES ANTONIA (LEMPA09) (PU)
LE MARTRES MOZART (LEMPM263) (PU)
LE MARTRES PERLE (LEMP34) (PU)
KENSAL SATIN (KGPM251) (PU)

Purchaser: \$

7**LE MARTRES KING****Tattoo:** LEMFK75 **Born:** 30/10/2014 **% FB:** 100.00**Apricot & Dehorned.**

Birth Weight 35-40 kg.

On 11.12.15 at 13.4 months –
Liveweight 490 kg,
Rib Fat 4.0 mm, Rump Fat 5.0 mm,
Intramuscular Fat (IMF) 2.8%,
Eye Muscle Area (EMA) 96.67 sq.cm,
NEG: Carcase Merit Index (CMI) 2573.8 - Super Elite rating!!
NEG CMI/Age 192.4

F94L DNA Test – Available on Sale Day.

Protoporphyrin Test – Available on Sale Day.

Breeding – French Pure Limousin.

LE MARTRES PIERROT (LEMFP41) (PN)
LE MARTRES ALDRICH (LEMFA48) (PN) (AA)
LE MARTRES NATALIE (LEMFN278) (PU)
Sire: LE MARTRES ELEAZOR (LEMFE57) (PN) (AA)
LE MARTRES WASHINGTON (LEMF6) (PN)
LE MARTRES ZILLE (LEMFZ43) (PU)
LE MARTRES RESOLVE (LEMFQ68) (PU)

FLEURI (IMFFP60) (PU)
LE MARTRES WASHINGTON (LEMF6) (PN)
TOPAKI ALICE AP2 (TPKFE2) (PU)
Dam: LE MARTRES CALLULA (LEMFC14) (PU)
LEONAY OSCAR (SXCFO5) (PN)
MOORLIM ORCHID (MARFR33) (PU)
MOORLIM JACARANDA (MARFN16) (PU)

Purchaser: \$

8**LE MARTRES BLACK KIDMAN****Tattoo:** LEMPK40 **Born:** 26/10/2014 **% FB:** 90.75**Black & Polled.**

Birth Weight 35-40 kg.

On 11.12.15 at 13.5 months –
Liveweight 495 kg,
Rib Fat 3.0 mm, Rump Fat 4.5 mm,
Intramuscular Fat (IMF) 1.9%,
Eye Muscle Area (EMA) 97.78 sq.cm,
NEG: Carcase Merit Index (CMI) 2602.8 - Super Elite rating!!
NEG CMI/Age 192.2

F94L DNA Test – Available on Sale Day.

Protoporphyrin Test – Available on Sale Day.

Breeding - Purebred Limousin.

LE MARTRES VALENTINO (LEMFV37) (PN)
LE MARTRES BLACK ANTONIO (LEMPA100) (P) (B) (PN) (AA)
WHITE LAKES MEANT FOR LOVE (WLPM24) (P) (B) (PU)
Sire: LIMOGES EL BULLI (LIM3E16) (P) (B) (PN) (AA)
LE MARTRES MOZART (LEMF263) (PU)
LE MARTRES PETULA (LEM2P73) (PU)
LE MARTRES NUTMEG (LEM1N296) (PU)

FARCEUR (LITTLE LONDON) (IMFFP2588) (PU) (AA)
LE MARTRES PIERROT (LEMFP41) (PN)
ARH LIMOUSIN A035 (ARHFA35) (PU)
Dam: LE MARTRES XINNA (LEMPX12) (PU)
WHITE LAKES NO MORE BETS (WLPN38) (P) (PU)
LE MARTRES SWANNIE (LEMP11) (P) (PU)
LE MARTRES NATALIE (LEMFN278) (PU)

Purchaser: \$

9**LE MARTRES KOTTRELL****Tattoo:** LEMPK34 **Born:** 20/10/2014 **% FB:** 98.74**Apricot & Dehorned.**

Birth Weight 35-40 kg.

On 11.12.15 at 13.7 months –
Liveweight 495 kg,
Rib Fat 5.0 mm, Rump Fat 6.0 mm,
Intramuscular Fat (IMF) 3.1%,
Eye Muscle Area (EMA) 103.26 sq.cm,
NEG: Carcase Merit Index (CMI) 2598.1 - Super Elite rating!!
NEG CMI/Age 189.5

F94L DNA Test – Available on Sale Day.

Protoporphyrin Test – Available on Sale Day.

Breeding - Purebred Limousin.

FLEURI (IMFFP60) (PU)
LE MARTRES WASHINGTON (LEMF6) (PN)
TOPAKI ALICE AP2 (TPKFE2) (PU)
Sire: LE MARTRES CHAD (LEMFC90) (PN) (AA)
LE MARTRES TRUMAN (LEMFT15) (PU)
LE MARTRES WALLA (LEMF45) (PU)
LE MARTRES KAARINA (LEMFK221) (PU)

HOMESTATION GURKA (PU)
HOMESTATION W2724 (HSFW2724) (PU)
HOMESTATION YURIKA (P) (PU)
Dam: WEMELERCK CAS (JJPA04) (PN)
WEMELERCK JUPITER (PU)
WEMELERCK N23 (JJP23) (PU)
STREAMVILLE A541 (PU)

Purchaser: \$

10

LE MARTRES BLACK KIRBY

Tattoo: LEMPK88 **Born:** 31/10/2014 **% FB:** 93.15

Black & Polled.

Birth Weight 35-40 kg.

On 11.12.15 at 13.3 months –
Liveweight 480 kg,
Rib Fat 4.5 mm, Rump Fat 4.5 mm,
Intramuscular Fat (IMF) 1.9%,
Eye Muscle Area (EMA) 99.61 sq.cm,
NEG: Carcase Merit Index (CMI) 2488.6 - Super Elite rating!!
NEG CMI/Age 186.4

F94L DNA Test – Available on Sale Day.

Protoporphyrin Test – Available on Sale Day.

Breeding - Purebred Limousin.

LE MARTRES BLACK REBEL (LEM3Q40) (P) (B) (PN)
LE MARTRES BLACK WORSLEY (LEM3W46) (B) (PN) (AA)
LE MARTRES NIACIN (LEMPN310) (PU)
Sire: LE MARTRES BLACK HERRATIO (LEMPH01) (P) (B) (PN) (AA)
LE MARTRES BLACK ANTONIO (LEMPA100) (P) (B) (PN) (AA)
LE MARTRES BLACK DEE (LEMPD70) (B) (P)
LE MARTRES ANNA (LEMPA16) (PU)

LE MARTRES ALDRICH (LEMFA48) (PN) (AA)
LE MARTRES DARBY (LEMPD58) (PN) (AA)
LE MARTRES TRINITY (LEMFT34) (PU)
Dam: LE MARTRES GEORGINA (LEMPG138) (PU)
LE MARTRES WASHINGTON (LEMPW6) (PN)
LE MARTRES CUPITT (LEMPFC124) (PU)
LE MARTRES WITNEY (LEMPW43) (PU)

Purchaser: \$

11

LE MARTRES KANE

Tattoo: LEMPK55 **Born:** 28/09/2014 **% FB:** 92.65

Apricot & Polled.

Birth Weight 35-40 kg.

On 11.12.15 at 14.4 months –
Liveweight 465 kg,
Rib Fat 5.0 mm, Rump Fat 6.0 mm,
Intramuscular Fat (IMF) 3.1%,
Eye Muscle Area (EMA) 109.56 sq.cm,
NEG: Carcase Merit Index (CMI) 2684.2 - Super Elite rating!!
NEG CMI/Age 186.0

F94L DNA Test – Available on Sale Day.

Protoporphyrin Test – Available on Sale Day.

Breeding - Purebred Limousin.

LE MARTRES BLACK WALMSLEY (LEM3W25) (P) (B) (PN) (AA)
LE MARTRES ATLAS (LEM3A34) (PU)
MARUNGI PBT P K 116 (PBTPK116) (PU)
Sire: LIMOGES ESUMENT (LIM3E22) (P) (PN) (AC)
LE MARTRES PIERROT (LEMPF41) (PN)
LE MARTRES XHANNY (LEMPX28) (P) (PU)
LE MARTRES BLACK TAPIOCA (LEMP45) (B) (PU)

EDMOND CIM58 (IMFFN58) (PN)
LE MARTRES VALENTINO (LEMPV37) (PN)
LE MARTRES NATALIE (LEMPN278) (PU)
Dam: LE MARTRES BLYTH (LEMPB55) (PU)
LE MARTRES BLACK REBEL (LEM3Q40) (P) (B) (PN)
LE MARTRES UPWARD (LEMPU53) (P) (PU)
MARUNGI NOVA (PBTPN320) (P) (PU)

Purchaser: \$

12

LE MARTRES BLACK KENNEDY

Tattoo: LEM3K54 **Born:** 7/10/2014 **% FB:** 86.00

Black & Dehorned.

Birth Weight 35-40 kg.

On 11.12.15 at 14.1 months –
Liveweight 560 kg,
Rib Fat 6.0 mm, Rump Fat 6.0mm,
Intramuscular Fat (IMF) 3.2%,
Eye Muscle Area (EMA) 101.32 sq.cm,
NEG: Carcase Merit Index (CMI) 2595.5 - Super Elite rating!!
NEG CMI/Age 183.6

F94L DNA Test – Available on Sale Day.

Protoporphyrin Test – Available on Sale Day.

Breeding – Grade 3 Limousin.

FLEURI (IMFFP60) (PU)
LE MARTRES WASHINGTON (LEMPW6) (PN)
TOPAKI ALICE AP2 (TPKFE2) (PU)
Sire: LE MARTRES CHAD (LEMPFC90) (PN) (AA)
LE MARTRES TRUMAN (LEMFT15) (PU)
LE MARTRES WALLA (LEMPW45) (PU)
LE MARTRES KAARINA (LEMPK221) (PU)

LE MARTRES ANGUS (LEM0X203)
LE MARTRES MARTY (LEM1A39) (B) (PN)
LE MARTRES XADIS (LEMPX26) (PU)
Dam: LE MARTRES BLACK DATE (LEM2D122) (B) (PU)
LE MARTRES VALENTINO (LEMPV37) (PN)
LE MARTRES BLYTH (LEMPB55) (PU)
LE MARTRES UPWARD (LEMPU53) (P) (PU)

Purchaser: \$

13**LE MARTRES BLACK KAVANAGH****Tattoo:** LEMPK07 **Born:** 7/10/2014 **% FB:** 98.60**Black & Scurred.**

Birth Weight 35-40 kg.

On 11.12.15 at 14.1 months –
Liveweight 575 kg,
Rib Fat 4.0 mm, Rump Fat 5.0 mm,
Intramuscular Fat (IMF) 2.9%,
Eye Muscle Area (EMA) 89.54 sq.cm,
NEG: Carcase Merit Index (CMI) 2577.8 - Super Elite rating!!
NEG CMI/Age 182.3

F94L DNA Test – Available on Sale Day.

Protoporphyrin Test – Available on Sale Day.

Breeding - Purebred Limousin.

LE MARTRES PIERROT (LEMFP41) (PN)
LE MARTRES ALDRICH (LEMFA48) (PN) (AA)
LE MARTRES NATALIE (LEMFN278) (PU)
Sire: LE MARTRES ELEAZOR (LEMFE57) (PN) (AA)
LE MARTRES WASHINGTON (LEMFW6) (PN)
LE MARTRES ZILLE (LEMZF43) (PU)
LE MARTRES RESOLVE (LEMFQ68) (PU)

LE MARTRES VALENTINO (LEMFV37) (PN)
LE MARTRES BLACK ANTONIO (LEMPA100) (P) (B) (PN) (AA)
WHITE LAKES MEANT FOR LOVE (WLP24) (P) (B) (PU)
Dam: LE MARTRES BLACK EADA (LEMPE30) (P) (B) (PU)
LE MARTRES PIERROT (LEMFP41) (PN)
LE MARTRES ANNA (LEMPA16) (PU)
LE MARTRES VEGA (LEMPV11) (PU)*Purchaser:* \$

14**LE MARTRES KASPARE'****Tattoo:** LEMFK60 **Born:** 4/10/2014 **% FB:** 100.00**Apricot & Dehorned.**

Birth Weight 35-40 kg.

On 11.12.15 at 14.2 months –
Liveweight 515 kg,
Rib Fat 6.0 mm, Rump Fat 6.0 mm,
Intramuscular Fat (IMF) 2.9%,
Eye Muscle Area (EMA) 106.22 sq.cm,
NEG: Carcase Merit Index (CMI) 2581.6 - Super Elite rating!!
NEG CMI/Age 181.4

F94L DNA Test – Available on Sale Day.

Protoporphyrin Test – Available on Sale Day.

Breeding – French Pure Limousin.

LE MARTRES PIERROT (LEMFP41) (PN)
LE MARTRES ALDRICH (LEMFA48) (PN) (AA)
LE MARTRES NATALIE (LEMFN278) (PU)
Sire: LE MARTRES ELEAZOR (LEMFE57) (PN) (AA)
LE MARTRES WASHINGTON (LEMFW6) (PN)
LE MARTRES ZILLE (LEMZF43) (PU)
LE MARTRES RESOLVE (LEMFQ68) (PU)

FLEURI (IMFFP60) (PU)
LE MARTRES WASHINGTON (LEMFW6) (PN)
TOPAKI ALICE AP2 (TPKFE2) (PU)
Dam: LE MARTRES CURVES (LEMF128) (PU)
EDMOND CIM58 (IMFFN58) (PN)
LE MARTRES VANESSA (LEMFV09) (PU)
LE MARTRES RESOLVE (LEMFQ68) (PU)*Purchaser:* \$

15**LE MARTRES KELTY****Tattoo:** LEM2K20 **Born:** 12/10/2014 **% FB:** 58.15**Dark Red & Polled.**

Birth Weight 35-40 kg.

On 11.12.15 at 14.0 months –
Liveweight 540 kg,
Rib Fat 6.0 mm, Rump Fat 7.0 mm,
Intramuscular Fat (IMF) 2.9%,
Eye Muscle Area (EMA) 105.98 sq.cm,
NEG: Carcase Merit Index (CMI) 2533.3 - Super Elite rating!!
NEG CMI/Age 181.3

F94L DNA Test – Available on Sale Day.

Protoporphyrin Test – Available on Sale Day.

Breeding – Grade 2 Limousin.

LE MARTRES BLACK WALMSLEY (LEM3W25) (P) (B) (PN) (AA)
LE MARTRES ATLAS (LEM3A34) (PU)
MARUNGI PBT P K 116 (PBTPK116) (PU)
Sire: LIMOGES ESUMENT (LIM3E22) (P) (PN) (AC)
LE MARTRES PIERROT (LEMFP41) (PN)
LE MARTRES XHANNY (LEMPX28) (P) (PU)
LE MARTRES BLACK TAPIOCA (LEMP45) (B) (PU)

LE MARTRES ANGUS (LEM0X203)
LE MARTRES MARTY (LEM1A39) (B) (PN)
LE MARTRES XADIS (LEMFX26) (PU)
Dam: LE MARTRES STRAWBERRY EVELYN (LEM1E09) (PU)
LE MARTRES SHORTHORN (LEM0S01) (PU)*Purchaser:* \$

16**LE MARTRES BLACK KHAN****Tattoo:** LEMPK69 **Born:** 22/10/2014 **% FB:** 90.10**Black & Polled.**

Birth Weight 35-40 kg.

On 11.12.15 at 13.5 months –

Liveweight 520 kg,

Rib Fat 6.0 mm, Rump Fat 6.0 mm,

Intramuscular Fat (IMF) 2.6%,

Eye Muscle Area (EMA) 101.55 sq.cm,

NEG: Carcase Merit Index (CMI) 2444.6 - Super Elite rating!!

NEG CMI/Age 180.5

F94L DNA Test – Available on Sale Day.

Protoporphyrin Test – Available on Sale Day.

Breeding - Purebred Limousin.

LE MARTRES BLACK WALMSLEY (LEM3W25) (P) (B) (PN) (AA)
LE MARTRES ATLAS (LEM3A34) (PU)
MARUNGI PBT P K 116 (PBTPK116) (PU)
Sire: LIMOGES ESUMENT (LIM3E22) (P) (PN) (AC)
LE MARTRES PIERROT (LEMFP41) (PN)
LE MARTRES XHANNY (LEMPX28) (P) (PU)
LE MARTRES BLACK TAPIOCA (LEMP45) (B) (PU)

LE MARTRES VALENTINO (LEMFV37) (PN)
LE MARTRES BLACK ANTONIO (LEMPA100) (P) (B) (PN) (AA)
WHITE LAKES MEANT FOR LOVE (WLPM24) (P) (B) (PU)
Dam: LE MARTRES BLACK DULCIE (LEMPD110) (P) (B) (PU)
LE MARTRES BLACK SAMPSON (LEMP566) (P) (B) (PU)
LE MARTRES YERRI (LEMPY04) (P) (PU)
LE MARTRES PETULA (LEM1N296) (PU)

Purchaser: \$

17**LE MARTRES KANGA****Tattoo:** LEMPK23 **Born:** 30/09/2014 **% FB:** 91.10**Apricot & Polled.**

Birth Weight 35-40 kg.

On 11.12.15 at 14.4 months –

Liveweight 545 kg,

Rib Fat 5.0 mm, Rump Fat 6.0 mm,

Intramuscular Fat (IMF) 3.4%,

Eye Muscle Area (EMA) 96.60 sq.cm,

NEG: Carcase Merit Index (CMI) 2582.5 - Super Elite rating!!

NEG CMI/Age 179.8

F94L DNA Test – Available on Sale Day.

Protoporphyrin Test – Available on Sale Day.

Breeding - Purebred Limousin.

LE MARTRES BLACK WALMSLEY (LEM3W25) (P) (B) (PN) (AA)
LE MARTRES ATLAS (LEM3A34) (PU)
MARUNGI PBT P K 116 (PBTPK116) (PU)
Sire: LIMOGES ESUMENT (LIM3E22) (P) (PN) (AC)
LE MARTRES PIERROT (LEMFP41) (PN)
LE MARTRES XHANNY (LEMPX28) (P) (PU)
LE MARTRES BLACK TAPIOCA (LEMP45) (B) (PU)

LE MARTRES SAMPSON (LEMP566) (P) (B) (PU)
LE MARTRES BLACK XCALIBRE (LEMPX19) (B) (PN)
LE MARTRES SANDRA (LEMP55) (PU)
Dam: LE MARTRES CHARYL (LEMP95) (PU)
LE MARTRES BLACK REBEL (LEM3Q40) (P) (B) (PN)
LE MARTRES BLACK TRIESTE (LEMP53) (P) (B) (PU)
MARUNGI H65 (PBTPH65) (PU)

Purchaser: \$

18**LE MARTRES BLACK KERIN****Tattoo:** LEMPK63 **Born:** 20/10/2014 **% FB:** 90.90**Black & Scurred.**

Birth Weight 35-40 kg.

On 11.12.15 at 13.7 months –

Liveweight 475 kg,

Rib Fat 5.0 mm, Rump Fat 7.0 mm,

Intramuscular Fat (IMF) 2.8%,

Eye Muscle Area (EMA) 103.67 sq.cm,

NEG: Carcase Merit Index (CMI) 2443.6 - Super Elite rating!!

NEG CMI/Age 178.2

F94L DNA Test – Available on Sale Day.

Protoporphyrin Test – Available on Sale Day.

Breeding - Purebred Limousin.

LE MARTRES BLACK WALMSLEY (LEM3W25) (P) (B) (PN) (AA)
LE MARTRES ATLAS (LEM3A34) (PU)
MARUNGI PBT P K 116 (PBTPK116) (PU)
Sire: LIMOGES ESUMENT (LIM3E22) (P) (PN) (AC)
LE MARTRES PIERROT (LEMFP41) (PN)
LE MARTRES XHANNY (LEMPX28) (P) (PU)
LE MARTRES BLACK TAPIOCA (LEMP45) (B) (PU)

LE MARTRES VALENTINO (LEMFV37) (PN)
LE MARTRES BLACK ANTONIO (LEMPA100) (P) (B) (PN) (AA)
WHITE LAKES MEANT FOR LOVE (WLPM24) (P) (B) (PU)
Dam: LE MARTRES BLACK DEIRDRE (LEMPD71) (P) (B) (PU)
LE MARTRES BLACK REBEL (LEM3Q40) (P) (B) (PN)
LE MARTRES BLACK TARA (LEMP156) (P) (B) (PU)
LE MARTRES NAUTI (LEMPN295) (PU)

Purchaser: \$

19**LE MARTRES BLACK KERR****Tattoo:** LEM3K22 **Born:** 23/10/2014 **% FB:** 80.50**Black & Scurred.**

Birth Weight 35-40 kg.

On 11.12.15 at 13.6 months –
Liveweight 510 kg,
Rib Fat 6.0 mm, Rump Fat 7.0 mm,
Intramuscular Fat (IMF) 2.7%,
Eye Muscle Area (EMA) 103.16 sq.cm,
NEG: Carcase Merit Index (CMI) 2391.8 - Super Elite rating!!
NEG CMI/Age 175.7

F94L DNA Test – Available on Sale Day.

Protoporphyrin Test – Available on Sale Day.

Breeding – Grade 3 Limousin.

LE MARTRES BLACK WALMSLEY (LEM3W25) (P) (B) (PN) (AA)
LE MARTRES ATLAS (LEM3A34) (PU)
MARUNGI PBT P K 116 (PBTPK116) (PU)
Sire: LIMOGES ESUMENT (LIM3E22) (P) (PN) (AC)
LE MARTRES PIERROT (LEMFP41) (PN)
LE MARTRES XHANNY (LEMPX28) (P) (PU)
LE MARTRES BLACK TAPIOCA (LEMP45) (B) (PU)

LE MARTRES VALENTINO (LEMFV37) (PN)
LE MARTRES ABBOTTA (LEMPA88) (P) (PU)
LE MARTRES SWANNIE (LEMP11) (P) (PU)
Dam: LE MARTRES BLUE EMMA (LEM2E06) (BL) (PU)
LE MARTRES BLACK REBEL (LEM3Q40) (P) (B) (PN)
LE MARTRES BLUE ROSEMARY (LEM1R732) (BL) (PU)
LE MARTRES P10 (LEMP10) (PU)

Purchaser: \$

20**LE MARTRES KERNAGHAN****Tattoo:** LEMPK76 **Born:** 23/10/2014 **% FB:** 94.25**Apricot & Scurred.**

Birth Weight 35-40 kg.

On 11.12.15 at 13.6 months –
Liveweight 510 kg,
Rib Fat 4.5 mm, Rump Fat 5.0 mm,
Intramuscular Fat (IMF) 3.1%,
Eye Muscle Area (EMA) 86.49 sq.cm,
NEG: Carcase Merit Index (CMI) 2387.6 - Super Elite rating!!
NEG CMI/Age 175.4

F94L DNA Test – Available on Sale Day.

Protoporphyrin Test – Available on Sale Day.

Breeding - Purebred Limousin.

LE MARTRES BLACK WALMSLEY (LEM3W25) (P) (B) (PN) (AA)
LE MARTRES ATLAS (LEM3A34) (PU)
MARUNGI PBT P K 116 (PBTPK116) (PU)
Sire: LIMOGES ESUMENT (LIM3E22) (P) (PN) (AC)
LE MARTRES PIERROT (LEMFP41) (PN)
LE MARTRES XHANNY (LEMPX28) (P) (PU)
LE MARTRES BLACK TAPIOCA (LEMP45) (B) (PU)

LE MARTRES VALENTINO (LEMFV37) (PN)
LE MARTRES BLACK ANTONIO (LEMPA100) (P) (B) (PN) (AA)
WHITE LAKES MEANT FOR LOVE (WLPM24) (P) (B) (PU)
Dam: LE MARTRES BLACK DEE (LEMPD70) (B) (P)
LE MARTRES PIERROT (LEMFP41) (PN)
LE MARTRES ANNA (LEMPA16) (PU)
LE MARTRES VEGA (LEMPV11) (PU)

Purchaser: \$

21**LE MARTRES KELLY****Tattoo:** LEMPK58 **Born:** 10/10/2014 **% FB:** 91.03**Apricot & Polled.**

Birth Weight 35-40 kg.

On 11.12.15 at 14.0 months –
Liveweight 475 kg,
Rib Fat 5.0 mm, Rump Fat 6.0 mm,
Intramuscular Fat (IMF) 2.8%,
Eye Muscle Area (EMA) 99.82 sq.cm,
NEG: Carcase Merit Index (CMI) 2445.4 - Super Elite rating!!
NEG CMI/Age 174.2

F94L DNA Test – Available on Sale Day.

Protoporphyrin Test – Available on Sale Day.

Breeding - Purebred Limousin.

LE MARTRES VALENTINO (LEMFV37) (PN)
LE MARTRES BLACK ANTONIO (LEMPA100) (P) (B) (PN) (AA)
WHITE LAKES MEANT FOR LOVE (WLPM24) (P) (B) (PU)
Sire: LE MARTRES BLACK EDBERT (LEMPE24) (B) (P) (PN) (AA)
LE MARTRES PIERROT (LEMFP41) (PN)
LE MARTRES XCELLENCE (LEMPX09) (PU)
LE MARTRES SEPTEMBER (LEMP563) (PU)

LE MARTRES ATLAS (LEM3A34) (PU)
LE MARTRES DALEY (LEM2D9) (P) (PN) (AA)
LE MARTRES SUCROSE (LEM2S75) (P) (PU)
Dam: LE MARTRES BLACK FLANNERY (LEM2F35) (P) (B) (PU)
LE MARTRES BLACK WALMSLEY (LEM3W25) (P) (B) (PN) (AA)
LE MARTRES BLACK ASHLEE (LEMPA19) (P) (B) (PU)
LE MARTRES BLACK RIBBON (LEMPR52) (P) (B) (PU)

Purchaser: \$

22**LE MARTRES KESTREL****Tattoo:** LEM2K72 **Born:** 28/10/2014 **% FB:** 58.15**Dark Red & Polled.**

Birth Weight 35-40 kg.

On 11.12.15 at 13.4 months –
Liveweight 435 kg,
Rib Fat 5.0 mm, Rump Fat 5.0 mm,
Intramuscular Fat (IMF) 2.3%,
Eye Muscle Area (EMA) 95.73 sq.cm,
NEG: Carcase Merit Index (CMI) 2300.8 - Super Elite rating!!
NEG CMI/Age 171.1

F94L DNA Test – Available on Sale Day.

Protoporphyrin Test – Available on Sale Day.

Breeding – Grade 2 Limousin.

LE MARTRES BLACK WALMSLEY (LEM3W25) (P) (B) (PN) (AA)
LE MARTRES ATLAS (LEM3A34) (PU)
MARUNGI PBT P K 116 (PBTPK116) (PU)
Sire: LIMOGES ESUMENT (LIM3E22) (P) (PN) (AC)
LE MARTRES PIERROT (LEMFP41) (PN)
LE MARTRES XHANNY (LEMPX28) (P) (PU)
LE MARTRES BLACK TAPIOCA (LEMP45) (B) (PU)
LE MARTRES ANGUS (LEM0X203)
LE MARTRES MARTY (LEM1A39) (B) (PN)
LE MARTRES XADIS (LEMPX26) (PU)
Dam: LE MARTRES STRAWBERRY EVELYN (LEM1E10) (PU)
LE MARTRES SHORTHORN (LEM0S02) (PU)

Purchaser: \$

23**LE MARTRES KARSON****Tattoo:** LEMPK50 **Born:** 1/10/2014 **% FB:** 95.65**Apricot & Dehorned.**

Birth Weight 35-40 kg.

On 11.12.15 at 14.3 months –
Liveweight 535 kg,
Rib Fat 3.5 mm, Rump Fat 6.0 mm,
Intramuscular Fat (IMF) 2.1%,
Eye Muscle Area (EMA) 91.78 sq.cm,
NEG: Carcase Merit Index (CMI) 2398.6 - Super Elite rating!!
NEG CMI/Age 167.3

F94L DNA Test – Available on Sale Day.

Protoporphyrin Test – Available on Sale Day.

Breeding - Purebred Limousin.

LE MARTRES BLACK WALMSLEY (LEM3W25) (P) (B) (PN) (AA)
LE MARTRES ATLAS (LEM3A34) (PU)
MARUNGI PBT P K 116 (PBTPK116) (PU)
Sire: LIMOGES ESUMENT (LIM3E22) (P) (PN) (AC)
LE MARTRES PIERROT (LEMFP41) (PN)
LE MARTRES XHANNY (LEMPX28) (P) (PU)
LE MARTRES BLACK TAPIOCA (LEMP45) (B) (PU)
LE MARTRES WASHINGTON (LEMFW6) (PN)
LE MARTRES CHAD (LEMFC90) (PN) (AA)
LE MARTRES WALLA (LEMFW45) (PU)
Dam: LE MARTRES FANCHON (LEMFF49) (PU)
LE MARTRES WASHINGTON (LEMFW6) (PN)
LE MARTRES ALMOND (LEMFA13) (PU)
NARRABA YIPEE LIFE'S GREAT (KAGFY403) (PU)

Purchaser: \$

24**LE MARTRES KIM****Tattoo:** LEMFK81 **Born:** 30/10/2014 **% FB:** 100.00**Apricot & Dehorned.**

Birth Weight 35-40 kg.

On 11.12.15 at 13.4 months –
Liveweight 485 kg,
Rib Fat 6.0 mm, Rump Fat 6.0 mm,
Intramuscular Fat (IMF) 3.1%,
Eye Muscle Area (EMA) 91.39 sq.cm,
NEG: Carcase Merit Index (CMI) 2237.7 - Super Elite rating!!
NEG CMI/Age 167.2

F94L DNA Test – Available on Sale Day.

Protoporphyrin Test – Available on Sale Day.

Breeding – French Pure Limousin.

LE MARTRES PIERROT (LEMFP41) (PN)
LE MARTRES ALDRICH (LEMFA48) (PN) (AA)
LE MARTRES NATALIE (LEMFN278) (PU)
Sire: LE MARTRES ELEAZOR (LEMFE57) (PN) (AA)
LE MARTRES WASHINGTON (LEMFW6) (PN)
LE MARTRES ZILLE (LEMZF43) (PU)
LE MARTRES RESOLVE (LEMFO68) (PU)
FLEURI (IMFFP60) (PU)
LE MARTRES WASHINGTON (LEMFW6) (PN)
TOPAKI ALICE AP2 (TPKFE2) (PU)
Dam: LE MARTRES DIVINE (LEMFD06) (PU)
LE MARTRES PRINCE (LEMFP06) (PU)
LE MARTRES STEPHANIE (LEMFS40) (PU)
LE MARTRES JAYNELLE (LEMFJ215) (PU)

Purchaser: \$

25**LE MARTRES BLACK KENT****Tattoo:** LEM2K46 **Born:** 17/10/2014 **% FB:** 60.95**Black & Polled.**

Birth Weight 35-40 kg.

On 11.12.15 at 13.8 months –
Liveweight 475 kg,
Rib Fat 6.0 mm, Rump Fat 6.0 mm,
Intramuscular Fat (IMF) 2.4%,
Eye Muscle Area (EMA) 97.78 sq.cm,
NEG: Carcase Merit Index (CMI) 2256.9 - Super Elite rating!!
NEG CMI/Age 163.5

F94L DNA Test – Available on Sale Day.

Protoporphyrin Test – Available on Sale Day.

Breeding – Grade 2 Pure Limousin.

LE MARTRES VALENTINO (LEMFV37) (PN)
LE MARTRES BLACK ANTONIO (LEMPA100) (P) (B) (PN) (AA)
WHITE LAKES MEANT FOR LOVE (WLPM24) (P) (B) (PU)
Sire: LE MARTRES BLACK DRAKE (LEMPD89) (P) (B) (PN) (AA)
LE MARTRES VALENTINO (LEMFV37) (PN)
LE MARTRES ANABEL (LEMPA63) (PU) (AA)
ARKHADE FLEUR (ARKPN16) (PU)
LE MARTRES ANGUS (LEM0X203)
LE MARTRES MARTY (LEM1A39) (B) (PN)
LE MARTRES XADIS (LEMPX26) (PU)
Dam: LE MARTRES BLUE FANTAIL (LEM1F04) (BL) (PU)

LE MARTRES SHORTHORN (LEM0S03) (PU)

Purchaser: \$

26**LE MARTRES BLACK KAHN****Tattoo:** LEM3K01 **Born:** 20/09/2014 **% FB:** 80.25**Black & Polled.**

Birth Weight 35-40 kg.

On 11.12.15 at 14.7 months –
Liveweight 565 kg,
Rib Fat 7.0 mm, Rump Fat 7.5 mm,
Intramuscular Fat (IMF) 3.2%,
Eye Muscle Area (EMA) 101.42 sq.cm,
NEG: Carcase Merit Index (CMI) 2392.4 - Super Elite rating!!
NEG CMI/Age 162.8

F94L DNA Test – Available on Sale Day.

Protoporphyrin Test – Available on Sale Day.

Breeding – Grade 3 Pure Limousin.

LE MARTRES BLACK WALMSLEY (LEM3W25) (P) (B) (PN) (AA)
LE MARTRES ATLAS (LEM3A34) (PU)
MARUNGI PBT P K 116 (PBTPK116) (PU)
Sire: LIMOGES ESUMENT (LIM3E22) (P) (PN) (AC)
LE MARTRES PIERROT (LEMPF41) (PN)
LE MARTRES XHANNY (LEMPX28) (P) (PU)
LE MARTRES BLACK TAPIOCA (LEMP45) (B) (PU)
LE MARTRES ANGUS (LEM0X203) (P) (B) (PU)
LE MARTRES BLACK BUSBY (LEM1B128) (P) (B) (PN)
LE MARTRES ZILLA (LEMPZ44) (PU)
Dam: LE MARTRES BLACK EBBA (LEM2E18) (P) (B) (PU)
LE MARTRES VALENTINO (LEMFV37) (PN)
LE MARTRES CELENE (LEMPX54) (PU)
LE MARTRES UPRIGHT (LEMPU26) (PU)

Purchaser: \$

27**LE MARTRES KENNY****Tattoo:** LEMPK35 **Born:** 19/10/2014 **% FB:** 93.85**Apricot & Scurred.**

Birth Weight 35-40 kg.

On 11.12.15 at 13.7 months –
Liveweight 480 kg,
Rib Fat 6.0 mm, Rump Fat 6.0 mm,
Intramuscular Fat (IMF) 3.6%,
Eye Muscle Area (EMA) 84.73 sq.cm,
NEG: Carcase Merit Index (CMI) 2157.8 - Super Elite rating!!
NEG CMI/Age 157.0

F94L DNA Test – Available on Sale Day.

Protoporphyrin Test – Available on Sale Day.

Breeding - Purebred Limousin.

LE MARTRES BLACK WALMSLEY (LEM3W25) (P) (B) (PN) (AA)
LE MARTRES ATLAS (LEM3A34) (PU)
MARUNGI PBT P K 116 (PBTPK116) (PU)
Sire: LIMOGES ESUMENT (LIM3E22) (P) (PN) (AC)
LE MARTRES PIERROT (LEMPF41) (PN)
LE MARTRES XHANNY (LEMPX28) (P) (PU)
LE MARTRES BLACK TAPIOCA (LEMP45) (B) (PU)
LE MARTRES VALENTINO (LEMFV37) (PN)
LE MARTRES BLACK ANTONIO (LEMPA100) (P) (B) (PN) (AA)
WHITE LAKES MEANT FOR LOVE (WLPM24) (P) (B) (PU)
Dam: LE MARTRES DARA (LEMPD42) (PU)
LE MARTRES WARWICK (LEMPW18) (PN)
LE MARTRES ALSPICE (LEMPA58) (PU)
LE MARTRES SUGAR (LEMP54) (P) (PU)

Purchaser: \$

28**IVYROCK JASPER****Tattoo:** BHBPJ161 **Born:** 12/08/2013 **% FB:** 98.96**Apricot & Dehorned.**

Birth Weight 35-40 kg.

On 17.10.15 at 26.1 months –
Liveweight 746 kg,
Rib Fat 7.0 mm, Rump Fat 9.0 mm,
Intramuscular Fat (IMF) 3.5%,
Eye Muscle Area (EMA) 118.92 sq.cm,
NEG: Carcase Merit Index (CMI) 2995.8 - Super Elite rating!!
NEG CMI/Age 114.8

F94L DNA Test – Not Tested.

Protoporphyrin Test – Not Tested.

Breeding - Purebred Limousin.

DAUPHIN (IMFFH4715) (PN)
PATOCLÉ (IMFFU7968) (PU)
INDECISE (IMFFR386) (PU)
Sire: CYAN PO (IMFPC9678) (P) (PN) (AA)
TROTSKI (IMFFP9676) (P) (PU)
AFRIQUE (IMFPZ9677) (PU)
MIGNONNE (IMFFR9675) (PU)
GEANT (IMFFL217) (PN)
ARKHADE TITANIC (ARKFT5) ® (PN) (AA)
ECLIPSE (IMFFJ255) (PC)
Dam: IVYROCK EDNA (BHBPE62) (PU)
BILLABONG LANCELOT (BLBFL19) (PU)
IVYROCK U06 (BHB2U6) (PU)
IVYROCK L6 (BHB1L6) (PU)*Purchaser:* \$

29**IVYROCK JACKMAN****Tattoo:** BHBPJ172 **Born:** 9/9/13 **% FB:** 93.74**Apricot & Dehorned.**

Birth Weight 35-40 kg.

On 17.10.15 at 25.2 months –
Liveweight 588 kg,
Rib Fat 6.0 mm, Rump Fat 6.0 mm,
Intramuscular Fat (IMF) 2.9%,
Eye Muscle Area (EMA) 116.96 sq.cm,
NEG: Carcase Merit Index (CMI) 2939.1 - Super Elite rating!!
NEG CMI/Age 116.6

F94L DNA Test – Not Tested.

Protoporphyrin Test – Not Tested.

Breeding - Purebred Limousin.

DAUPHIN (IMFFH4715) (PN)
ARKHADE THESIS (ARKFT27) (R) (PU)
ARKHADE ADELE (ARKFP26) (PU)
Sire: IVYROCK FRENCHMAN (BHBFF83) (PU)
MILOU-MN (IMFFR8369) (PN) (AA)
IVYROCK CERISE (BHBFC11) (PU)
IVYROCK YVETTE (BHBFY8) (PU)
BILLABONG LANCELOT (BLBFL19) (PU)
IVYROCK BARNADO (BHBPB26) (PU)
IVYROCK YOLANDA (BHBPY2) (PU)
Dam: IVYROCK F86 (BHBPF86) (PU)
BILLABONG LANCELOT (BLBFL19) (PU)
IVYROCK W51 (BHB2W51) (PU)
IVYROCK T10 (BHB1T10) (PU)*Purchaser:* \$

30**IVYROCK KRUISER****Tattoo:** BHBPK186 **Born:** 28/2/2014 **% FB:** 96.87**Apricot & Dehorned.**

Birth Weight 35-40 kg.

On 17.10.15 at 19.6 months –
Liveweight 584 kg,
Rib Fat 5.0 mm, Rump Fat 5.0 mm,
Intramuscular Fat (IMF) 2.3%,
Eye Muscle Area (EMA) 116.21 sq.cm,
NEG: Carcase Merit Index (CMI) 2999.2 - Super Elite rating!!
NEG CMI/Age 153.0

F94L DNA Test – Not Tested.

Protoporphyrin Test – Not Tested.

Breeding - Purebred Limousin.

DAUPHIN (IMFFH4715) (PN)
ARKHADE THESIS (ARKFT27) (R) (PU)
ARKHADE ADELE (ARKFP26) (PU)
Sire: IVYROCK FRENCHMAN (BHBFF83) (PU)
MILOU-MN (IMFFR8369) (PN) (AA)
IVYROCK CERISE (BHBFC11) (PU)
IVYROCK YVETTE (BHBFY8) (PU)
GEANT (IMFFL217) (PN)
ARKHADE TITANIC (ARKFT5) ® (PN) (AA)
ECLIPSE (IMFFJ255) (PC)
Dam: IVYROCK B32 (BHBPB32) (PU)
BILLABONG LANCELOT (BLBFL19) (PU)
IVYROCK W51 (BHB2W51) (PU)
IVYROCK T10 (BHB1T10) (PU)*Purchaser:* \$



LE MARTRES

LIMOUSIN STUD

Taking Delivery Of Your New Cattle - Bulls

To help your new cattle settle into their new property, the following points may be of assistance.

- * All Le Martres Limousin cattle have been grazed in large herds all of their lives, so they have always had plenty of companion animals, and never been alone.
- * It is a good idea to have mature cattle of your own in the stockyards for company for when your new cattle arrive. These cattle will provide company for the new cattle, and encourage them to settle in quicker, and get to know the lay-out of your stockyards/races/paddocks.
- * At Le Martres Limousin we handle our cattle quietly and confidently, we always show our cattle respect, and our cattle respect us. We generally use motorbikes and dogs to yard the cattle. And, work the cattle on foot and with dogs in the stockyards. The cattle are not familiar with horses.
- * We advise you to handle your new cattle quietly and with respect and they will settle into their new property and herd and will be easy to handle whenever the need arises.

At Delivery

- * At Le Martres Limousin we will work with you to ensure your newly purchased cattle are delivered safely, professionally and on time. We highly recommend Mr Joe Wilton as the nominated carrier.

During The Settling In Period

- * The majority of cattle have been grazed in a large herd.
- * Once unloaded, ensure the cattle have mature company and plenty of food and water.
- * Be aware it is a new environment for the cattle and, sometimes time in the yards with mature company and plenty of food and water may be required.
- * Do not box up bulls unfamiliar with each other – the majority of breakdowns/injuries are caused in the bull paddock when new bulls are directly added to an existing group of bulls.
- * Remember the pecking order scenario with other bulls – the newest addition into a bull paddock may receive a hard time for a while. Perhaps graze bulls in adjoining paddocks for some time before grazing together in the same paddock.
- * The bull(s) are used to being treated with respect and will respond accordingly to good management.

At Joining Time

- * For young bulls arrange a minimal number of cows/heifers to allow the bull(s) to learn to serve and work amongst the herd. Practice makes perfect!!!
- * Observe the bull(s) closely and regularly at the commencement of a joining period. This ensures you are aware of the bulls ability to serve, and you will get to know their behaviour and manners. Continuing to observe the bull(s) will increase the chances of you noticing if an accident has occurred and/or females in the herd are returning from service. In which case, the bull(s) can be removed and a back up bull(s) placed in the herd.
- * If using more than one bull in a herd it is advisable to combine a mature with a young bull in a team.
- * Do not mate bulls with horns and polled/dehorned bulls together. Single mating is preferred.

After Joining Time

- * Try and combine younger bulls in the bull paddock, and graze older bulls in a separate herd in order to avoid injury to the older bulls.
- * Offer all bulls plenty of food and water in order to recover body weight and regain optimal health and nutrition.

Le Martres Limousin Semen and Embryos For Sale

SEMEN:

Unlicensed Semen stored at Agrigene's Centre, Wangaratta, Victoria.

Le Martres Mozart	French Pure	\$50.00 per straw	(Packages available)
Le Martres Pierrot	French Pure	\$50.00 per straw	(Packages available)
Le Martres Valentino	French Pure	\$50.00 per straw	(Packages available)
Le Martres Warwick	French Pure	\$50.00 per straw	(Packages available)
Le Martres Washington	French Pure	\$50.00 per straw	(Packages available)
Le Martres Chad	French Pure	\$50.00 per straw	(Packages available)
Le Martres Caesar	French Pure	\$50.00 per straw	(Packages available)
Le Martres Darby	French Pure	\$50.00 per straw	(Packages available)
Le Martres Eleazor	French Pure	\$50.00 per straw	(Packages available)
Le Martres Delwyn	Aust. Pure (Apr & Horn)	\$50.00 per straw	(Packages available)
Le Martres Governor	Aust. Pure (Apr & Poll)	\$50.00 per straw	(Packages available)
Le Martres Black Walmsley	Aust. Pure (Blk & Poll)	\$50.00 per straw	(Packages available)
Le Martres Black Worsley	Aust. Pure (Blk & Horn)	\$50.00 per straw	(Packages available)
Le Martres Black Xcalibre	Aust. Pure (Blk & Horn)	\$50.00 per straw	(Packages available)
Le Martres Black Xtreme	Aust. Pure (Blk & Poll)	\$50.00 per straw	(Packages available)
Le Martres Black Antonio	Aust. Pure (Blk & Poll)	\$50.00 per straw	(Packages available)
Le Martres Black Drake	Aust. Pure (Blk & Poll)	\$50.00 per straw	(Packages available)
Le Martres Black Edbert	Aust. Pure (Blk & Poll)	\$50.00 per straw	(Packages available)
Le Martres Daley	Grade 2 (Apr & Poll)	\$50.00 per straw	(Packages available)
Le Martres Ebden	Grade 2 (Apr & Scur)	\$50.00 per straw	(Packages available)
Le Martres Blue Hercules	Grade 1 (Blue & Poll)	\$50.00 per straw	(Packages available)
Le Martres Red Henry	Grade 1 (Dark Red & Poll)	\$50.00 per straw	(Packages available)
Limoges El Bulli	Aust. Pure (Blk & Poll)	\$50.00 per straw	(Packages available)
Limoges Esument	Aust. Pure (Apr & Poll)	\$50.00 per straw	(Packages available)
Sundowner Toro	French Pure	\$50.00 per straw	(Packages available)
Sundowner Xavier	French Pure	\$50.00 per straw	(Packages available)

Licensed Semen stored at Agrigene's Centre, Wangaratta, Victoria.

Prices and Availability on application:

Aznavour Charles	Frappeur	Refstrup Tabias
B. Delors	Fripon 1	Shatton Pedro
Black Ox Junior	Goldenview Revamp	Streamville Colin
Burton Ozy	Hampton Filin	Sundowner Fancy
Daget	Hampton Valiant	Tamis
Earthquake 93,	Harvest Rajah	Tuts Treasure
Email	Hengrave Trooper	Tanhill Premier
Echo	Hvidbjerg Adam	Tanhill Tigre
Esbrouffeur	Labyllé	Tanhill Rumpus
Famous	Leonay Oscar	Tanhill Sogood
Fantastique	Little London Faceur	Tanhilms Claus
Fieldhouse Pilate	Lukas Sandie	White Lakes Black Polled Gamlber
Filou	Marden Umph	White Lakes Yuletide
Fixe	Oakley Sirius	Wilkesly Sampson
Flash	Petard	
Foxtrot	Prince of Paris	

EMBRYOS:

Embryo's stored at Agrigene's Centre, Wangaratta, Victoria.

Prices and Availability on application:

Selection of French Pure embryo's sired by, Framoire King Blonde Matching Fan Fan Tanhill Rumpus Wintershall Funamble	Selection of Black Polled Australian Pure embryo's by, Lukas Sandie Topaki Nero White Lakes Black Opal
---	---



LE MARTRES
LIMOUSIN STUD

THURSDAY, APRIL 4TH 2016 GENOMIX BEEF GENETIC SALE

www.genomix.com.au

Le Martres Limousins has been accepted as a vendor into the 2nd International Expose of Australian Beef Genetics.

The Sale will involve at least 17 different breeds of Beef Cattle.

As vendors we offer 4 lots, involving embryo, semen and flush packages from our top performing cow & bull families.

On April 4th at the Toowoomba Showgrounds QLD the sale will be conducted to both a Australian and International audiences.

This will be an exciting opportunity to showcase the best of the Australian Beef Industry to the world.

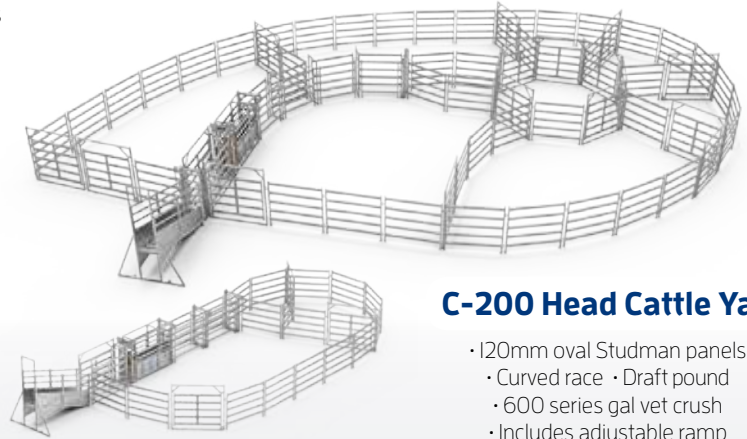
Watch out for this exciting opportunity.



Give us a call now! **1800 65 77 66**

1200 Series HD Crush

- Hot dipped galvanised
- Patented anti-rattle latches
- Single parallel squeeze
- Super duty head bail
- Full vet section
- Three unique side doors for easy animal access



C-200 Head Cattle Yard

- 120mm oval Studman panels
- Curved race
- Draft pound
- 600 series gal vet crush
- Includes adjustable ramp
- Total area 398m²

C-50 Head Cattle Yard

- Yardsmen oval 71mm oval panels
- Includes adjustable ramp
- 600 series vet crush
- Total area 110m



Forced Tub and Race

- Hot dipped galvanised
- Curve force and race system
- Fully adjustable for all cattle sizes
- Available in 120 - 360 degree tubs or without race



Automatic 3 Way Draft

- Heavy duty galvanised construction
- Access gates with slam latches
- Pneumatically driven from crush control panel
- Designed to work with Clipex HD series pneumatic crushes

Don't waste time tying wire to fence posts
Do it right and clip them in!



Clipex® Fence Posts



Clipex® Wire



Clipex® End Assemblies

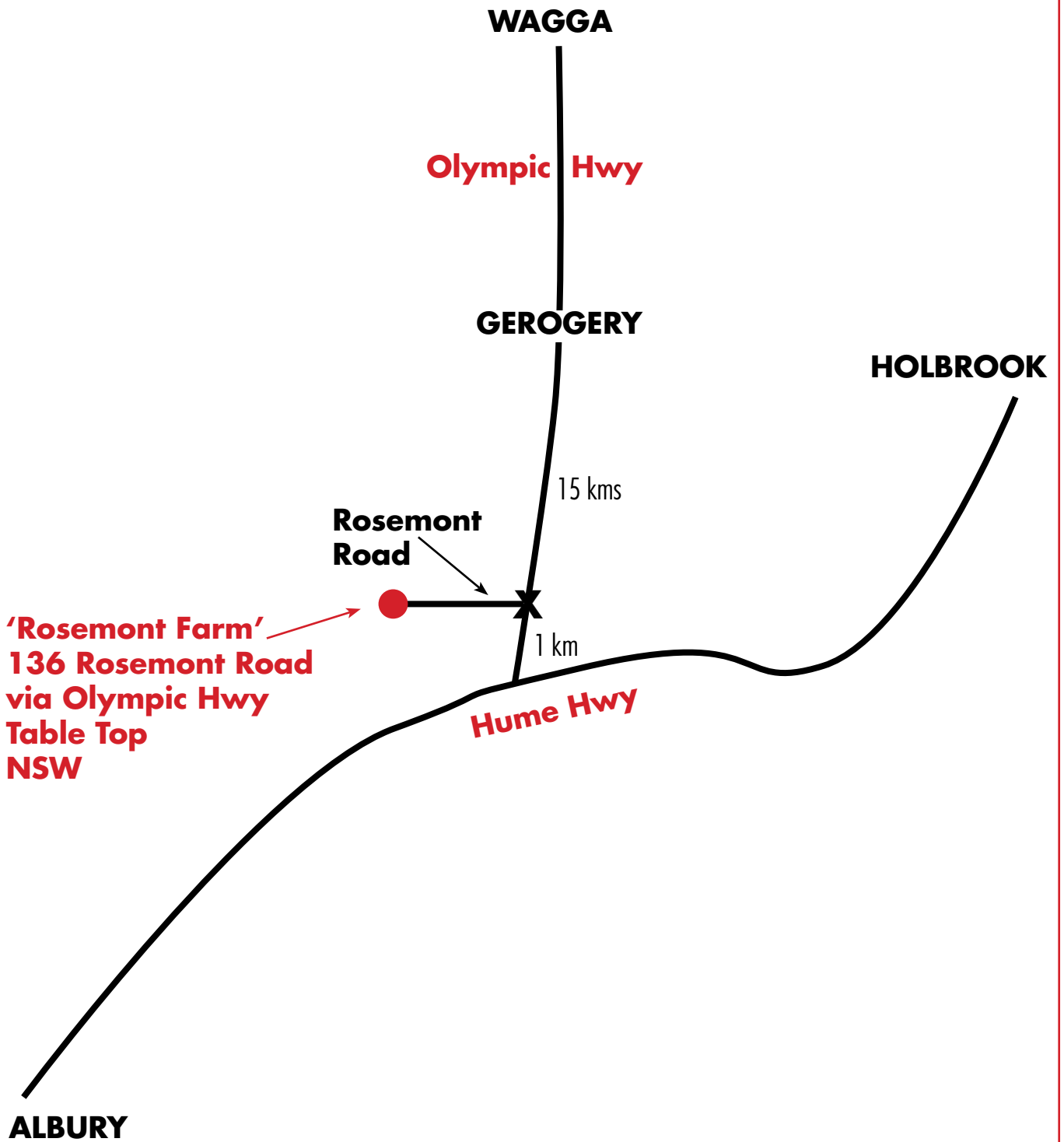


New S-fence Wire!

SAFE - SECURE - SIMPLE
Fabricated in Australia
Introductory pricing available!

NOTES

LOCATION MAP





Stud Sire - Limoges El Bulli E16



LE MARTRES
LIMOUSIN STUD