

**Limousin Cattle proven to perform in Australian conditions**

# **Le Martres Limousins**

# **2014**

# **Bull Sale**



**Friday 28th February, 2014**

**On Property "Rosemont Farm",  
Table Top, NSW**

**View cattle on:  
[www.lemartreslimousins.com](http://www.lemartreslimousins.com)**



**LE MARTRES**  
LIMOUSIN STUD



# LE MARTRES

LIMOUSIN STUD



**LOT 1**



**LOT 3**



**LOT 4**



**LOT 7**



**LE MARTRES**  
LIMOUSIN STUD

# 5<sup>th</sup> On Property Limousin Sale

45 Apricot & Black & Red Limousin  
Mature & Yearling Sires – with “Big Butts”

**Friday 28th February, 2014**

**Inspections commence at 11 am  
Helmsman Sale commences at 1 pm  
with phone bidding available.**

**Location:** 136 Rosemont Road, Table Top, NSW.  
**Directions:** Just 2 kms north on the Olympic Highway after leaving the intersection of the Olympic & Hume Highways, turn left into Rosemont Road.

**Le Martres Limousin Stud – The Martin Family**

**Stud Manager:**

Leon & Sandra Martin  
Ph.: 02 6043 1328  
Mob.: 0428 577 138

Ian & Val Martin  
Ph.: 02 6043 1070  
Mob.: 0429 162 211

Ron Leary  
Ph.: 03 5728 6512  
Mob.: 0417 506 742

*Morning Tea and Luncheon at ‘Rosemont Farm’*

**Agents:**



**GTSM**  
Glasser Total Sales Management

Michael Glasser  
0403 526 702



Mike Scollard - 0408 578 059  
John Lang - 0408 576 446



# LE MARTRES

LIMOUSIN STUD

Dear Fellow Beef Producers

Welcome to the fifth Le Martres Limousins Bull Sale.

It is with great pleasure we offer beef producers another industry focused set of both mature & yearling bulls. This year we are making available both mature/rising two year old and yearling bulls in order to cater for those looking for bulls ready to work in the near future.

Again, the overall bull team just seems to get better and better for a whole range of reasons.

We urge you to read on and find out why.

For those of you whom know our cattle, we produce and grow out cattle under grass feed conditions. We believe our cattle will therefore move and readily perform well in a wide range of environments.

Our Limousin cattle are bred to perform in Australian conditions for your benefit.

Established in 1988, Le Martres Limousin proudly breeds Limousin cattle with exceptional quality carcasses, a range of coat colors (apricot, black, red, blue & strawberry) and an increasing selection of which are polled.

The stud has a within herd genetic selection program based on 15 years of utilising the services of the 'Natural Ecosystems Group' (NEG) of Albury, NSW. This service utilises objective measurement - weighing, live scanning and indexing technology to identify cattle of superior 'meat yield and quality'.

The many benefits are,

- higher carcass yields
- better balanced carcasses, ie. meat/fat/bone ratio
- greater carcass uniformity across progeny.
- higher value heifer progeny
- higher meat content (> 60% dressing percentage)
- higher 'Carcass Merit Index' post weaning for high meat performance (NEG; CMI >2000 @ 12 months, or NEG; CMI/mth > 166.67)
- adequate fat cover (>3 mm & < 10 mm) for softness and ease of finishing
- higher marbling (> 2.0 IMF) for meat quality.

Young herd sires are selected from within the herd on the basis of,

- born early & relatively small (ensuring shorter gestation & small birth size)
- high 'Carcass Merit Index' post weaning
- bred from superior milk performance dams
- structurally correct
- carrying large testicles well suspended away from the body.

We continue to place an great emphasis on cow families and, sons bred from these families.

Our clients are achieving great success by retaining the F1 & F2 heifers from their commercial herds and breeding on with these cattle. Also, our Limousin cattle are proving ideal for feed-lot finishing, especially for domestic trade orders.

We remain dedicated to objectively improving the meat yield & quality of our cattle for your benefit.

Yours in Limousin,  
The Martin Family.



Leon & Sandra Martin



Ian & Val Martin

# SALE INFORMATION

## The 'Selling System'

The Helmsman Sale will be conducted in the 'Woolshed' which is located in close proximity to the stockyards. Mr Michael Glasser of 'GTSM' will conduct the sale. There will be no sale ring, or selling of the bulls through a sale ring.

## Buyers Orders and Phone Link Up

Mobile phones operate successfully at the Woolshed (venue). We encourage potential buyers who are unable to attend the sale to make arrangements with the vendor or the listed Sale Agents during the sale to place bids. Please make arrangements at least 48 hours prior to the Sale Day.

## Video Link Up

There will be no video link up this year. Last year proved too problem-matic with many viewers experiencing viewing problems due to poor internet service in their locality. We may choose to resume such a service in the future.

## Inspection

Bulls can be inspected prior to the sale by arrangement with the vendor or Selling Agents. This gives us the opportunity to assist in selection of the most suitable genetics for your requirements.

## Guarantee

Bulls - We guarantee to ensure all clients achieve one crop of calves from each bull purchased. The bulls have been selected for structural soundness. The bulls have been raised on a grass fed system which has proven successful over time to ensure our bulls/females are fertile. In the event of infertility, we (the vendor) guarantee (without expenses, interest, costs and damages) if any bull proves to be totally infertile or totally incapable of natural service, provided it is not caused by an injury or disease contracted since leaving the sale, to replace the bull with a bull of comparable value. Any claim for a bull must be lodged within 6 months of the date of the Sale direct with the vendor, and be accompanied with a relevant Veterinary Certificate. A claim will be considered on its merits by us (the vendor) and our Veterinarian.

## Health

TB and Brucellosis free herd and stock are free to move anywhere in Australia. JD status is Protected. The bulls have been vaccinated previously with Vaxall 5 in 1 and Pestigard.

## Tattoos

Certain bulls have an industry tattoo denoting the purity of '1', '2' or '3'. In explanation, the Le Martres Limousins Breeding Program selected young Herd Sires to introduce the traits of black coat color and polledness into the herd. Many of these sale bulls are of higher purity than these tattoos denote, and we ask you to take more notice of the percentage purity listed in the catalogue.

## Objective Measurement

The mature bulls have been weighed, carcass scanned and indexed as rising two year olds in October 2013. The yearling bulls have been weighed, carcass scanned and indexed as yearlings in December 2013. This practice is meaningful in that it provides the buyer with information of the body type of the calves these bulls are likely to produce when their calves are of a similar age. Over time, this approach has proven to be reliable and, very well received by our clients. This information is provided in the catalogue for your reference. The bulls will be weighed again just prior to the Sale and, have a scrotal measurement taken, and this information will be provided in a supplementary sheet.

## Semen Collection

Each bull is being sold with 100% possession, marketing and ownership. Le Martres Limousins is reserving the right, if desired in the future, to collect semen from any bull for our own in herd use only. All costs associated with the collection of semen will be met by Le Martres Limousins, and collection would be done at a time suitable to the purchaser. The purchaser would have total control of the bull, including any marketing of the physical bull or semen.

## Notice to all Buyers

### Pre On Line Registration

1. All Buyers can prior to arriving go online at [www.gtsm.net.au](http://www.gtsm.net.au) and register for this sale.

### Sale Rebates

1. All Buyers who settle their purchases on the day by cheque/credit card will receive a 2% rebate.

## Notice to all Agents

### Pre On Line Registration

1. Agents can go online at [www.gtsm.net.au](http://www.gtsm.net.au) and register their Buyers before escorting them to the sale.

### Sale Rebates

1. All Agents attending the Sale and whom fully complete & sign the Registration Form and settle on their clients behalf will receive a 5% rebate on any of their clients purchases.
2. All Agents settling on their clients behalf only will receive a 1% rebate on any of their clients purchases.

## Personal Transport To And From Sale Venue

We can arrange transport to and from the sale venue. Please contact the Agents of the Martin Family to make arrangements at least 48 hours prior to the Sale Day.

## Air Facilities

Good airport facilities are available at Albury and Wagga Wagga. And private planes may also use Holbrook.

## Accommodation

We recommend you contact the Motels direct:

### Thurgoona Country Club Resort

1 Evesham Place,  
THURGOONA  
Ph: (02) 60431666

### Chifley Albury

Cnr Dean & Elizabeth Streets,  
ALBURY  
Ph: (02) 60215366  
[reservations.albury@chifleyhotels.com](mailto:reservations.albury@chifleyhotels.com)

## Catering

Refreshments for morning tea and a light lunch will be available on Sale Day.

## Insurance

We encourage you to insure your purchases. All care will be taken to the conclusion of the sale but thereafter it is the purchaser's responsibility for any injury or death. We recommend you insure all purchases on the day with GTSM, agent for CGU Insurance, and insure for at least the first joining period.

## Livestock Delivery

Joe Wilton is the vendor's nominated carrier, and he will be in attendance - Joe will help co-ordinate all transport arrangements for your new purchasers with Agents GTSM.

## Important Notices

1. The vendor will not be responsible for any errors or omissions in this catalogue.
2. The Selling Agent, its members, subsidiary or related corporations, officers, agents and employees for themselves and for those for whom they act while exercising due care provide all information without responsibility and give no guarantee whatsoever as to its accuracy. All persons who attend the sale do so entirely at their own risk and the Selling Agent, its members, subsidiary or related corporations, officers, agents and employees and its principals, for themselves and for those for whom they act, do not assume or accept any responsibility or liability of whatever nature for any injury or damage whatsoever which may occur.





# LE MARTRES

LIMOUSIN STUD

## “Le Martres Limousins Bulls” = “Cash Flow Solutions”.

Le Martres Limousin bulls maximize the opportunity to achieve the best market prices on offer.

2013 has been proven to be another great year for ‘Le Martres Limousins’ and our clients.

Le Martres Limousins is widely known for adopting objective measurement to improve the carcass yield and quality of their Limousin Beef Cattle. This process is reaping financial rewards for their clients and the greater Beef Industry.

A ‘weigh & Scan’ operation conducted on the 9.12.13 on the 2012/13 drop of yearling sires, which will appear in the 2014 Bull Sale, provided the following averaged results and, a comparison with the previous 2011/12 drop showed the following exciting trends –

Trait:	2012/13 Bulls Av. Result:	Comparison With 2011/12 Bulls:
* Age	13.7 months	0.0%
* Live Weight	513 kg	-1.1%
* Rib Fat	4.6 mm	+2.2%
* Rump Fat	5.1 mm	-3.7%
* Marbling/IMF	2.4 %	+9.1%
* EMA (Eye Muscle Area)	101.28 cm <sup>2</sup>	-5.4%
* NEG; Carcass Merit Index	2592.2 (Super Elite)	-1.6%

We are very pleased with the 2012/13 results given the difficult Spring ‘13 weather conditions. We believe the 2012/13 cattle have performed very well despite not matching the 2011/12 results. Again, we believe these results demonstrate the Le Martres Limousins within herd genetic selection program is producing cattle with better balanced carcasses and, cattle able to perform in Australian grassland conditions.

## Success Stories

### 2013 Albury Show Beef Carcass Competition

Congratulations to Mrs Margaret Pierce of ‘Belangalo Park’, Gerogery NSW for winning for a second time the Champion Carcass with her commercial Limousin steer bred exclusively with ‘Le Martres Limousins’ genetics.





# LE MARTRES

LIMOUSIN STUD

## Le Martres Limousins Debuts at 2013 Royal Melbourne Show Beef Carcase Competition

The Martin Family under the guidance of Stud Manager Mr Ron Leary of Stanley VIC made their debut at Royal Melbourne Show by entering three steers in the 2013 competition and working in conjunction with local schools. St Pauls College of Walla Walla headed by Livestock Manager Mr Wayne Whale backgrounded two steers, a purebred Limousin and a Red Poll x Limousin and, Rutherglen High School headed by Livestock Manager Mr Ronald Webb backgrounded the third purebred Limousin steer.

For the last 15 years, the Martin Family have been using Objective Measurement under the guidance of 'Natural Ecosystems Group' of Albury NSW as a breeding and selection tool. And, have successfully been able to produce Beef Cattle with dressing percentage of up to 68%, based on a curfewed LWT.

The Martin Family and Mr Leary were very keen to step out at Royal Melbourne Show and see how their cattle 'measured up' against the Beef Industry.

Mr Leon Martin, representing the Martin Family, and Mr Leary attended the 2013 Show and watched the judging of live steer 'On The Hoof'. The purebred Limousin steer exhibited by Rutherglen High School was judged fourth out of 63 entries in the Heavy Domestic class. The other steers were not successful in gaining a placing 'On The Hoof'.

Then, the next day, all of the steers were trucked away to a nearby JBS Abattoir and slaughtered and during the following week the carcasses were professionally assessed. Whilst the steers did not win their Heavy Domestic class, the Martin Family and Mr Leary were delighted with how the steers met the carcass standards set internally for use in the Le Martres Limousin Stud.

The purebred Limousin steer Tag No.198 exhibited by Rutherglen High School recorded an Eye Muscle Area score of 117 sq. cm. In the Heavy Domestic class of 63 entries the next highest was 108 sq. cm and the average was 84 sq.cm. This steer absolutely excelled in the 'meat/EMA department', a clear winner by 8% individually and by 28% against the average and, importantly this result validates the adoption of 'Objective Measurement' within the stud.

The purebred Limousin steer Tag No.209, exhibited by St Pauls College and, depicted with the students on the front page of The Weekly Times, ranked 18th from 63 entries on overall Carcase Judging in the Heavy Domestic class. A pleasing result.



The Red Poll x Limousin steer Tag No.210, exhibited by St Pauls College recorded a Rib Fat of 8 mm and Rump Fat of 10 mm gaining maximum points in this sector of the Carcase Judging.





# LE MARTRES

LIMOUSIN STUD

## Objective Measurement Assessment – 10.10.13

Ranked by Tag No.

TAG No.	LWT (kg)	Rib Fat (mm)	Rump Fat (mm)	IMF (%)	EMA (cm <sup>2</sup> )	Carcase Merit Index (Vers.5):	NEG Rating:
<b>Mature Bulls:</b>							
G105	725	4.0	6.0	2.4	129.36	3539.3	Super Elite
G124	720	4.0	6.0	2.9	123.99	3487.3	Super Elite
G137	745	4.0	5.0	2.9	129.78	3741.3	Super Elite
G165	690	5.0	6.0	3.5	120.44	3361.7	Super Elite
G167	705	5.0	5.0	3.0	110.88	3191.7	Super Elite
H05	700	4.0	7.0	3.2	132.59	3598.8	Super Elite
H11	695	4.0	5.0	2.4	119.01	3349.1	Super Elite
H12	655	5.0	8.0	3.9	126.10	3312.7	Super Elite
<i>Average:</i>	<i>705</i>	<i>4.5</i>	<i>6.3</i>	<i>3.0</i>	<i>124.73</i>	<i>3419.0</i>	

## Objective Measurement Assessment – 9.12.13

Ranked by Tag No.

TAG No.	LWT (kg)	Rib Fat (mm)	Rump Fat (mm)	IMF (%)	EMA (cm <sup>2</sup> )	Carcase Merit Index; Vers. 5:	NEG Rating:
<b>Junior Bulls:</b>							
H15	505	5.0	5.0	2.5	97.02	2477.2	Super Elite
H17	490	4.0	5.0	1.9	94.69	2398.9	Super Elite
H19	500	5.0	5.0	2.6	97.78	2500.0	Super Elite
H22	475	5.0	5.0	2.6	97.14	2443.4	Super Elite
H25	520	5.0	5.0	1.9	104.95	2587.1	Super Elite
H26	525	5.0	5.0	2.2	101.33	2561.0	Super Elite
H28	505	4.0	5.0	2.4	101.18	2638.5	Super Elite
H37	520	5.0	6.0	2.9	102.80	2601.3	Super Elite
H41	495	4.0	4.0	2.3	112.04	2928.4	Super Elite
H42	490	4.0	4.0	2.6	97.81	2654.7	Super Elite
H45	495	4.0	4.0	1.9	97.02	2543.5	Super Elite
H48	490	4.0	4.0	2.3	89.91	2439.0	Super Elite
H52	475	4.0	4.0	1.7	88.09	2286.1	Super Elite
H54	505	5.0	5.0	2.4	99.10	2507.8	Super Elite
H55	500	5.0	5.0	2.3	90.55	2298.9	Super Elite
H56	495	5.0	5.0	2.6	92.94	2386.2	Super Elite
H59	520	5.0	6.0	2.8	102.56	2581.6	Super Elite
H63	510	5.0	7.0	2.8	93.45	2280.9	Super Elite
H70	505	5.0	5.0	2.7	94.43	2450.3	Super Elite
H76	525	4.0	4.0	2.4	93.20	2584.8	Super Elite
H83	490	5.0	6.0	2.6	102.11	2491.4	Super Elite
H84	455	4.0	4.0	1.8	97.57	2472.9	Super Elite
H87	515	4.0	4.0	2.3	105.34	2816.8	Super Elite
H88	505	5.0	6.0	2.6	102.49	2525.3	Super Elite
H90	500	4.0	6.0	2.2	103.87	2573.7	Super Elite
H91	510	4.0	5.0	2.1	105.55	2698.1	Super Elite
H94	500	4.0	5.0	1.9	103.70	2611.6	Super Elite
H95	490	5.0	5.0	2.7	101.82	2585.5	Super Elite
H104	500	4.0	4.0	2.1	107.12	2800.8	Super Elite
H105	485	4.0	4.0	1.8	91.78	2398.0	Super Elite
H110	515	4.0	4.0	2.4	107.92	2887.7	Super Elite
H113	530	3.0	5.0	1.8	101.32	2681.7	Super Elite
H123	540	6.0	7.0	3.4	108.99	2672.1	Super Elite
H127	530	5.0	5.0	1.8	103.95	2567.7	Super Elite
H128	505	6.0	6.0	2.5	103.95	2456.6	Super Elite
H129	510	4.0	6.0	2.6	105.98	2695.2	Super Elite
<i>Mean:</i>	<i>513.0</i>	<i>4.6</i>	<i>5.1</i>	<i>2.4</i>	<i>101.28</i>	<i>2592.2</i>	





# LE MARTRES

LIMOUSIN STUD

## Objective Measurement Assessment - 10.10.13

Ranked by NEG; CMI:

ID No.	Rank	LWT (kg)	Rib Fat (mm)	Rump Fat (mm)	IMF (%)	EMA (cm <sup>2</sup> )	Carcase Merit Index (Vers.5):
<b>Mature Bulls:</b>							
G137	1	745	4.0	5.0	2.9	129.78	3741.3
H05	2	700	4.0	7.0	3.2	132.59	3598.8
G105	3	725	4.0	6.0	2.4	129.36	3539.3
G124	4	720	4.0	6.0	2.9	123.99	3487.3
G165	5	690	5.0	6.0	3.5	120.44	3361.7
H11	6	695	4.0	5.0	2.4	119.01	3349.1
H12	7	655	5.0	8.0	3.9	126.10	3312.7
G167	8	705	5.0	5.0	3.0	110.88	3191.7
<i>Average:</i>		705	4.5	6.3	3.0	124.73	3419.0

## Objective Measurement Assessment - 9.12.13

Ranked by NEG; CMI:

TAG No.	Rank	LWT (kg)	Rib Fat (mm)	Rump Fat (mm)	IMF (%)	EMA (cm <sup>2</sup> )	Carcase Merit Index, Vers. 5:
<b>Junior Bulls:</b>							
H41	1	495	4.0	4.0	2.3	112.04	2928.4
H110	2	515	4.0	4.0	2.4	107.92	2887.7
H87	3	515	4.0	4.0	2.3	105.34	2816.8
H104	4	500	4.0	4.0	2.1	107.12	2800.8
H91	5	510	4.0	5.0	2.1	105.55	2698.1
H129	6	510	4.0	6.0	2.6	105.98	2695.2
H113	7	530	3.0	5.0	1.8	101.32	2681.7
H123	8	540	6.0	7.0	3.4	108.99	2672.1
H42	9	490	4.0	4.0	2.6	97.81	2654.7
H28	10	505	4.0	5.0	2.4	101.18	2638.5
H94	11	500	4.0	5.0	1.9	103.70	2611.6
H37	12	520	5.0	6.0	2.9	102.80	2601.3
H25	13	520	5.0	5.0	1.9	104.95	2587.1
H95	14	490	5.0	5.0	2.7	101.82	2585.5
H76	15	525	4.0	4.0	2.4	93.20	2584.8
H59	16	520	5.0	6.0	2.8	102.56	2581.6
H90	17	500	4.0	6.0	2.2	103.87	2573.7
H127	18	530	5.0	5.0	1.8	103.95	2567.7
H26	19	525	5.0	5.0	2.2	101.33	2561.0
H45	20	495	4.0	4.0	1.9	97.02	2543.5
H88	21	505	5.0	6.0	2.6	102.49	2525.3
H54	22	505	5.0	5.0	2.4	99.10	2507.8
H19	23	500	5.0	5.0	2.6	97.78	2500.0
H83	24	490	5.0	6.0	2.6	102.11	2491.4
H15	25	505	5.0	5.0	2.5	97.02	2477.2
H84	26	455	4.0	4.0	1.8	97.57	2472.9
H128	27	505	6.0	6.0	2.5	103.95	2456.6
H70	28	505	5.0	5.0	2.7	94.43	2450.3
H22	29	475	5.0	5.0	2.6	97.14	2443.4
H48	30	490	4.0	4.0	2.3	89.91	2439.0
H17	31	490	4.0	5.0	1.9	94.69	2398.9
H105	32	485	4.0	4.0	1.8	91.78	2398.0
H56	33	495	5.0	5.0	2.6	92.94	2386.2
H55	34	500	5.0	5.0	2.3	90.55	2298.9
H52	35	475	4.0	4.0	1.7	88.09	2286.1
H63	36	510	5.0	7.0	2.8	93.45	2280.9
<i>Mean:</i>		513	4.6	5.1	2.4	101.28	2592.2



# LE MARTRES

LIMOUSIN STUD

## Objective Measurement Assessment – 10.10.13

Ranked by NEG; CMI/Age:

TAG No.	Rank	Age: (Months)	Carcase Merit Index (Vers.5):	CMI/Age:
<b>Mature Bulls:</b>				
H05	1	20.5	3598.8	175.4
H11	2	20.7	3349.1	161.4
G137	3	23.4	3741.3	160.1
H12	4	20.7	3312.7	159.7
G165	5	22.2	3361.7	151.7
G124	6	23.0	3487.3	151.5
G105	7	23.7	3539.3	149.1
G167	8	21.5	3191.7	148.4
<i>Average:</i>		22.0	3419.0	157.2

## Objective Measurement Assessment – 9.12.13

Ranked by NEG; CMI/Age:

TAG No.	Rank	Age: (Months)	Carcase Merit Index; Vers. 5:	CMI/Age:
<b>Junior Bulls:</b>				
H41	1	13.7	2928.4	214.1
H110	2	14.6	2887.7	197.8
H87	3	14.3	2816.8	196.5
H104	4	14.3	2800.8	195.4
H113	5	13.8	2681.7	194.2
H129	6	14.1	2695.2	190.6
H94	7	13.9	2611.6	188.2
H42	8	14.1	2654.7	188.2
H28	9	14.1	2638.5	186.6
H91	10	14.5	2698.1	186.1
H95	11	13.9	2585.5	185.9
H76	12	14.0	2584.8	184.6
H123	13	14.6	2672.1	183.5
H59	14	14.1	2581.6	183.0
H25	15	14.2	2587.1	182.2
H54	16	13.8	2507.8	181.6
H90	17	14.3	2573.7	180.4
H128	18	13.7	2456.6	178.8
H88	19	14.1	2525.3	178.6
H127	20	14.4	2567.7	178.3
H37	21	14.6	2601.3	178.2
H84	22	14.0	2472.9	177.0
H22	23	13.8	2443.4	177.0
H83	24	14.1	2491.4	176.6
H26	25	14.5	2561.0	176.6
H45	26	14.4	2543.5	176.2
H48	27	14.1	2439.0	172.9
H19	28	14.5	2500.0	172.8
H70	29	14.3	2450.3	171.3
H105	30	14.0	2398.0	170.8
H52	31	13.4	2286.1	170.0
H17	32	14.2	2398.9	168.5
H15	33	14.7	2477.2	168.2
H56	34	14.5	2386.2	165.0
H55	35	14.0	2298.9	163.8
H63	36	14.3	2280.9	159.1
<b>Mean:</b>		14.2	2592.2	180.5

# EXPLANATORY NOTES FOR CATALOGUE

## **LWT:**

Live weight is measured by weighing the live animal. Results are measured in kilograms.

## **RIB & RUMP FAT:**

Fat Depths are measured by carcass scanning of the live animal. Exterior fat depths are measured on both the 12/13th Rib and P8; Rump sites, and measured in millimetres.

Measures of >3mm and <10mm will be ideal results for Domestic Trade cattle.

## **EMA:**

Eye Muscle Areas are measured by carcass scanning of the live animal. Such areas are measured on the 12/13th Rib site, and measured in square centimetres. Eye Muscle Areas(EMAs) greater than 100 cm sq. for either sex and all ages of cattle, excluding cattle under 6 months, will be a very good result.

## **IMF:**

Intramuscular Fat is measured by carcass scanning of the live animal. IMF is measured on the 12/13th Rib site, and measures the percentage of fat distributed through-out the eye muscle.

Intramuscular Fat(IMF) measures of >2% will be ideal result for Domestic Trade cattle.

## **NEG; CMI:**

The 'Natural Ecosystem Group (NEG); Carcass Merit Index' (CMI) is based upon the Live Weight(LW), Eye Muscle Area(EMA), Fat Depths(FD) and Intramuscular Fat(IMF) of the animals weighed & scanned.

Animals with heavy LW, large EMA, least FD and high IMF are rated highest by the 'NEG; CMI'.

The results are presented in groupings by age, and ranked from highest to lowest.

N.B It will be recommended animals under the age of 24 months be divided into groups with up to a three month spread of age for the purpose of peer group comparisons.

## **NEG; CMI/Mth:**

The 'Natural Ecosystem Group (NEG); Carcass Merit Index' (CMI)/month is a powerful tool for assessing the performance of a live animal, ie. carcass merit relative to age. And, likewise, when comparing a live animal against its peers.

## EXPLANATION OF THE SUFFIXES TO ANIMAL NAMES IN THIS CATALOGUE

Horn Status:	(HP*)	Homozygous Polled by DNA test
	(HP)	Homozygous Polled by progeny test
	(2P)	Homozygous Polled by pedigree
	(P)	Polled
	(S)	Scurred
Colour:	(HB)	Homozygous Black by DNA test
	(2B)	Homozygous Black by pedigree
	(B)	Black
	(R)	Red (not Apricot)
Protoporphyrin Status:	(PN)	Proto Normal
	(PF)	Proto free by pedigree
	(PC)	The animal is a carrier of the abnormal gene for Proto.
	(PS)	Proto suspect (parent of carrier animal)
	(PU)	The animal has not been tested for Proto or have parents which have been tested normal or are free by pedigree.

# EXPLANATORY NOTES FOR CATALOGUE

## F94L – The Limousin Muscle Gene

What are the effects of the Limousin Muscling Gene?

The research conducted by the Adelaide University group led by Dr Wayne Pitchford has clearly documented the effects of the Muscle Gene as shown below.

	Two Copies of the Gene:	Zero Copies of the Gene:	% Difference:
Hot Carcase Weight	390.8 kg	380.2 kg	+3%
Weight of Silverside	11.58 kg	9.76 kg	+19%
Eye Muscle Area	102.0 sq cm	86.1 sq cm	+19%
Retail Beef Yield	73.4%	68.1%	+8%
Shear force of Loin Muscle*	4.06	4.30	-6%
Shear force of Silverside*	3.94	4.43	-11%

Note: (\*) lower shear force indicates more tender beef

How big is the effect if I use a Limousin bull over cows of another breed?

Most Limousin bulls carry two copies of the Limousin Muscle Gene so each of the progeny will get at least one copy of the Gene from the bull.

Animals with one copy are likely to exhibit about half the differences shown above.

A Limousin cross calf is expected to have –

- \* 9.5% more Silverside,
- \* 9.5% larger Eye Muscle Area
- \* 4% more Retail Beef Yield
- \* 3% increase in Tenderness of the Loin Muscle
- \* 5.5% increase in Tenderness of the Silverside.

## F94L Verification

DNA Test. Animals with a DNA Test verification have had a direct analysis of their DNA to confirm they carry 2 copies of the F94L gene.

All bulls in this Sale have had their F94L status verified by DNA Test.

## What is a Limousin bull worth?

A Limousin bull siring 30 calves per year over 5 years.

Realistically these calves – steers & heifers – can make a \$50 premium per head in the market.

Therefore it can be reasoned the bull is worth 30 x 5 x \$50 - \$7,500 MORE to the Buyer!

## CALENDAR OF FUTURE EVENTS

### 2014 -

29th January	Stock & Land Beef Week Open Day	On Property
28th February	Le Martres Limousins Bull Sale	On Property
July	The Land Beef Week Open Day	On Property
23-25th September	Henty Machinery Field Days	On Site



**LOT 15**



**LOT 18**





---

**1** LE MARTRES BLACK GOLLYWOG (AA) (PU)

**Tattoo:** LEMPG137 **Born:** 30/10/2011 **Grade:** Pure **% FB:** 92.59

**Black & Dehorned.**

Birth Weight 35-40 kg.

On 10.10.13 at 23.3 months –  
Liveweight 745 kg,  
Rib Fat 4.0 mm, Rump Fat 5.0 mm,  
Intramuscular Fat (IMF) 2.9%,  
Eye Muscle Area (EMA) 129.78 sq.cm,  
NEG: Carcase Merit Index (CMI) 3741.3 - Super Elite rating!!

F94L DNA Test - 2 copies of Muscle Gene.

Breeding - Purebred Limousin.

MARUNGI NAVARONE (PBTPN324) (P) (B) (PU)  
LE MARTRES SAMPSON (LEMPS66) (P) (B) (PU)  
LE MARTRES PENELOPE (LEMP85) (PU)  
**Sire: LE MARTRES BLACK XTREME (LEMPX27) (P) (B) (PN) (AA)**  
LE MARTRES BLACK REBEL (LEM3Q40) (P) (B) (PN)  
LE MARTRES BLACK ULTIMATE (LEMPU10) (B) (PU)  
LE MARTRES ROXANNE (LEMPQ8) (B) (PU)  
  
LE MARTRES VALENTINO (LEMFV37) (PN)  
LE MARTRES BLACK ANTONIO (LEMPA100) (P) (B) (PN) (AA)  
WHITE LAKES MEANT FOR LOVE (WLPM24) (P) (B) (PU)  
**Dam: LE MARTRES BLACK DAWN (LEMPD62) (B) (PU)**  
UPLANDS URAL (IMBFC21) (PU)  
MOORLIM XMAS BELL (MARPT36) (PU)  
MOORLIM LA BELLE (MARPR39) (PU)

*Purchaser:* ..... \$ .....

---

**2** LE MARTRES BLACK HILTON (AA) (PU)

**Tattoo:** LEM3H5 **Born:** 25/01/2012 **Grade:** Three **% FB:** 89.28

**Black & Dehorned.**

Birth Weight 35-40 kg.

On 10.10.13 at 20.5 months –  
Liveweight 700 kg,  
Rib Fat 4.0 mm, Rump Fat 7.0 mm,  
Intramuscular Fat (IMF) 3.2%,  
Eye Muscle Area (EMA) 132.59 sq.cm,  
NEG: Carcase Merit Index (CMI) 3598.8 - Super Elite rating!!

F94L DNA Test - 2 copies of Muscle Gene.

Breeding - Purebred Limousin.

WHITE LAKES BLACK OPAL (WLPZ7) (P) (B) (PN)  
LE MARTRES BLACK REBEL (LEM3Q40) (P) (B) (PN)  
DOUGLAS Y015 (WJ2Y15) (PU)  
**Sire: LE MARTRES BLACK WORSLEY (LEM3W46) (B) (PN) (AA)**  
MARUNGI PBTPJ28 (PBTPJ28) (P) (PU)  
LE MARTRES NIACIN (LEMPN310) (PU)  
MARUNGI J084 (PBTPJ84) (S) (PU)  
  
LE MARTRES VALENTINO (LEMFV37) (PN)  
LE MARTRES BLACK ANTONIO (LEMPA100) (P) (B) (PN) (AA)  
WHITE LAKES MEANT FOR LOVE (WLPM24) (P) (B) (PU)  
**Dam: LE MARTRES DOVE (LEMPD115) (P) (PU)**  
LE MARTRES BLACK XCALIBRE (LEMPX19) (B) (PN)  
LE MARTRES BLACK AMNITY (LEMPA54) (B) (PU)  
LE MARTRES ROXANNE (LEMPQ8) (B) (PU)

*Purchaser:* ..... \$ .....

---

**3** LE MARTRES BLACK GRANITE (AA) (PU)

**Tattoo:** LEM3G105 **Born:** 19/10/2011 **Grade:** Three **% FB:** 87.50

**Black & Dehorned.**

Birth Weight 35-40 kg.

On 10.10.13 at 23.7 months –  
Liveweight 725 kg,  
Rib Fat 4.0 mm, Rump Fat 6.0 mm,  
Intramuscular Fat (IMF) 2.4%,  
Eye Muscle Area (EMA) 129.36 sq.cm,  
NEG: Carcase Merit Index (CMI) 3539.3 - Super Elite rating!!

F94L DNA Test - 2 copies of Muscle Gene.

Breeding – Purebred Limousin.

FARCEUR (LITTLE LONDON) (IMFFP2588) (PU) (AA)  
LE MARTRES PIERROT (LEMFP41) (PN)  
ARH LIMOUSIN A035 (ARHFA35) (PU)  
**Sire: LE MARTRES ALDRICH (LEMFA48) (PN) (AA)**  
FILOU (IMFFP5133) (PC)  
LE MARTRES NATALIE (LEMFN278) (PU)  
LE MARTRES KAARINA (LEMFK221) (PU)  
  
LE MARTRES ANGUS X203 (LEM0X203) (HP) (PF)  
LE MARTRES A039 (LEM1A39) (B) (PN)  
LE MARTRES XADIS (LEMF26) (PU)  
**Dam: LE MARTRES BLACK DANE (LEM2D127) (B) (PU)**  
LE MARTRES VALENTINO (LEMFV37) (PN)  
LE MARTRES BRETTE (LEMF78) (PU) (AA)  
LE MARTRES XERA (LEMF29) (PU)

*Purchaser:* ..... \$ .....

---

---

**4****LE MARTRES GOULBURN (AA) (PU)****Tattoo:** LEMFG124 **Born:** 10/11/2011 **Grade:** French Pure **% FB:** 100.00**Apricot & Dehorned.**

Birth Weight 35-40 kg.

On 10.10.13 at 23.0 months –  
Liveweight 720 kg,  
Rib Fat 4.0 mm, Rump Fat 6.0 mm,  
Intramuscular Fat (IMF) 2.9%,  
Eye Muscle Area (EMA) 123.99 sq.cm,  
NEG: Carcase Merit Index (CMI) 3487.3 - Super Elite rating!!

F94L DNA Test - 2 copies of Muscle Gene.

Breeding - French Purebred Limousin.

FARCEUR (LITTLE LONDON) (IMFFP2588) (PU) (AA)  
LE MARTRES PIERROT (LEMFP41) (PN)  
ARH LIMOUSIN A035 (ARHFA35) (PU)  
**Sire: LE MARTRES ALDRICH (LEMFA48) (PN) (AA)**  
FILOU (IMFFP5133) (PC)  
LE MARTRES NATALIE (LEMFN278) (PU)  
LE MARTRES KAARINA (LEMFK221) (PU)  
  
LE MARTRES WASHINGTON (LEMF6) (PN)  
LE MARTRES BARON (LEMFB35) (PN) (AA)  
LE MARTRES STEPHANIE (LEMFS40) (PU)  
**Dam: LE MARTRES DURENNE (LEMFD78) (PU)**  
LE MARTRES PIERROT (LEMFP41) (PN)  
LE MARTRES YNSUA (LEMFY14) (PU)  
LE MARTRES TOBACCO (LEMFT49) (PU)*Purchaser:* ..... \$ .....**5****LE MARTRES GIAN (AA) (PF)****Tattoo:** LEM3G165 **Born:** 03/12/2011 **Grade:** Three **% FB:** 89.36**Apricot & Scurred.**

Birth Weight 35-40 kg.

On 10.10.13 at 22.2 months –  
Liveweight 690 kg,  
Rib Fat 5.0 mm, Rump Fat 6.0 mm,  
Intramuscular Fat (IMF) 3.5%,  
Eye Muscle Area (EMA) 120.44 sq.cm,  
NEG: Carcase Merit Index (CMI) 3361.7 - Super Elite rating!!

F94L DNA Test - 2 copies of Muscle Gene.

Protoporphyrin Test - Proto Free by Pedigree.

Breeding - Purebred Limousin.

LE MARTRES BLACK WALMSLEY (LEM3W25) (P) (B) (PN) (AA)  
LE MARTRES ATLAS (LEM3A34) (PU)  
MARUNGI PBT P K 116 (PBTPK116) (PU)  
**Sire: LE MARTRES DALEY (LEM2D9) (P) (PN) (AA)**  
MARUNGI NAVARONE (PBTPN324) (P) (B) (PU)  
LE MARTRES SUCROSE (LEM2S75) (P) (PU)  
LE MARTRES NUTMEG (LEM1N296) (PU)  
  
LE MARTRES WASHINGTON (LEMF6) (PN)  
LE MARTRES BARON (LEMFB35) (PN) (AA)  
LE MARTRES STEPHANIE (LEMFS40) (PU)  
**Dam: LE MARTRES ELAINE (LEMFE66) (PF)**  
LE MARTRES PIERROT (LEMFP41) (PN)  
LE MARTRES AWESOME (LEMFA14) (PF)  
BILATI WILHELMINA (BLTFW401) (PN)*Purchaser:* ..... \$ .....**6****LE MARTRES BLACK HUNTER (AA) (PU)****Tattoo:** LEM3H11 **Born:** 18/01/2012 **Grade:** Three **% FB:** 90.69**Black & Dehorned.**

Birth Weight 35-40 kg.

On 10.10.13 at 20.7 months –  
Liveweight 695 kg,  
Rib Fat 4.0 mm, Rump Fat 5.0 mm,  
Intramuscular Fat (IMF) 2.4%,  
Eye Muscle Area (EMA) 119.01 sq.cm,  
NEG: Carcase Merit Index (CMI) 3349.1 - Super Elite rating!!

F94L DNA Test - 2 copies of Muscle Gene.

Breeding - Purebred Limousin.

WHITE LAKES BLACK OPAL (WLPZ7) (P) (B) (PN)  
LE MARTRES BLACK REBEL (LEM3Q40) (P) (B) (PN)  
DOUGLAS Y015 (WJ2Y15) (PU)  
**Sire: LE MARTRES BLACK WORSLEY (LEM3W46) (B) (PN) (AA)**  
MARUNGI PBTPJ28 (PBTPJ28) (P) (PU)  
LE MARTRES NIACIN (LEMPN310) (PU)  
MARUNGI J084 (PBTPJ84) (S) (PU)  
  
LE MARTRES VALENTINO (LEMFV37) (PN)  
LE MARTRES BLACK ANTONIO (LEMPA100) (P) (B) (PN) (AA)  
WHITE LAKES MEANT FOR LOVE (WLP24) (P) (B) (PU)  
**Dam: LE MARTRES DAMALIS (LEMPD28) (PU)**  
LE MARTRES MOZART (LEMF263) (PU)  
LE MARTRES SANDRA (LEMP5) (PU)  
MARUNGI PBT P K 116 (PBTPK116) (PU)*Purchaser:* ..... \$ .....

---

**7 LE MARTRES BLACK HARLEY (AA) (PU)**

**Tattoo:** LEM2H12 **Born:** 18/01/2012 **Grade:** Two **% FB:** 78.15

**Black & Polled.**

Birth Weight 35-40 kg.

On 10.10.13 at 20.7 months –

Liveweight 655 kg,

Rib Fat 5.0 mm, Rump Fat 8.0 mm,

Intramuscular Fat (IMF) 3.9%,

Eye Muscle Area (EMA) 126.1 sq.cm,

NEG: Carcase Merit Index (CMI) 3312.7 - Super Elite rating!!

F94L DNA Test - 2 copies of Muscle Gene.

Breeding - 3/4 Limousin & 1/4 Angus.

LE MARTRES ANGUS X203 (LEM0X203) (HP) (PF)  
LE MARTRES BLACK BUSBY (LEM1B128) (P) (B) (PN) (AC)  
LE MARTRES ZILLA (LEMPZ44) (PU)

**Sire: LE MARTRES EBEN (LEM2E23) (P) (PN) (AA)**

LE MARTRES WASHINGTON (LEMFW6) (PN)

LE MARTRES CELEST (LEMP55) (PU)

LE MARTRES PETULA (LEM2P73) (PU)

LE MARTRES BLACK REBEL (LEM3Q40) (P) (B) (PN)

LE MARTRES BLACK WALMSLEY (LEM3W25) (P) (B) (PN) (AA)

LE MARTRES RAW DEAL (LEMPR58) (P) (R) (PU) (AA)

**Dam: LE MARTRES BLACK EDLYN (LEMPE41) (P) (B) (PU)**

LE MARTRES WASHINGTON (LEMFW6) (PN)

LE MARTRES BLACK ALPHA (LEMPA92) (P) (B) (PU)

LE MARTRES BLACK WANDA (LEMPW21) (B) (PU)

*Purchaser:* ..... \$ .....

---

**8 LE MARTRES BLACK GLOBAL (AA) (PU)**

**Tattoo:** LEM3G167 **Born:** 26/12/2011 **Grade:** Three **% FB:** 88.72

**Black & Dehorned.**

Birth Weight 35-40 kg.

On 10.10.13 at 21.5 months –

Liveweight 705 kg,

Rib Fat 5.0 mm, Rump Fat 5.0 mm,

Intramuscular Fat (IMF) 3.0%,

Eye Muscle Area (EMA) 110.88 sq.cm,

NEG: Carcase Merit Index (CMI) 3191.7 - Super Elite rating!!

F94L DNA Test - 2 copies of Muscle Gene.

Breeding - Purebred Limousin.

WHITE LAKES BLACK OPAL (WLPZ7) (P) (B) (PN)

LE MARTRES BLACK REBEL (LEM3Q40) (P) (B) (PN)

DOUGLAS Y015 (WJ2Y15) (PU)

**Sire: LE MARTRES BLACK WORSLEY (LEM3W46) (B) (PN) (AA)**

MARUNGI PBTPJ28 (PBTPJ28) (P) (PU)

LE MARTRES NIACIN (LEMPN310) (PU)

MARUNGI J084 (PBTPJ84) (S) (PU)

LE MARTRES SAMPSON (LEMPS66) (P) (B) (PU)

LE MARTRES BLACK XCALIBRE (LEMPX19) (B) (PN)

LE MARTRES SANDRA (LEMP55) (PU)

**Dam: LE MARTRES DAPHNE (LEMPD40) (PU)**

TOPAKI NERO PN147 (TPKPN147) (P) (B) (PN)

LE MARTRES BLACK SHADOW (LEMP57) (P) (B) (PU)

LE MARTRES BLACK PEARL (LEMP29) (P) (B) (PU)

*Purchaser:* ..... \$ .....

---

**9 LE MARTRES BLACK HOLT (AA) (PN)**

**Tattoo:** LEM3H41 **Born:** 19/10/2012 **Grade:** Three **% FB:** 89.32

**Black & Polled.**

Birth Weight 35-40 kg.

On 9.12.13 at 13.6 months –

Liveweight 495 kg,

Rib Fat 4.0 mm, Rump Fat 4.0 mm,

Intramuscular Fat (IMF) 2.3%,

Eye Muscle Area (EMA) 112.04 sq.cm,

NEG: Carcase Merit Index (CMI) 2928.4 - Super Elite rating!!

F94L DNA Test - 2 copies of Muscle Gene.

Protoporphyrin Test - Proto Normal.

Breeding - Purebred Limousin.

LE MARTRES VALENTINO (LEMFV37) (PN)

LE MARTRES BLACK ANTONIO (LEMPA100) (P) (B) (PN) (AA)

WHITE LAKES MEANT FOR LOVE (WLP24) (P) (B) (PU)

**Sire: LIMOGES EL BULLI (LIM3E16) (P) (B) (PN) (AA)**

LE MARTRES MOZART (LEMF263) (PU)

LE MARTRES PETULA (LEM2P73) (PU)

LE MARTRES NUTMEG (LEM1N296) (PU)

FLEURI (IMFFP60) (PU)

LE MARTRES WASHINGTON (LEMFW6) (PN)

TOPAKI ALICE AP2 (TPKFE2) (PU)

**Dam: LE MARTRES ANANEE (LEMPA18) (PU)**

TOPAKI NERO PN147 (TPKPN147) (P) (B) (PN)

LE MARTRES UNDERA (LEMPU40) (PU)

LE MARTRES RED ROBIN (LEMPR50) (R) (PU)

*Purchaser:* ..... \$ .....

---

---

**10****LE MARTRES HANS (AA) (PN)****Tattoo:** LEM2H110 **Born:** 21/09/2012 **Grade:** Two **% FB:** 75.93**Apricot & Dehorned.**

Birth Weight 35-40 kg.

On 9.12.13 at 14.5 months –  
Liveweight 515 kg,  
Rib Fat 4.0 mm, Rump Fat 4.0 mm,  
Intramuscular Fat (IMF) 2.4%,  
Eye Muscle Area (EMA) 107.92 sq.cm,  
NEG: Carcase Merit Index (CMI) 2887.7 - Super Elite rating!!

F94L DNA Test - 2 copies of Muscle Gene.

Protoporphyrin Test - Proto Normal.

Breeding - Purebred Limousin.

LE MARTRES ANGUS X203 (LEM0X203) (HP) (PF)  
LE MARTRES BLACK BUSBY (LEM1B128) (P) (B) (PN) (AC)  
LE MARTRES ZILLA (LEMPZ44) (PU)  
**Sire: LE MARTRES EBEN (LEM2E23) (P) (PN) (AA)**  
LE MARTRES WASHINGTON (LEMFW6) (PN)  
LE MARTRES CELEST (LEMP55) (PU)  
LE MARTRES PETULA (LEM2P73) (PU)LE MARTRES ATLAS (LEM3A34) (PU)  
LE MARTRES DALEY (LEM2D9) (P) (PN) (AA)  
LE MARTRES SUCROSE (LEM2S75) (P) (PU)  
**Dam: LE MARTRES FIFI (LEM2F57) (P) (PU)**  
LE MARTRES WASHINGTON (LEMFW6) (PN)  
LE MARTRES ANANEE (LEMPA18) (PU)  
LE MARTRES UNDERA (LEMPU40) (PU)*Purchaser:* ..... \$ .....

---

**11****LE MARTRES BLACK HERALD (AA) (PN)****Tattoo:** LEM3H87 **Born:** 29/09/2012 **Grade:** Three **% FB:** 90.10**Black & Dehorned.**

Birth Weight 35-40 kg.

On 9.12.13 at 14.3 months –  
Liveweight 515 kg,  
Rib Fat 4.0 mm, Rump Fat 4.0 mm,  
Intramuscular Fat (IMF) 2.3%,  
Eye Muscle Area (EMA) 105.34 sq.cm,  
NEG: Carcase Merit Index (CMI) 2816.8 - Super Elite rating!!

F94L DNA Test - 2 copies of Muscle Gene.

Protoporphyrin Test - Proto Normal.

Breeding - Purebred Limousin.

LE MARTRES VALENTINO (LEMFV37) (PN)  
LE MARTRES BLACK ANTONIO (LEMPA100) (P) (B) (PN) (AA)  
WHITE LAKES MEANT FOR LOVE (WLPM24) (P) (B) (PU)  
**Sire: LIMOGES EL BULLI (LIM3E16) (P) (B) (PN) (AA)**  
LE MARTRES MOZART (LEMF263) (PU)  
LE MARTRES PETULA (LEM2P73) (PU)  
LE MARTRES NUTMEG (LEM1N296) (PU)FLEURI (IMFFP60) (PU)  
LE MARTRES WASHINGTON (LEMFW6) (PN)  
TOPAKI ALICE AP2 (TPKFE2) (PU)  
**Dam: LE MARTRES BLACK ABBA (LEMPA51) (B) (PU)**  
BROOMBEE SCENE STEALER W2 (BRMPW2) (P) (B) (PU)  
NARRABA YOGI (KAGPY3403) (P) (B) (PU)  
WHITE LAKES MEANT FOR LOVE (WLPM24) (P) (B) (PU)*Purchaser:* ..... \$ .....

---

**12****LE MARTRES HARTLEY (AA) (PN)****Tattoo:** LEMFH104 **Born:** 29/09/2012 **Grade:** French Pure **% FB:** 100.00**Apricot & Dehorned.**

Birth Weight 35-40 kg.

On 9.12.13 at 14.3 months –  
Liveweight 500 kg,  
Rib Fat 4.0 mm, Rump Fat 4.0mm,  
Intramuscular Fat (IMF) 2.1%,  
Eye Muscle Area (EMA) 107.12 sq.cm,  
NEG: Carcase Merit Index (CMI) 2800.8 - Super Elite rating!!

F94L DNA Test - 2 copies of Muscle Gene.

Protoporphyrin Test - Proto Normal.

Breeding - French Purebred Limousin.

FLEURI (IMFFP60) (PU)  
LE MARTRES WASHINGTON (LEMFW6) (PN)  
TOPAKI ALICE AP2 (TPKFE2) (PU)  
**Sire: LE MARTRES CHAD (LEMFC90) (PN) (AA)**  
LE MARTRES TRUMAN (LEMFT15) (PU)  
LE MARTRES WALLA (LEMF45) (PU)  
LE MARTRES KAARINA (LEMFK221) (PU)FARCEUR (LITTLE LONDON) (IMFFP2588) (PU) (AA)  
LE MARTRES PIERROT (LEMFP41) (PN)  
ARH LIMOUSIN A035 (ARHFA35) (PU)  
**Dam: LE MARTRES YNSUA (LEMFY14) (PU)**  
LE MARTRES ROADLEY (LEMFQ62) (PU)  
LE MARTRES TOBACCO (LEMFT49) (PU)  
SOUTHEASTERN K030 (SELFK30) (PU)*Purchaser:* ..... \$ .....



---

**13****LE MARTRES HAROD (AA) (PN)****Tattoo:** LEMFH91 **Born:** 24/09/2012 **Grade:** French Pure **% FB:** 100.00**Apricot & Dehorned.**

Birth Weight 35-40 kg.

On 9.12.13 at 14.4 months –  
Liveweight 510 kg,  
Rib Fat 4.0 mm, Rump Fat 5.0 mm,  
Intramuscular Fat (IMF) 2.1%,  
Eye Muscle Area (EMA) 105.55 sq.cm,  
NEG: Carcase Merit Index (CMI) 2698.1 - Super Elite rating!!

F94L DNA Test - 2 copies of Muscle Gene.

Protoporphyrin Test - Proto Normal.

Breeding - French Purebred Limousin.

**Sire:** LE MARTRES CHAD (LEMFC90) (PN) (AA)  
FLEURI (IMFFP60) (PU)  
LE MARTRES WASHINGTON (LEMF6) (PN)  
TOPAKI ALICE AP2 (TPKFE2) (PU)  
LE MARTRES TRUMAN (LEMFT15) (PU)  
LE MARTRES WALLA (LEMF45) (PU)  
LE MARTRES KAARINA (LEMFK221) (PU)**Dam:** NARRABA Y- I'M LUCKY (KAGFY4603) (PU)  
BROADMEADOWS TOMBOLA (IMBFB11) (PN) (AA)  
NARRABA WAIT & SEE (KAGFW305) (PU)  
AZNAVOUR DODO (MACFR1) (PU)  
ARKHADE TITANIC (ARKFT5) (R) (PN) (AA)  
ARKHADE WHOOPEE (ARKFW7) (PU)  
ARKHADE TAPESTRY (ARKFT9) (R) (PU)*Purchaser:* ..... \$ .....

---

**14****LE MARTRES HOLGATE (PN)****Tattoo:** LEM3H129 **Born:** 05/10/2012 **Grade:** Three **% FB:** 93.64**Apricot & Polled.**

Birth Weight 35-40 kg.

On 9.12.13 at 14.1 months –  
Liveweight 510 kg,  
Rib Fat 4.0 mm, Rump Fat 6.0 mm,  
Intramuscular Fat (IMF) 2.6%,  
Eye Muscle Area (EMA) 105.98 sq.cm,  
NEG: Carcase Merit Index (CMI) 2695.2 - Super Elite rating!!

F94L DNA Test - 2 copies of Muscle Gene.

Protoporphyrin Test - Proto Normal.

Breeding - Purebred Limousin.

**Sire:** LE MARTRES EDWIN (LEM3E42) (P) (PN) (AA)  
LE MARTRES BLACK REBEL (LEM3Q40) (P) (B) (PN)  
LE MARTRES BLACK WALMSLEY (LEM3W25) (P) (B) (PN) (AA)  
LE MARTRES RAW DEAL (LEMPR58) (P) (R) (PU) (AA)  
LE MARTRES WASHINGTON (LEMF6) (PN)  
LE MARTRES ATHENA (LEMPA17) (PU)  
LE MARTRES TANGO (LEMP11) (PU)**Dam:** LE MARTRES CELENE (LEMP54) (PU)  
EDMOND CIM58 (IMFFN58) (PN)  
LE MARTRES VALENTINO (LEMFV37) (PN)  
LE MARTRES NATALIE (LEMFN278) (PU)  
LE MARTRES SKIP (LEMP34) (P) (PU)  
LE MARTRES UPRIGHT (LEMPU26) (PU)  
LE MARTRES RAW DEAL (LEMPR58) (P) (R) (PU) (AA)*Purchaser:* ..... \$ .....

---

**15****LE MARTRES HASTINGS (AA) (PN)****Tattoo:** LEMPH113 **Born:** 15/10/2012 **Grade:** Pure **% FB:** 93.36**Apricot & Dehorned.**

Birth Weight 35-40 kg.

On 9.12.13 at 13.8 months –  
Liveweight 530 kg,  
Rib Fat 3.0 mm, Rump Fat 5.0 mm,  
Intramuscular Fat (IMF) 1.8%,  
Eye Muscle Area (EMA) 101.32 sq.cm,  
NEG: Carcase Merit Index (CMI) 2681.7 - Super Elite rating!!

F94L DNA Test - 2 copies of Muscle Gene.

Protoporphyrin Test - Proto Normal.

Breeding - Purebred Limousin.

**Sire:** LE MARTRES DARBY (LEMFD58) (PN) (AA)  
LE MARTRES PIERROT (LEMFP41) (PN)  
LE MARTRES ALDRICH (LEMFA48) (PN) (AA)  
LE MARTRES NATALIE (LEMFN278) (PU)  
LE MARTRES PIERROT (LEMFP41) (PN)  
LE MARTRES TRINITY (LEMFT34) (PU)  
COLLIAN PARK HARMONIA (CPLFH626) (PU)**Dam:** LE MARTRES CELEST (LEMP55) (PU)  
FLEURI (IMFFP60) (PU)  
LE MARTRES WASHINGTON (LEMF6) (PN)  
TOPAKI ALICE AP2 (TPKFE2) (PU)  
LE MARTRES MOZART (LEMFM263) (PU)  
LE MARTRES PETULA (LEM2P73) (PU)  
LE MARTRES NUTMEG (LEM1N296) (PU)*Purchaser:* ..... \$ .....

---

**16****LE MARTRES HERBERT (AC) (PN)****Tattoo:** LEM3H123 **Born:** 22/09/2012 **Grade:** Three **% FB:** 93.51**Apricot & Dehorned.**

Birth Weight 35-40 kg.

On 9.12.13 at 14.5 months –  
Liveweight 540 kg,  
Rib Fat 6.0 mm, Rump Fat 7.0 mm,  
Intramuscular Fat (IMF) 3.4%,  
Eye Muscle Area (EMA) 108.99 sq.cm,  
NEG: Carcase Merit Index (CMI) 2672.1 - Super Elite rating!!

F94L DNA Test - 1 copy of Muscle Gene.

Protoporphyrin Test - Proto Normal.

Breeding - Purebred Limousin.

LE MARTRES BLACK WALMSLEY (LEM3W25) (P) (B) (PN) (AA)  
LE MARTRES ATLAS (LEM3A34) (PU)  
MARUNGI PBT P K 116 (PBTPK116) (PU)  
**Sire: LIMOGES ESUMENT (LIM3E22) (P) (PN) (AC)**  
LE MARTRES PIERROT (LEMFP41) (PN)  
LE MARTRES XHANNY (LEMPX28) (P) (PU)  
LE MARTRES BLACK TAPIOCA (LEMP45) (B) (PU)  
  
FARCEUR (LITTLE LONDON) (IMFFP2588) (PU) (AA)  
LE MARTRES PIERROT (LEMFP41) (PN)  
ARH LIMOUSIN A035 (ARHFA35) (PU)  
**Dam: LE MARTRES ANASTASIA (LEMPA11) (PU)**  
LE MARTRES BLACK PHANTOM (LEM3P42) (B) (PU)  
LE MARTRES BLACK RUSTAVI (LEMPR83) (B) (PU)  
LE MARTRES PAGEANT (LEMP77) (PU)*Purchaser:* ..... \$ .....

---

**17****LE MARTRES HALLIDAY (AA) (PN)****Tattoo:** LEMFH42 **Born:** 06/10/2012 **Grade:** French Pure **% FB:** 100.00**Apricot & Dehorned.**

Birth Weight 35-40 kg.

On 9.12.13 at 14.1 months –  
Liveweight 490 kg,  
Rib Fat 4.0 mm, Rump Fat 4.0 mm,  
Intramuscular Fat (IMF) 2.6%,  
Eye Muscle Area (EMA) 97.81 sq.cm,  
NEG: Carcase Merit Index (CMI) 2654.7 - Super Elite rating!!

F94L DNA Test - 2 copies of Muscle Gene.

Protoporphyrin Test - Proto Normal.

Breeding - French Purebred Limousin.

LE MARTRES PIERROT (LEMFP41) (PN)  
LE MARTRES ALDRICH (LEMFA48) (PN) (AA)  
LE MARTRES NATALIE (LEMFN278) (PU)  
**Sire: LE MARTRES DARBY (LEMFD58) (PN) (AA)**  
LE MARTRES PIERROT (LEMFP41) (PN)  
LE MARTRES TRINITY (LEMFT34) (PU)  
COLLIAN PARK HARMONIA (CPLFH626) (PU)  
  
FLEURI (IMFFP60) (PU)  
LE MARTRES WASHINGTON (LEMFW6) (PN)  
TOPAKI ALICE AP2 (TPKFE2) (PU)  
**Dam: LE MARTRES CUPITT (LEMFC124) (PU)**  
LE MARTRES TRUMAN (LEMFT15) (PU)  
LE MARTRES WITNEY (LEMFW43) (PU)  
LE MARTRES STEPHANIE (LEMFS40) (PU)*Purchaser:* ..... \$ .....

---

**18****LE MARTRES HOGAN (AA) (PN)****Tattoo:** LEM1H28 **Born:** 05/10/2012 **Grade:** One **% FB:** 62.50**Apricot & Dehorned.**

Birth Weight 35-40 kg.

On 9.12.13 at 14.1 months –  
Liveweight 505 kg,  
Rib Fat 4.0 mm, Rump Fat 5.0 mm,  
Intramuscular Fat (IMF) 2.4%,  
Eye Muscle Area (EMA) 101.18 sq.cm,  
NEG: Carcase Merit Index (CMI) 2638.5 - Super Elite rating!!

F94L DNA Test - 2 copies of Muscle Gene.

Protoporphyrin Test - Proto Normal.

Breeding - 3/4 Limousin &amp; 1/4 Angus.

LE MARTRES PIERROT (LEMFP41) (PN)  
LE MARTRES ALDRICH (LEMFA48) (PN) (AA)  
LE MARTRES NATALIE (LEMFN278) (PU)  
**Sire: LE MARTRES ELEAZOR (LEMFE57) (PN) (AA)**  
LE MARTRES WASHINGTON (LEMFW6) (PN)  
LE MARTRES ZILLE (LEMZ43) (PU)  
LE MARTRES RESOLVE (LEMFO68) (PU)  
  
LE MARTRES ANGUS X203 (LEM0X203) (HP) (PF)  
LE MARTRES A039 (LEM1A39) (B) (PN)  
LE MARTRES XADIS (LEMFX26) (PU)  
**Dam: LE MARTRES STRAWBERRY EMILY (LEM0E9) (PU)**  
LE MARTRES BASE DAM S1 (LEM0S1) (PU)*Purchaser:* ..... \$ .....

---

**19** LE MARTRES BLACK HUDSON (AA) (PN)

**Tattoo:** LEMPH94 **Born:** 13/10/2012 **Grade:** Pure **% FB:** 94.44

**Black & Polled.**

Birth Weight 35-40 kg.

On 9.12.13 at 13.8 months –  
Liveweight 500 kg,  
Rib Fat 4.0 mm, Rump Fat 5.0 mm,  
Intramuscular Fat (IMF) 1.9%,  
Eye Muscle Area (EMA) 103.70 sq.cm,  
NEG: Carcase Merit Index (CMI) 2611.6 - Super Elite rating!!

F94L DNA Test - 2 copies of Muscle Gene.

Protoporphyrin Test - Proto Normal.

Breeding - Purebred Limousin.

LE MARTRES VALENTINO (LEMFV37) (PN)  
LE MARTRES BLACK ANTONIO (LEMPA100) (P) (B) (PN) (AA)  
WHITE LAKES MEANT FOR LOVE (WLPM24) (P) (B) (PU)  
**Sire: LE MARTRES BLACK DRAKE (LEMPD89) (P) (B) (PN) (AA)**

LE MARTRES VALENTINO (LEMFV37) (PN)  
LE MARTRES ANABEL (LEMPA63) (PU) (AA)  
ARKHADE FLEUR (ARKPN16) (PU)

MARUNGI NAVARONE (PBTPN324) (P) (B) (PU)  
LE MARTRES SAMPSON (LEMP66) (P) (B) (PU)  
LE MARTRES PENELOPE (LEMP85) (PU)  
**Dam: LE MARTRES BLACK YETTA (LEMPY9) (P) (B) (PU)**  
LE MARTRES PRINCE (LEMP6) (PU)  
LE MARTRES BLACK TARTAN (LEMP12) (B) (PU)  
LE MARTRES BLACK RAPIDS (LEMPR18) (P) (B) (PU)

*Purchaser:* ..... \$ .....

---

**20** LE MARTRES BLACK HANNIBAL (AC) (PN)

**Tattoo:** LEM3H37 **Born:** 21/09/2012 **Grade:** Three **% FB:** 89.84

**Black & Dehorned.**

Birth Weight 35-40 kg.

On 9.12.13 at 14.5 months –  
Liveweight 520 kg,  
Rib Fat 5.0 mm, Rump Fat 6.0 mm,  
Intramuscular Fat (IMF) 2.9%,  
Eye Muscle Area (EMA) 102.80 sq.cm,  
NEG: Carcase Merit Index (CMI) 2601.3 - Super Elite rating!!

F94L DNA Test - 1 copy of Muscle Gene.

Protoporphyrin Test - Proto Normal.

Breeding - Purebred Limousin.

LE MARTRES BLACK WALMSLEY (LEM3W25) (P) (B) (PN) (AA)  
LE MARTRES ATLAS (LEM3A34) (PU)  
MARUNGI PBT P K 116 (PBTPK116) (PU)

**Sire: LIMOGES ESUMENT (LIM3E22) (P) (PN) (AC)**

LE MARTRES PIERROT (LEMP41) (PN)  
LE MARTRES XHANNY (LEMPX28) (P) (PU)  
LE MARTRES BLACK TAPIOCA (LEMP45) (B) (PU)

LE MARTRES BLACK REBEL (LEM3Q40) (P) (B) (PN)  
LE MARTRES BLACK WALMSLEY (LEM3W25) (P) (B) (PN) (AA)  
LE MARTRES RAW DEAL (LEMPR58) (P) (R) (PU) (AA)  
**Dam: LE MARTRES BLACK ZANADU (LEMPZ5) (B) (PU)**  
LE MARTRES BLACK REBEL (LEM3Q40) (P) (B) (PN)  
LE MARTRES BLACK WHISKY (LEMPW34) (B) (PU)  
LE MARTRES SANDRA (LEMP55) (PU)

*Purchaser:* ..... \$ .....

---

**21** LE MARTRES HOWARD (AA) (PN)

**Tattoo:** LEMFH25 **Born:** 03/10/2012 **Grade:** French Pure **% FB:** 100.00

**Apricot & Dehorned.**

Birth Weight 35-40 kg.

On 9.12.12 at 14.2 months –  
Liveweight 520 kg,  
Rib Fat 5.0 mm, Rump Fat 5.0 mm,  
Intramuscular Fat (IMF) 1.9%,  
Eye Muscle Area (EMA) 104.95 sq.cm,  
NEG: Carcase Merit Index (CMI) 2587.1 - Super Elite rating!!

F94L DNA Test - 2 copies of Muscle Gene.

Protoporphyrin Test - Proto Normal.

Breeding - French Purebred Limousin.

LE MARTRES PIERROT (LEMP41) (PN)  
LE MARTRES ALDRICH (LEMFA48) (PN) (AA)  
LE MARTRES NATALIE (LEMFN278) (PU)  
**Sire: LE MARTRES DARBY (LEMPD58) (PN) (AA)**  
LE MARTRES PIERROT (LEMP41) (PN)  
LE MARTRES TRINITY (LEMP34) (PU)  
COLLIAN PARK HARMONIA (CPLFH626) (PU)

FLEURI (IMFFP60) (PU)  
LE MARTRES WASHINGTON (LEMPW6) (PN)  
TOPAKI ALICE AP2 (TPKFE2) (PU)  
**Dam: LE MARTRES ALMOND (LEMPA13) (PU)**  
BROADMEADOWS TOMBOLA (IMBFB11) (PN) (AA)  
NARRABA YIPEE LIFE'S GREAT (KAGFY403) (PU)  
BROOMBEE KATERINA S715 (BRMFS715) (PU)

*Purchaser:* ..... \$ .....

---

---

**22** LE MARTRES BLACK HIGGINS (AA) (PN)

Tattoo: LEM3H95 Born: 12/10/2012 Grade: Three % FB: 94.24

**Black & Dehorned.**

Birth Weight 35-40 kg.

On 9.12.13 at 13.9 months –  
Liveweight 490 kg,  
Rib Fat 5.0 mm, Rump Fat 5.0 mm,  
Intramuscular Fat (IMF) 2.7%,  
Eye Muscle Area (EMA) 101.82 sq.cm,  
NEG: Carcase Merit Index (CMI) 2585.5 - Super Elite rating!!

F94L DNA Test - 2 copies of Muscle Gene.

Protoporphyrin Test - Proto Normal.

Breeding - Purebred Limousin.

LE MARTRES BLACK REBEL (LEM3Q40) (P) (B) (PN)  
LE MARTRES BLACK WALMSLEY (LEM3W25) (P) (B) (PN) (AA)  
LE MARTRES RAW DEAL (LEMPR58) (P) (R) (PU) (AA)  
**Sire: LE MARTRES EDWIN (LEM3E42) (P) (PN) (AA)**  
LE MARTRES WASHINGTON (LEMF6) (PN)  
LE MARTRES ATHENA (LEMPA17) (PU)  
LE MARTRES TANGO (LEMP11) (PU)  
  
SUNDOWNER Y383 (SRFY383) (PU)  
LE MARTRES MOZART (LEMF263) (PU)  
ARH LIMOUSIN A035 (ARHFA35) (PU)  
**Dam: LE MARTRES BLACK WHIST (LEMPW30) (B) (PU)**  
LE MARTRES BLACK PHANTOM (LEM3P42) (B) (PU)  
LE MARTRES BLACK RUSTAVI (LEMPR83) (B) (PU)  
LE MARTRES PAGEANT (LEMP77) (PU)

Purchaser: ..... \$ .....

**23** LE MARTRES HUGHES (AA) (PN)

Tattoo: LEMFH76 Born: 09/10/2012 Grade: French Pure % FB 100.00

**Apricot & Dehorned.**

Birth Weight 35-40 kg.

On 9.12.13 at 14.0 months –  
Liveweight 525 kg,  
Rib Fat 4.0 mm, Rump Fat 4.0 mm,  
Intramuscular Fat (IMF) 2.4%,  
Eye Muscle Area (EMA) 93.20 sq.cm,  
NEG: Carcase Merit Index (CMI) 2584.8 - Super Elite rating!!

F94L DNA Test - 2 copies of Muscle Gene.

Protoporphyrin Test - Proto Normal.

Breeding - French Purebred Limousin.

FLEURI (IMFFP60) (PU)  
LE MARTRES WASHINGTON (LEMF6) (PN)  
TOPAKI ALICE AP2 (TPKFE2) (PU)  
**Sire: LE MARTRES CHAD (LEMFC90) (PN) (AA)**  
LE MARTRES TRUMAN (LEMFT15) (PU)  
LE MARTRES WALLA (LEMF45) (PU)  
LE MARTRES KAARINA (LEMFK221) (PU)  
  
LE MARTRES PIERROT (LEMP41) (PN)  
LE MARTRES ALDRICH (LEMFA48) (PN) (AA)  
LE MARTRES NATALIE (LEMFN278) (PU)  
**Dam: LE MARTRES DANIELLE (LEMFD39) (PU)**  
FELAH (IMFFK56) (PN)  
MULBERRYHILL ROWENA (WDBFR11) (PU)  
MULBERRYHILL MARINA (WDBFN1) (PU)

Purchaser: ..... \$ .....

**24** LE MARTRES HAMBLETON (AA) (PN)

Tattoo: LEM3H59 Born: 06/10/2012 Grade: Three % FB: 85.98

**Apricot & Polled.**

Birth Weight 35-40 kg.

On 9.12.13 at 14.1 months –  
Liveweight 520 kg,  
Rib Fat 5.0 mm, Rump Fat 6.0 mm,  
Intramuscular Fat (IMF) 2.8%,  
Eye Muscle Area (EMA) 102.56 sq.cm,  
NEG: Carcase Merit Index (CMI) 2581.6 - Super Elite rating!!

F94L DNA Test - 2 copies of Muscle Gene.

Protoporphyrin Test - Proto Normal.

Breeding - Purebred Limousin.

LE MARTRES PIERROT (LEMP41) (PN)  
LE MARTRES ALDRICH (LEMFA48) (PN) (AA)  
LE MARTRES NATALIE (LEMFN278) (PU)  
**Sire: LE MARTRES ELEAZOR (LEMFE57) (PN) (AA)**  
LE MARTRES WASHINGTON (LEMF6) (PN)  
LE MARTRES ZILLE (LEMFZ43) (PU)  
LE MARTRES RESOLVE (LEMFQ68) (PU)  
  
LE MARTRES ANGUS X203 (LEM0X203) (HP) (PF)  
LE MARTRES BLACK BUSBY (LEM1B128) (P) (B) (PN) (AC)  
LE MARTRES ZILLA (LEMPZ44) (PU)  
**Dam: LE MARTRES BLACK EBONNY (LEM2E7) (P) (B) (PU)**  
LE MARTRES VALENTINO (LEMFV37) (PN)  
LE MARTRES BRIDGIT (LEMF68) (PU)  
LE MARTRES WALLA (LEMF45) (PU)

Purchaser: ..... \$ .....

---

**25 LE MARTRES BLACK HERROD (AA) (PN)**

**Tattoo:** LEM3H90 **Born:** 01/10/2012 **Grade:** Three **% FB:** 91.65

**Black & Dehorned.**

Birth Weight 35-40 kg.

On 9.12.13 at 14.2 months –  
Liveweight 500 kg,  
Rib Fat 4.0 mm, Rump Fat 6.0 mm,  
Intramuscular Fat (IMF) 2.2%,  
Eye Muscle Area (EMA) 103.87 sq.cm,  
NEG: Carcase Merit Index (CMI) 2573.7 - Super Elite rating!!

F94L DNA Test - 2 copies of Muscle Gene.

Protoporphyrin Test - Proto Normal.

Breeding - Purebred Limousin.

LE MARTRES BLACK REBEL (LEM3Q40) (P) (B) (PN)  
LE MARTRES BLACK WALMSLEY (LEM3W25) (P) (B) (PN) (AA)  
LE MARTRES RAW DEAL (LEMPR58) (P) (R) (PU) (AA)  
**Sire: LE MARTRES EDWIN (LEM3E42) (P) (PN) (AA)**  
LE MARTRES WASHINGTON (LEMFV6) (PN)  
LE MARTRES ATHENA (LEMPA17) (PU)  
LE MARTRES TANGO (LEMP11) (PU)

LE MARTRES VALENTINO (LEMFV37) (PN)  
LE MARTRES BLACK ANTONIO (LEMPA100) (P) (B) (PN) (AA)  
WHITE LAKES MEANT FOR LOVE (WLPM24) (P) (B) (PU)  
**Dam: LE MARTRES BLACK DEIRDRE (LEMPD71) (P) (B) (PU)**  
LE MARTRES BLACK REBEL (LEM3Q40) (P) (B) (PN)  
LE MARTRES BLACK TARA (LEMP156) (P) (B) (PU)  
LE MARTRES NAUTI (LEMPN295) (PU)

*Purchaser:* ..... \$ .....

---

**26 LE MARTRES BLACK HARTFORD (AA) (PN)**

**Tattoo:** LEMPH127 **Born:** 27/09/2012 **Grade:** Pure **% FB:** 97.61

**Black & Polled.**

Birth Weight 35-40 kg.

On 9.12.13 at 14.4 months –  
Liveweight 530 kg,  
Rib Fat 5.0 mm, Rump Fat 5.0 mm,  
Intramuscular Fat (IMF) 1.8%,  
Eye Muscle Area (EMA) 103.95 sq.cm,  
NEG: Carcase Merit Index (CMI) 2567.7 - Super Elite rating!!

F94L DNA Test - 2 copies of Muscle Gene.

Protoporphyrin Test - Proto Normal.

Breeding - Purebred Limousin.

LE MARTRES VALENTINO (LEMFV37) (PN)  
LE MARTRES BLACK ANTONIO (LEMPA100) (P) (B) (PN) (AA)  
WHITE LAKES MEANT FOR LOVE (WLPM24) (P) (B) (PU)  
**Sire: LE MARTRES BLACK DRAKE (LEMPD89) (P) (B) (PN) (AA)**  
LE MARTRES VALENTINO (LEMFV37) (PN)  
LE MARTRES ANABEL (LEMPA63) (PU) (AA)  
ARKHADE FLEUR (ARKPN16) (PU)

FLEURI (IMFFP60) (PU)  
LE MARTRES WASHINGTON (LEMFV6) (PN)  
TOPAKI ALICE AP2 (TPKFE2) (PU)  
**Dam: LE MARTRES BLANCHE (LEMPB46) (PU)**  
LE MARTRES PRINCE (LEMP6) (PU)  
LE MARTRES TANGO (LEMP11) (PU)  
MARUNGI MISSHERCULES (PBTPF30) (PU)

*Purchaser:* ..... \$ .....

---

**27 LE MARTRES HARCOURT (AA) (PN)**

**Tattoo:** LEM3H26 **Born:** 24/09/2012 **Grade:** Three **% FB:** 91.10

**Apricot & Polled.**

Birth Weight 35-40 kg.

On 9.12.13 at 14.4 months –  
Liveweight 525 kg,  
Rib Fat 5.0 mm, Rump Fat 5.0 mm,  
Intramuscular Fat (IMF) 2.2%,  
Eye Muscle Area (EMA) 101.33 sq.cm,  
NEG: Carcase Merit Index (CMI) 2561.0 - Super Elite rating!!

F94L DNA Test - 2 copies of Muscle Gene.

Protoporphyrin Test - Proto Normal.

Breeding - Purebred Limousin.

LE MARTRES BLACK WALMSLEY (LEM3W25) (P) (B) (PN) (AA)  
LE MARTRES ATLAS (LEM3A34) (PU)  
MARUNGI PBT P K 116 (PBTPK116) (PU)  
**Sire: LIMOGES ESUMENT (LIM3E22) (P) (PN) (AC)**  
LE MARTRES PIERROT (LEMP41) (PN)  
LE MARTRES XHANNY (LEMPX28) (P) (PU)  
LE MARTRES BLACK TAPIOCA (LEMP145) (B) (PU)

LE MARTRES SAMPSON (LEMP66) (P) (B) (PU)  
LE MARTRES BLACK XCALIBRE (LEMPX19) (B) (PN)  
LE MARTRES SANDRA (LEMP55) (PU)  
**Dam: LE MARTRES CHARYL (LEMP95) (PU)**  
LE MARTRES BLACK REBEL (LEM3Q40) (P) (B) (PN)  
LE MARTRES BLACK TRIESTE (LEMP153) (P) (B) (PU)  
MARUNGI H065 (PBTPH65) (PU)

*Purchaser:* ..... \$ .....

---



---

**28****LE MARTRES HARRIS (AA) (PN)****Tattoo:** LEM3H45 **Born:** 26/09/2012 **Grade:** Three **% FB:** 93.41**Apricot & Dehorned.**

Birth Weight 35-40 kg.

On 9.12.13 at 14.4 months –  
Liveweight 495 kg,  
Rib Fat 4.0 mm, Rump Fat 4.0 mm,  
Intramuscular Fat (IMF) 1.9%,  
Eye Muscle Area (EMA) 97.02 sq.cm,  
NEG: Carcase Merit Index (CMI) 2543.5 - Super Elite rating!!

F94L DNA Test - 2 copies of Muscle Gene.

Protoporphyrin Test - Proto Normal.

Breeding - Purebred Limousin.

LE MARTRES BLACK REBEL (LEM3Q40) (P) (B) (PN)  
LE MARTRES BLACK WALMSLEY (LEM3W25) (P) (B) (PN) (AA)  
LE MARTRES RAW DEAL (LEMPR58) (P) (R) (PU) (AA)  
**Sire: LE MARTRES EDWIN (LEM3E42) (P) (PN) (AA)**  
LE MARTRES WASHINGTON (LEMFV6) (PN)  
LE MARTRES ATHENA (LEMPA17) (PU)  
LE MARTRES TANGO (LEMP11) (PU)

EDMOND CIM58 (IMFFN58) (PN)  
LE MARTRES VALENTINO (LEMFV37) (PN)  
LE MARTRES NATALIE (LEMFN278) (PU)  
**Dam: LE MARTRES BLYTH (LEMPB55) (PU)**  
LE MARTRES BLACK REBEL (LEM3Q40) (P) (B) (PN)  
LE MARTRES UPWARD (LEMPU53) (P) (PU)  
MARUNGI NOVA (PBTPN320) (P) (PU)

*Purchaser:* ..... \$ .....

---

**29****LE MARTRES HOLDEN (AA) (PN)****Tattoo:** LEM3H88 **Born:** 05/10/2012 **Grade:** Three **% FB:** 87.84**Apricot & Polled.**

Birth Weight 35-40 kg.

On 9.12.13 at 14.1 months –  
Liveweight 505 kg,  
Rib Fat 5.0 mm, Rump Fat 6.0 mm,  
Intramuscular Fat (IMF) 2.6%,  
Eye Muscle Area (EMA) 102.49 sq.cm,  
NEG: Carcase Merit Index (CMI) 2525.3 - Super Elite rating!!

F94L DNA Test - 2 copies of Muscle Gene.

Protoporphyrin Test - Proto Normal.

Breeding - Purebred Limousin.

LE MARTRES VALENTINO (LEMFV37) (PN)  
LE MARTRES BLACK ANTONIO (LEMPA100) (P) (B) (PN) (AA)  
WHITE LAKES MEANT FOR LOVE (WLP24) (P) (B) (PU)  
**Sire: LIMOGES EL BULLI (LIM3E16) (P) (B) (PN) (AA)**  
LE MARTRES MOZART (LEMF263) (PU)  
LE MARTRES PETULA (LEM2P73) (PU)  
LE MARTRES NUTMEG (LEM1N296) (PU)

LE MARTRES BLACK REBEL (LEM3Q40) (P) (B) (PN)  
LE MARTRES BLACK WALMSLEY (LEM3W25) (P) (B) (PN) (AA)  
LE MARTRES RAW DEAL (LEMPR58) (P) (R) (PU) (AA)  
**Dam: LE MARTRES BLACK BO (LEMPB43) (P) (B) (PU)**  
LE MARTRES MOZART (LEMF263) (PU)  
LE MARTRES SYLVIA (LEMP81) (PU)  
LE MARTRES PETITE (LEMP1) (PU)

*Purchaser:* ..... \$ .....

---

**30****LE MARTRES HOWELL (AA) (PN)****Tattoo:** LEMFH54 **Born:** 15/10/2012 **Grade:** French Pure **% FB:** 100.00**Apricot & Dehorned.**

Birth Weight 35-40 kg.

On 9.12.13 at 13.8 months –  
Liveweight 505 kg,  
Rib Fat 5.0 mm, Rump Fat 5.0 mm,  
Intramuscular Fat (IMF) 2.4%,  
Eye Muscle Area (EMA) 99.10 sq.cm,  
NEG: Carcase Merit Index (CMI) 2507.8 - Super Elite rating!!

F94L DNA Test - 2 copies of Muscle Gene.

Protoporphyrin Test - Proto Normal.

Breeding - French Purebred Limousin.

LE MARTRES PIERROT (LEMP41) (PN)  
LE MARTRES ALDRICH (LEMFA48) (PN) (AA)  
LE MARTRES NATALIE (LEMFN278) (PU)  
**Sire: LE MARTRES DARBY (LEMPD58) (PN) (AA)**  
LE MARTRES PIERROT (LEMP41) (PN)  
LE MARTRES TRINITY (LEMFT34) (PU)  
COLLIAN PARK HARMONIA (CPLFH626) (PU)

FLEURI (IMFFP60) (PU)  
LE MARTRES WASHINGTON (LEMFV6) (PN)  
TOPAKI ALICE AP2 (TPKFE2) (PU)  
**Dam: LE MARTRES ZAHRA (LEMFZ14) (PU)**  
LE MARTRES PRINCE (LEMP6) (PU)  
LE MARTRES STEPHANIE (LEMF40) (PU)  
LE MARTRES JAYNELLE (LEMFJ215) (PU)

*Purchaser:* ..... \$ .....

---

**31** LE MARTRES HARMAN (AA) (PN)

Tattoo: LEMPH19 Born: 25/09/2012 Grade: Pure % FB: 88.11

**Apricot & Polled.**

Birth Weight 35-40 kg.

On 9.12.13 at 14.4 months –

Liveweight 500 kg,

Rib Fat 5.0 mm, Rump Fat 5.0 mm,

Intramuscular Fat (IMF) 2.6%,

Eye Muscle Area (EMA) 97.78 sq.cm,

NEG: Carcase Merit Index (CMI) 2500.0 - Super Elite rating!!

F94L DNA Test - 2 copies of Muscle Gene.

Protoporphyrin Test - Proto Normal.

Breeding - Purebred Limousin.

Purchaser: ..... \$ .....

---

**32** LE MARTRES BLACK HARRISON (AA) (PC)

Tattoo: LEM3H83 Born: 06/10/2012 Grade: Three % FB 89.22

**Black & Polled.**

Birth Weight 35-40 kg.

On 9.12.13 at 14.1 months –

Liveweight 490 kg,

Rib Fat 5.0 mm, Rump Fat 6.0 mm,

Intramuscular Fat (IMF) 2.6%,

Eye Muscle Area (EMA) 102.11 sq.cm,

NEG: Carcase Merit Index (CMI) 2491.4 - Super Elite rating!!

F94L DNA Test - 2 copies of Muscle Gene.

Protoporphyrin Test - Proto Carrier.

Breeding - Purebred Limousin.

Purchaser: ..... \$ .....

---

**33** LE MARTRES HALFORD (AA) (PN)

Tattoo: LEMFH15 Born: 17/09/2012 Grade: French Pure % FB: 100.00

**Apricot & Dehorned.**

Birth Weight 35-40 kg.

On 9.12.13 at 14.7 months –

Liveweight 505 kg,

Rib Fat 5.0 mm, Rump Fat 5.0 mm,

Intramuscular Fat (IMF) 2.5%,

Eye Muscle Area (EMA) 97.02 sq.cm,

NEG: Carcase Merit Index (CMI) 2477.2 - Super Elite rating!!

F94L DNA Test - 2 copies of Muscle Gene.

Protoporphyrin Test - Proto Normal.

Breeding – French Purebred Limousin.

Purchaser: ..... \$ .....

MARUNGI NAVARONE (PBTPN324) (P) (B) (PU)  
LE MARTRES SAMPSON (LEMP566) (P) (B) (PU)  
LE MARTRES PENELOPE (LEMP85) (PU)  
**Sire: LE MARTRES BLACK XTREME (LEMPX27) (P) (B) (PN) (AA)**  
LE MARTRES BLACK REBEL (LEM3Q40) (P) (B) (PN)  
LE MARTRES BLACK ULTIMATE (LEMPU10) (B) (PU)  
LE MARTRES ROXANNE (LEMPQ8) (B) (PU)  
  
LE MARTRES BLACK REBEL (LEM3Q40) (P) (B) (PN)  
LE MARTRES BLACK WALMSLEY (LEM3W25) (P) (B) (PN) (AA)  
LE MARTRES RAW DEAL (LEMPR58) (P) (R) (PU) (AA)  
**Dam: LE MARTRES ZILLA (LEMPZ44) (PU)**  
LE MARTRES SAMPSON (LEMP566) (P) (B) (PU)  
LE MARTRES BLACK WINGS (LEMPW40) (P) (B) (PU)  
LE MARTRES ROXANNE (LEMPQ8) (B) (PU)

LE MARTRES VALENTINO (LEMFV37) (PN)  
LE MARTRES BLACK ANTONIO (LEMPA100) (P) (B) (PN) (AA)  
WHITE LAKES MEANT FOR LOVE (WLP24) (P) (B) (PU)  
**Sire: LIMOGES EL BULLI (LIM3E16) (P) (B) (PN) (AA)**  
LE MARTRES MOZART (LEMF263) (PU)  
LE MARTRES PETULA (LEM2P73) (PU)  
LE MARTRES NUTMEG (LEM1N296) (PU)  
  
FLEURI (IMFFP60) (PU)  
LE MARTRES WASHINGTON (LEMF6) (PN)  
TOPAKI ALICE AP2 (TPKFE2) (PU)  
**Dam: LE MARTRES BLACK ANTOINETTE (LEMPA8) (B) (PS)**  
LE MARTRES BLACK REBEL (LEM3Q40) (P) (B) (PN)  
LE MARTRES BLACK TRIESTE (LEMP53) (P) (B) (PU)  
MARUNGI H065 (PBTPH65) (PU)

LE MARTRES PIERROT (LEMP41) (PN)  
LE MARTRES ALDRICH (LEMFA48) (PN) (AA)  
LE MARTRES NATALIE (LEMF278) (PU)  
**Sire: LE MARTRES DARBY (LEMPD58) (PN) (AA)**  
LE MARTRES PIERROT (LEMP41) (PN)  
LE MARTRES TRINITY (LEMFT34) (PU)  
COLLIAN PARK HARMONIA (CPLFH626) (PU)  
  
SUNDOWNER X326 (SRFX326) (PU)  
LE MARTRES TRUMAN (LEMFT15) (PU)  
ARH LIMOUSIN A035 (ARHFA35) (PU)  
**Dam: LE MARTRES WALLA (LEMPW45) (PU)**  
HALTCLIFFE REMBRANDT (IMBFZ20) (PU)  
LE MARTRES KAARINA (LEMPK221) (PU)  
ARH LIMOUSIN A029 (ARHFA29) (PS)

**34**

**LE MARTRES HOPKINS (AA) (PN)**

**Tattoo:** LEM3H84 **Born:** 10/10/2012 **Grade:** Three **% FB:** 82.66

**Apricot & Dehorned.**

Birth Weight 35-40 kg.

On 9.12.13 at 13.9 months –  
Liveweight 455 kg,  
Rib Fat 4.0 mm, Rump Fat 4.0 mm,  
Intramuscular Fat (IMF) 1.8%,  
Eye Muscle Area (EMA) 97.57 sq.cm,  
NEG: Carcase Merit Index (CMI) 2472.9 - Super Elite rating!!

F94L DNA Test - 2 copies of Muscle Gene.

Protoporphyrin Test - Proto Normal.

Breeding - Purebred Limousin.

LE MARTRES ANGUS X203 (LEM0X203) (HP) (PF)  
LE MARTRES BLACK BUSBY (LEM1B128) (P) (B) (PN) (AC)  
LE MARTRES ZILLA (LEMPZ44) (PU)  
**Sire: LE MARTRES EBEN (LEM2E23) (P) (PN) (AA)**  
LE MARTRES WASHINGTON (LEMFW6) (PN)  
LE MARTRES CELEST (LEMP55) (PU)  
LE MARTRES PETULA (LEM2P73) (PU)  
  
LE MARTRES WASHINGTON (LEMFW6) (PN)  
LE MARTRES CHAD (LEMF90) (PN) (AA)  
LE MARTRES WALLA (LEMF45) (PU)  
**Dam: LE MARTRES FEODORA (LEMFF60) (PU)**  
LE MARTRES PIERROT (LEMP41) (PN)  
LE MARTRES YNSUA (LEMF14) (PU)  
LE MARTRES TOBACCO (LEMFT49) (PU)

*Purchaser:* ..... § .....

**35**

**LE MARTRES HYLAND (AA) (PN)**

**Tattoo:** LEM3H128 **Born:** 17/10/2012 **Grade:** Three **% FB:** 93.46

**Apricot & Polled.**

Birth Weight 35-40 kg.

On 9.12.13 at 13.7 months –  
Liveweight 505 kg,  
Rib Fat 6.0 mm, Rump Fat 6.0 mm,  
Intramuscular Fat (IMF) 2.5%,  
Eye Muscle Area (EMA) 103.95 sq.cm,  
NEG: Carcase Merit Index (CMI) 2456.6 - Super Elite rating!!

F94L DNA Test - 2 copies of Muscle Gene.

Protoporphyrin Test - Proto Normal.

Breeding - Purebred Limousin.

LE MARTRES BLACK REBEL (LEM3Q40) (P) (B) (PN)  
LE MARTRES BLACK WALMSLEY (LEM3W25) (P) (B) (PN) (AA)  
LE MARTRES RAW DEAL (LEMPR58) (P) (R) (PU) (AA)  
**Sire: LE MARTRES EDWIN (LEM3E42) (P) (PN) (AA)**  
LE MARTRES WASHINGTON (LEMFW6) (PN)  
LE MARTRES ATHENA (LEMPA17) (PU)  
LE MARTRES TANGO (LEMP11) (PU)  
  
BROADMEADOWS TOMBOLA (IMBFB11) (PN) (AA)  
NARRABA ZENITH REGAL (KAGFZ104) (PU)  
BROOMBEE KATERINA S715 (BRMFS715) (PU)  
**Dam: LE MARTRES CARMEN (LEMP43) (PU)**  
MARUNGI PBTPJ28 (PBTPJ28) (P) (PU)  
LE MARTRES NIACIN (LEMPN310) (PU)  
MARUNGI J084 (PBTPJ84) (S) (PU)

*Purchaser:* ..... § .....

**36**

**LE MARTRES HAYDEN (AA) (PN)**

**Tattoo:** LEM3H70 **Born:** 30/09/2012 **Grade:** Three **% FB:** 92.71

**Apricot & Polled.**

Birth Weight 35-40 kg.

On 9.12.13 at 14.3 months –  
Liveweight 505 kg,  
Rib Fat 5.0 mm, Rump Fat 5.0 mm,  
Intramuscular Fat (IMF) 2.7%,  
Eye Muscle Area (EMA) 94.43 sq.cm,  
NEG: Carcase Merit Index (CMI) 2450.3 - Super Elite rating!!

F94L DNA Test - 2 copies of Muscle Gene.

Protoporphyrin Test - Proto Normal.

Breeding - Purebred Limousin.

LE MARTRES BLACK REBEL (LEM3Q40) (P) (B) (PN)  
LE MARTRES BLACK WALMSLEY (LEM3W25) (P) (B) (PN) (AA)  
LE MARTRES RAW DEAL (LEMPR58) (P) (R) (PU) (AA)  
**Sire: LE MARTRES EDWIN (LEM3E42) (P) (PN) (AA)**  
LE MARTRES WASHINGTON (LEMFW6) (PN)  
LE MARTRES ATHENA (LEMPA17) (PU)  
LE MARTRES TANGO (LEMP11) (PU)  
  
LE MARTRES SAMPSON (LEMP66) (P) (B) (PU)  
LE MARTRES BLACK XCALIBRE (LEMPX19) (B) (PN)  
LE MARTRES SANDRA (LEMP55) (PU)  
**Dam: LE MARTRES CALTHA (LEMP16) (P) (PU)**  
TOPAKI NERO PN147 (TPKPN147) (P) (B) (PN)  
LE MARTRES BLACK VELIKA (LEMPV10) (P) (B) (PU)  
MARUNGI MISS EMAIL (PBTPD13) (PU)

*Purchaser:* ..... § .....

---

**37****LE MARTRES HOLMES (AA) (PN)****Tattoo:** LEM3H22 **Born:** 15/10/2012 **Grade:** Three **% FB:** 88.42**Apricot & Polled.**

Birth Weight 35-40 kg.

On 9.12.13 at 13.8 months –  
Liveweight 475 kg,  
Rib Fat 5.0 mm, Rump Fat 5.0 mm,  
Intramuscular Fat (IMF) 2.6%,  
Eye Muscle Area (EMA) 97.14 sq.cm,  
NEG: Carcase Merit Index (CMI) 2443.4 - Super Elite rating!!

F94L DNA Test - 2 copies of Muscle Gene.

Protoporphyrin Test - Proto Normal.

Breeding - Purebred Limousin.

**Sire:** LIMOGES EL BULLI (LIM3E16) (P) (B) (PN) (AA)  
LE MARTRES VALENTINO (LEMV37) (PN)  
LE MARTRES BLACK ANTONIO (LEMPA100) (P) (B) (PN) (AA)  
WHITE LAKES MEANT FOR LOVE (WLP24) (P) (B) (PU)  
LE MARTRES MOZART (LEMFM263) (PU)  
LE MARTRES PETULA (LEM2P73) (PU)  
LE MARTRES NUTMEG (LEM2N296) (PU)**Dam:** LE MARTRES BATHILDA (LEMPB82) (P) (PU)  
LE MARTRES BLACK REBEL (LEM3Q40) (P) (B) (PN)  
LE MARTRES BLACK WALMSLEY (LEM3W25) (P) (B) (PN) (AA)  
LE MARTRES RAW DEAL (LEMPR58) (P) (R) (PU) (AA)  
LE MARTRES MOZART (LEMFM263) (PU)  
LE MARTRES YOHANA (LEMPY8) (PU)  
LE MARTRES TUSCANY (LEMP9) (PU)*Purchaser:* ..... § .....

---

**38****LE MARTRES HALLOVAN (AA) (PN)****Tattoo:** LEMFH48 **Born:** 06/10/2012 **Grade:** French Pure **% FB:** 100.00**Apricot & Dehorned.**

Birth Weight 35-40 kg.

On 9.12.13 at 14.1 months –  
Liveweight 490 kg,  
Rib Fat 4.0 mm, Rump Fat 4.0 mm,  
Intramuscular Fat (IMF) 2.3%,  
Eye Muscle Area (EMA) 89.91 sq.cm,  
NEG: Carcase Merit Index (CMI) 2439.0 - Super Elite rating!!

F94L DNA Test - 2 copies of Muscle Gene.

Protoporphyrin Test - Proto Normal.

Breeding - French Purebred Limousin.

**Sire:** LE MARTRES CHAD (LEMFC90) (PN) (AA)  
FLEURI (IMFFP60) (PU)  
LE MARTRES WASHINGTON (LEMFW6) (PN)  
TOPAKI ALICE AP2 (TPKFE2) (PU)  
LE MARTRES TRUMAN (LEMFT15) (PU)  
LE MARTRES WALLA (LEMFW45) (PU)  
LE MARTRES KAARINA (LEMFK221) (PU)**Dam:** LE MARTRES EIR (LEMFE64) (PU)  
LE MARTRES PIERROT (LEMFP41) (PN)  
LE MARTRES ALDRICH (LEMFA48) (PN) (AA)  
LE MARTRES NATALIE (LEMFN278) (PU)  
NARRABA WAIT & SEE (KAGFW305) (PU)  
NARRABA Y- I'M LUCKY (KAGFY4603) (PU)  
ARKHADE WHOOPEE (ARKFW7) (PU)*Purchaser:* ..... § .....

---

**39****LE MARTRES HYATT (AA) (PN)****Tattoo:** LEMFH17 **Born:** 02/10/2012 **Grade:** French Pure **% FB:** 100.00**Apricot & Dehorned.**

Birth Weight 35-40 kg.

On 9.12.13 at 14.2 months –  
Liveweight 490 kg,  
Rib Fat 4.0 mm, Rump Fat 5.0 mm,  
Intramuscular Fat (IMF) 1.9%,  
Eye Muscle Area (EMA) 94.69 sq.cm,  
NEG: Carcase Merit Index (CMI) 2398.9 - Super Elite rating!!

F94L DNA Test - 2 copies of Muscle Gene.

Protoporphyrin Test - Proto Normal.

Breeding - French Purebred Limousin.

**Sire:** LE MARTRES CHAD (LEMFC90) (PN) (AA)  
FLEURI (IMFFP60) (PU)  
LE MARTRES WASHINGTON (LEMFW6) (PN)  
TOPAKI ALICE AP2 (TPKFE2) (PU)  
LE MARTRES TRUMAN (LEMFT15) (PU)  
LE MARTRES WALLA (LEMFW45) (PU)  
LE MARTRES KAARINA (LEMFK221) (PU)**Dam:** LE MARTRES CALEDONIA (LEMFC6) (PF)  
EDMOND CIM58 (IMFFN58) (PN)  
LE MARTRES VALENTINO (LEMV37) (PN)  
LE MARTRES NATALIE (LEMFN278) (PU)  
IONESCO (IMFFN206) (PN) (AA)  
BILATI WILHELMINA (BLTFW401) (PN)  
COLLIAN PARK KALINA (CPLFK693) (PU)*Purchaser:* ..... § .....

---

**40****LE MARTRES HAMPTON (AA) (PN)****Tattoo:** LEMFH105 **Born:** 08/10/2012 **Grade:** French Pure **% FB:** 100.00**Apricot & Dehorned.**

Birth Weight 35-40 kg.

On 9.12.13 at 14.0 months –  
Liveweight 485 kg,  
Rib Fat 4.0 mm, Rump Fat 4.0 mm,  
Intramuscular Fat (IMF) 1.8%,  
Eye Muscle Area (EMA) 91.78 sq.cm,  
NEG: Carcase Merit Index (CMI) 2398.0 - Super Elite rating!!

F94L DNA Test - 2 copies of Muscle Gene.

Protoporphyrin Test - Proto Normal.

Breeding - French Purebred Limousin.

LE MARTRES PIERROT (LEMFP41) (PN)  
LE MARTRES ALDRICH (LEMFA48) (PN) (AA)  
LE MARTRES NATALIE (LEMFN278) (PU)  
**Sire: LE MARTRES DARBY (LEMF58) (PN) (AA)**  
LE MARTRES PIERROT (LEMFP41) (PN)  
LE MARTRES TRINITY (LEMFT34) (PU)  
COLLIAN PARK HARMONIA (CPLFH626) (PU)EDMOND CIM58 (IMFFN58) (PN)  
LE MARTRES VALENTINO (LEMFV37) (PN)  
LE MARTRES NATALIE (LEMFN278) (PU)  
**Dam: LE MARTRES YISKA (LEMFY31) (PU)**  
LE MARTRES ROADLEY (LEMFQ62) (PU)  
LE MARTRES UNIFY (LEMFU23) (PU)  
LE MARTRES STEPHANIE (LEMFS40) (PU)*Purchaser:* ..... \$ .....**41****LE MARTRES HAMLET (AA) (PN)****Tattoo:** LEMPH56 **Born:** 25/09/2012 **Grade:** Pure **% FB:** 97.27**Apricot & Polled.**

Birth Weight 35-40 kg.

On 9.12.13 at 14.4 months –  
Liveweight 495 kg,  
Rib Fat 5.0 mm, Rump Fat 5.0 mm,  
Intramuscular Fat (IMF) 2.6%,  
Eye Muscle Area (EMA) 92.94 sq.cm,  
NEG: Carcase Merit Index (CMI) 2386.2 - Super Elite rating!!

F94L DNA Test - 2 copies of Muscle Gene.

Protoporphyrin Test - Proto Normal.

Breeding - Purebred Limousin.

LE MARTRES VALENTINO (LEMFV37) (PN)  
LE MARTRES BLACK ANTONIO (LEMPA100) (P) (B) (PN) (AA)  
WHITE LAKES MEANT FOR LOVE (WLP24) (P) (B) (PU)  
**Sire: LE MARTRES BLACK DRAKE (LEMPD89) (P) (B) (PN) (AA)**  
LE MARTRES VALENTINO (LEMFV37) (PN)  
LE MARTRES ANABEL (LEMPA63) (PU) (AA)  
ARKHADE FLEUR (ARKPN16) (PU)EDMOND CIM58 (IMFFN58) (PN)  
LE MARTRES VALENTINO (LEMFV37) (PN)  
LE MARTRES NATALIE (LEMFN278) (PU)  
**Dam: LE MARTRES BRENNIA (LEMPB71) (PU)**  
LE MARTRES PIERROT (LEMFP41) (PN)  
LE MARTRES XENISE (LEMPX11) (PU)  
LE MARTRES ULTIMATE (LEMPU30) (PU)*Purchaser:* ..... \$ .....**42****LE MARTRES HAWK (AA) (PN)****Tattoo:** LEMFH55 **Born:** 08/10/2012 **Grade:** French Pure **% FB:** 100.00**Apricot & Dehorned.**

Birth Weight 35-40 kg.

On 9.12.13 at 14.0 months –  
Liveweight 500 kg,  
Rib Fat 5.0 mm, Rump Fat 5.0 mm,  
Intramuscular Fat (IMF) 2.3%,  
Eye Muscle Area (EMA) 90.55 sq.cm,  
NEG: Carcase Merit Index (CMI) 2298.9 - Super Elite rating!!

F94L DNA Test - 2 copies of Muscle Gene.

Protoporphyrin Test - Proto Normal.

Breeding - French Purebred Limousin.

LE MARTRES PIERROT (LEMFP41) (PN)  
LE MARTRES ALDRICH (LEMFA48) (PN) (AA)  
LE MARTRES NATALIE (LEMFN278) (PU)  
**Sire: LE MARTRES DARBY (LEMF58) (PN) (AA)**  
LE MARTRES PIERROT (LEMFP41) (PN)  
LE MARTRES TRINITY (LEMFT34) (PU)  
COLLIAN PARK HARMONIA (CPLFH626) (PU)EDMOND CIM58 (IMFFN58) (PN)  
LE MARTRES VALENTINO (LEMFV37) (PN)  
LE MARTRES NATALIE (LEMFN278) (PU)  
**Dam: LE MARTRES BRIDGIT (LEMF68) (PU)**  
LE MARTRES TRUMAN (LEMFT15) (PU)  
LE MARTRES WALLA (LEMF45) (PU)  
LE MARTRES KAARINA (LEMFK221) (PU)*Purchaser:* ..... \$ .....



---

**43****LE MARTRES HILTON (AA) (PN)****Tattoo:** LEMPH52 **Born:** 26/10/2012 **Grade:** Pure **% FB:** 97.61**Apricot & Polled.**

Birth Weight 35-40 kg.

On 9.12.13 at 13.4 months –

Liveweight 475 kg,

Rib Fat 4.0 mm, Rump Fat 4.0 mm,

Intramuscular Fat (IMF) 1.7%,

Eye Muscle Area (EMA) 88.09 sq.cm,

NEG: Carcase Merit Index (CMI) 2286.1 - Super Elite rating!!

F94L DNA Test - 2 copies of Muscle Gene.

Protoporphyrin Test - Proto Normal.

Breeding - Purebred Limousin.

LE MARTRES VALENTINO (LEMFV37) (PN)  
LE MARTRES BLACK ANTONIO (LEMPA100) (P) (B) (PN) (AA)  
WHITE LAKES MEANT FOR LOVE (WLP24) (P) (B) (PU)  
**Sire: LE MARTRES BLACK DRAKE (LEMPD89) (P) (B) (PN) (AA)**  
LE MARTRES VALENTINO (LEMFV37) (PN)  
LE MARTRES ANABEL (LEMPA63) (PU) (AA)  
ARKHADE FLEUR (ARKPN16) (PU)

FLEURI (IMFFP60) (PU)  
LE MARTRES WASHINGTON (LEMFV6) (PN)  
TOPAKI ALICE AP2 (TPKFE2) (PU)  
**Dam: LE MARTRES ANTONIA (LEMPA9) (PU)**  
LE MARTRES MOZART (LEMF263) (PU)  
LE MARTRES PERLE (LEMP34) (PU)  
KENSAL SATIN M251 (KGPM251) (PU)

*Purchaser:* ..... \$ .....

---

**44****LE MARTRES HARPER (AA) (PN)****Tattoo:** LEM3H63 **Born:** 29/09/2012 **Grade:** Three **% FB:** 93.10**Apricot & Polled.**

Birth Weight 35-40 kg.

On 9.12.13 at 14.3 months –

Liveweight 510 kg,

Rib Fat 5.0 mm, Rump Fat 7.0 mm,

Intramuscular Fat (IMF) 2.8%,

Eye Muscle Area (EMA) 93.45 sq.cm,

NEG: Carcase Merit Index (CMI) 2280.9 - Super Elite rating!!

F94L DNA Test - 2 copies of Muscle Gene.

Protoporphyrin Test - Proto Normal.

Breeding - Purebred Limousin.

LE MARTRES BLACK WALMSLEY (LEM3W25) (P) (B) (PN) (AA)  
LE MARTRES ATLAS (LEM3A34) (PU)  
MARUNGI PBT P K 116 (PBTPK116) (PU)  
**Sire: LIMOGES ESUMENT (LIM3E22) (P) (PN) (AC)**  
LE MARTRES PIERROT (LEMF41) (PN)  
LE MARTRES XHANNY (LEMPX28) (P) (PU)  
LE MARTRES BLACK TAPIOCA (LEMP45) (B) (PU)

EDMOND CIM58 (IMFFN58) (PN)  
LE MARTRES VALENTINO (LEMFV37) (PN)  
LE MARTRES NATALIE (LEMFN278) (PU)  
**Dam: LE MARTRES BAMBI (LEMPB28) (P) (PU)**  
WHITE LAKES NO MORE BETS (WLPN38) (PU)  
LE MARTRES RAW DEAL (LEMPR58) (P) (R) (PU) (AA)  
LE MARTRES NEBULITE (LEMPN309) (P) (B) (PU)

*Purchaser:* ..... \$ .....



# LE MARTRES

LIMOUSIN STUD

## Taking Delivery Of Your New Cattle - Bulls

To help your new cattle settle into their new property, the following points may be of assistance.

- \* All Le Martres Limousins cattle have been grazed in large herds all of their lives, so they have always had plenty of companion animals, and never been alone.
- \* It is a good idea to have mature cattle of your own in the stockyards for company for when your new cattle arrive. These cattle will provide company for the new cattle, and encourage them to settle in quicker, and get to know the lay-out of your stockyards/races/paddocks.
- \* At Le Martres Limousins we handle our cattle quietly and confidently, we always show our cattle respect, and our cattle respect us. We generally use motorbikes and dogs to yard the cattle. And, work the cattle on foot and with dogs in the stockyards. The cattle are not familiar with horses.
- \* Handle your new cattle quietly and with respect and they will settle into their new property and herd and will be easy to handle whenever the need arises.

### At Delivery

- \* At Le Martres Limousins we will work with you to ensure your newly purchased cattle are delivered safely, professionally and on time. We highly recommend Mr Joe Wilton as the nominated carrier.

### During The Settling In Period

- \* The majority of cattle have been grazed in a large herd.
- \* Once unloaded, ensure the cattle have mature company and plenty of food and water.
- \* Be aware it is a new environment for the cattle and, sometimes time in the yards with mature company and plenty of food and water may be required.
- \* Do not box up bulls not familiar with each other – the majority of breakdowns/injuries are caused in the bull paddock when new bulls are directly added to an existing group of bulls.
- \* Remember the pecking order scenario with other bulls – the newest addition into a bull paddock may receive a hard time for a while. Perhaps graze bulls in adjoining paddocks for some time before grazing together in the same paddock.
- \* The bull(s) are used to being treated with respect and will respond accordingly to good management.

### At Joining Time

- \* For a young bull(s) arrange a minimal number of cows/heifers to allow the bull(s) to learn to serve and work amongst the herd. Practice makes perfect!!!
- \* Observe the bull(s) closely and regularly at the commencement of a joining period. This ensures you are aware of the bull's ability to serve, and you will get to know their behaviour and manners. Continuing to observe the bull(s) will increase the chances of you noticing if an accident has occurred and/or females in the herd are returning from service. In which case, the bull(s) can be removed and a back up bull(s) placed in the herd.
- \* If using more than one bull in a herd it is advisable to combine a mature with a young bull in a team.
- \* Do not mate bulls with horns and polled/dehorned bulls together. Single mating is preferred.

### After Joining Time

- \* Try and combine younger bulls in the bull paddock, and graze older bulls in a separate herd to avoid injury to the older bulls.
- \* Offer all bulls plenty of food and water in order to recover body weight and regain optimal health and nutrition.

## Le Martres Limousin Semen and Embryos For Sale

### **SEMEN:**

#### **Unlicensed Semen stored at Agrigene's Centre, Wangaratta, Victoria.**

Le Martres Mozart	French Pure	\$50.00 per straw (Packages available)
Le Martres Pierrot	French Pure	\$50.00 per straw (Packages available)
Le Martres Valentino	French Pure	\$50.00 per straw (Packages available)
Le Martres Warwick	French Pure	\$50.00 per straw (Packages available)
Le Martres Washington	French Pure	\$50.00 per straw (Packages available)
Le Martres Chad	French Pure	\$50.00 per straw (Packages available)
Le Martres Darby	French Pure	\$50.00 per straw (Packages available)
Le Martres Delwyn	Aust. Pure (Apr & Horn)	\$50.00 per straw (Packages available)
Le Martres Black Walmsley	Aust. Pure (Blk & Poll)	\$50.00 per straw (Packages available)
Le Martres Black Worsley	Aust. Pure (Blk & Horn)	\$50.00 per straw (Packages available)
Le Martres Black Xcalibre	Aust. Pure (Blk & Horn)	\$50.00 per straw (Packages available)
Le Martres Black Xtreme	Aust. Pure (Blk & Poll)	\$50.00 per straw (Packages available)
Le Martres Black Antonio	Aust. Pure (Blk & Poll)	\$50.00 per straw (Packages available)
Le Martres Black Drake	Aust. Pure (Blk & Poll)	\$50.00 per straw (Packages available)
Sundowner Toro	French Pure	\$50.00 per straw (Packages available)
Sundowner Xavier	French Pure	\$50.00 per straw (Packages available)

#### **Licensed Semen stored at Agrigene's Centre, Wangaratta, Victoria.**

Prices and Availability on application:

Aznavour Charles	Frappeur	Refstrup Tabias
B. Delors	Fripon 1	Shatton Pedro
Black Ox Junior	Goldenview Revamp	Streamville Colin
Burton Ozzy	Hampton Filin	Sundowner Fancy
Daget	Hampton Valiant	Tamis
Earthquake 93,	Harvest Rajah	Tuts Treasure
Email	Hengrave Trooper	Tanhill Premier
Echo	Hvidbjerg Adam	Tanhill Tigre
Esbrouffeur	Labyllé	Tanhill Rumpus
Famous	Leonay Oscar	Tanhill Sogood
Fantastique	Little London Faceur	Tanhalm Claus
Fieldhouse Pilate	Lukas Sandie	White Lakes Black Polled Gamlber
Filou	Marden Umph	White Lakes Yuletide
Fixe	Oakley Sirius	Wilkesly Sampson
Flash	Petard	
Foxtrot	Prince of Paris	

### **EMBRYOS:**

#### **Embryo's stored at Agrigene's Centre, Wangaratta, Victoria.**

Prices and Availability on application:

Selection of French Pure embryo's sired by, Framoire King Blonde Matching Fan Fan Tanhill Rumpus Wintershall Funamble	Selection of Black Polled Australian Pure embryo's by, Lukas Sandie Topaki Nero White Lakes Black Opal
---	---

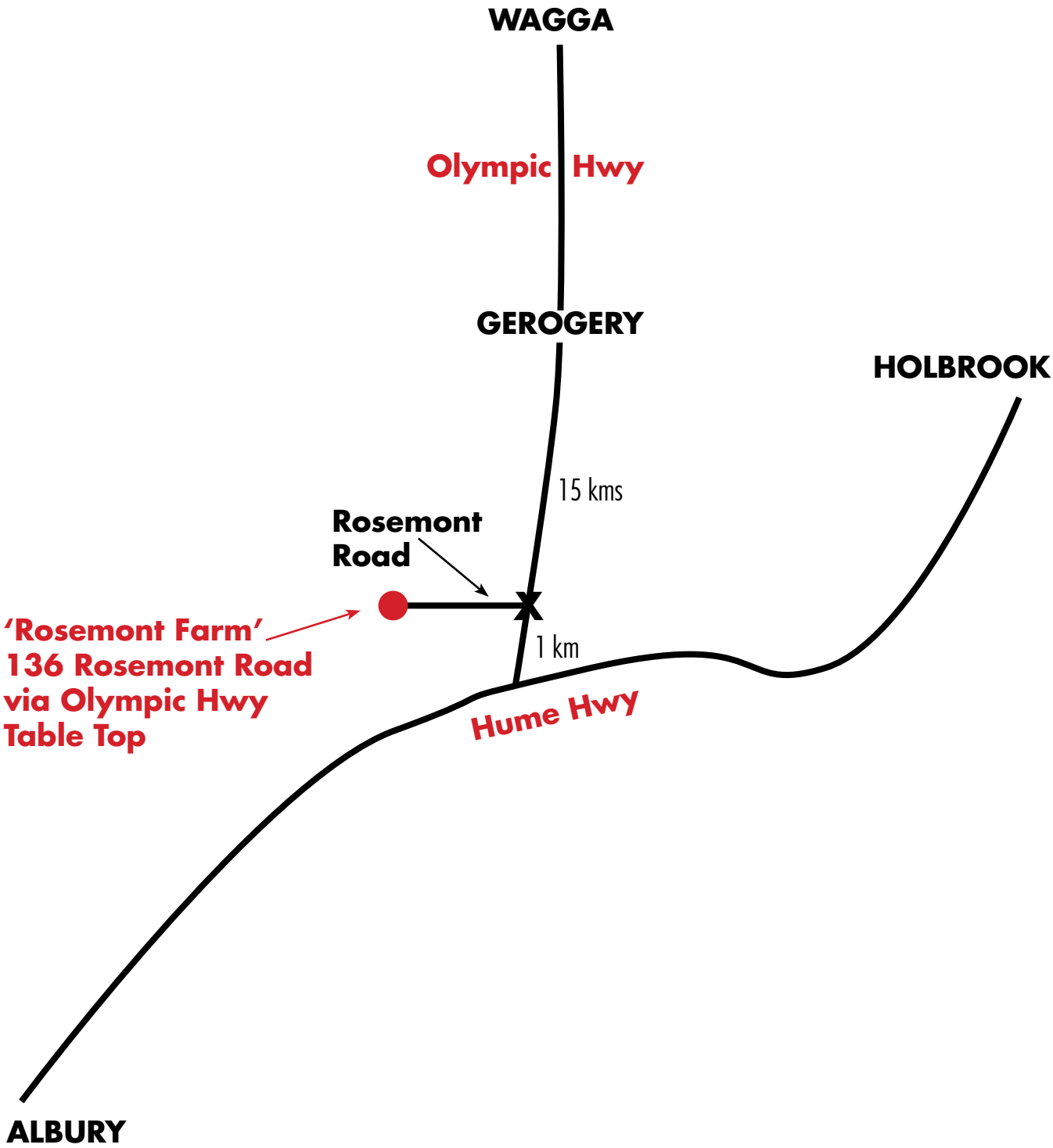
# NOTES

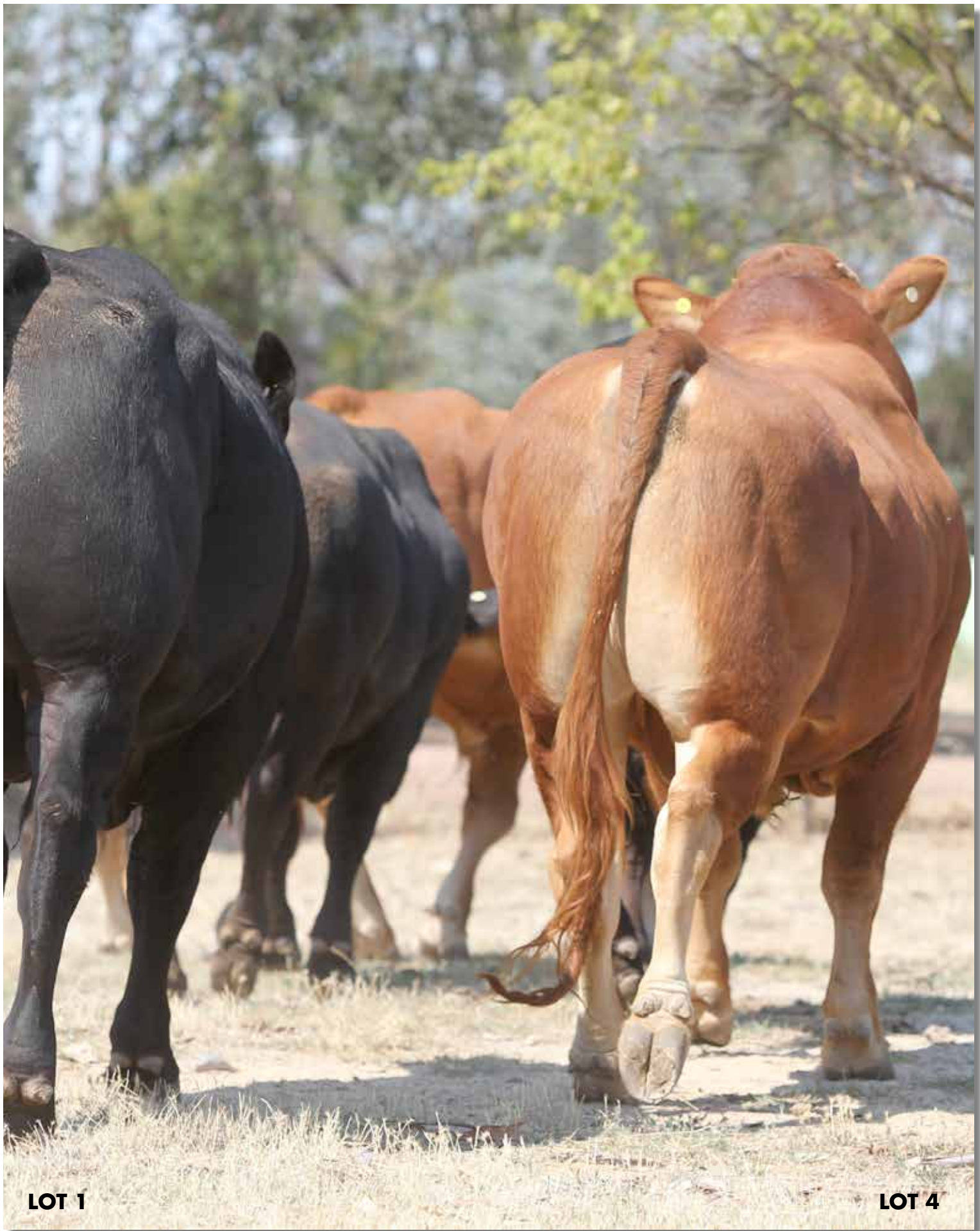
# NOTES

# NOTES



# LOCATION MAP





LOT 1

LOT 4



**LE MARTRES**  
LIMOUSIN STUD